

À des fins de recherche uniquement

# Anticorps Polyclonal de lapin anti-UBE2V1



Numéro de catalogue: 10207-2-AP

## Informations de base

<b>Numéro de catalogue:</b> 10207-2-AP	<b>Numéro d'acquisition GenBank:</b> BC000468	<b>Méthode de purification:</b> Purification par affinité contre l'antigène
<b>Taille:</b> 150ul, Concentration: 600 µg/ml by Nanodrop and 253 µg/ml by Bradford method using BSA as the standard;	<b>Identification du gène (NCBI):</b> 7335	<b>Dilutions recommandées:</b> WB 1:200-1:1000
<b>Hôte:</b> Lapin	<b>Nom complet:</b> ubiquitin-conjugating enzyme E2 variant 1	
<b>Isotype:</b> IgG	<b>MW calculé:</b> 20 kDa	
<b>Immunogen Catalog Number:</b> AG0278	<b>MW observés:</b> 20 kDa	

## Applications

<b>Applications testées:</b> WB, ELISA	<b>Contrôles positifs:</b> WB : tissu splénique humain, cellules BxPC-3
<b>Spécificité de l'espèce:</b> Humain, rat, souris	

## Informations générales

UBE2V1 (Ubiquitin-conjugating enzyme E2 variant 1) is also named as CROC1, UBE2V, UEV1 and belongs to the ubiquitin-conjugating enzyme family. It has no ubiquitin ligase activity on its own and the UBE2V1-UBE2N heterodimer catalyzes the synthesis of non-canonical poly-ubiquitin chains that are linked through Lys-63. CROC1 transcripts in all human tissues examined, with highest levels in brain, skeletal muscle, and kidney (PMID:9305758). It has 5 isoforms produced by alternative splicing.

## Stockage

**Stockage:**  
Stocker à -20°C. Stable pendant un an après l'expédition.  
**Tampon de stockage:**  
PBS avec azoture de sodium à 0,02 % et glycérol à 50 % pH 7,3  
L'aliquotage n'est pas nécessaire pour le stockage à -20C

**\*\*\* Les 20ul contiennent 0,1% de BSA.**

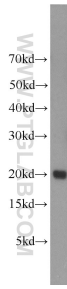
For technical support and original validation data for this product please contact:

T: 1 (888) 4PTGLAB (1-888-478-4522) (toll free in USA), or 1(312) 455-8498 (outside USA)

E: [proteintech@ptglab.com](mailto:proteintech@ptglab.com)  
W: [ptglab.com](http://ptglab.com)

**This product is exclusively available under Proteintech Group brand and is not available to purchase from any other manufacturer.**

## Données de validation sélectionnées



human spleen tissue were subjected to SDS PAGE followed by western blot with 10207-2-AP (UBE2V1 antibody) at dilution of 1:300 incubated at room temperature for 1.5 hours.