

À des fins de recherche uniquement

Anticorps Polyclonal de lapin anti-EFTUD2



Numéro de catalogue: 10208-1-AP

Phare

12 Publications

Informations de base

Numéro de catalogue:
10208-1-AP

Taille:
150ul, Concentration: 300 µg/ml by
Nanodrop and 233 µg/ml by Bradford
method using BSA as the standard;

Hôte:
Lapin

Isotype:
IgG

Immunogen Catalog Number:
AG0279

Numéro d'acquisition GenBank:
BC002360

Identification du gène (NCBI):
9343

Nom complet:
elongation factor Tu GTP binding
domain containing 2

MW calculé
116 kDa

MW observés:
116 kDa

Méthode de purification:
Purification par affinité contre
l'antigène

Dilutions recommandées:
WB 1:500-1:2000
IP 0.5-4.0 ug for IP and 1:500-1:2000
for WB
IF 1:10-1:100

Applications

Applications testées:
IF, IP, WB, ELISA

Demandes citées:
CoIP, IF, IP, PLA, WB

Spécificité de l'espèce:
Humain, rat, souris

Espèces citées:
Humain, souris

Contrôles positifs:

WB : cellules HeLa,
IP : cellules HeLa,
IF : cellules HepG2,

Informations générales

EFTUD2 encodes the 116 kDa U5 small nuclear ribonucleoprotein (snRNP) component, also named SNU114, it has GTP binding activity and is required for pre-mRNA splicing. Evolutionarily conserved human snRNP protein (U5-116kDa) is homologous to the ribosomal elongation factor EF-2 (ribosomal translocase). Defects in EFTUD2 are the cause of mandibulofacial dysostosis with microcephaly (MFDM). So far, acetylation and phosphorylation sites of EFTUD2 have been identified. Catalog# 10208-1-AP is a rabbit polyclonal antibody raised against the N-terminal of human EFTUD2.

Publications notables

Autrice	Pubmed ID	Journal	Application
Zhe Chen	28878014	J Biol Chem	WB,IP
Nam-Kyung Yu	34816099	iScience	PLA,CoIP
Moon Kyoo Jang	25758368	Proteomics	WB

Stockage

Stockage:

Stocker à -20°C. Stable pendant un an après l'expédition.

Tampon de stockage:

PBS avec azoture de sodium à 0,02 % et glycérol à 50 % pH 7,3

L'aliquotage n'est pas nécessaire pour le stockage à -20C

*** Les 20ul contiennent 0,1% de BSA.

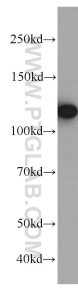
For technical support and original validation data for this product please contact:

T: 1 (888) 4PTGLAB (1-888-478-4522) (toll free
in USA), or 1(312) 455-8498 (outside USA)

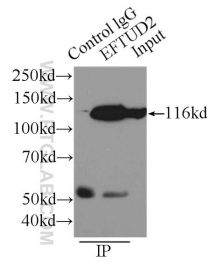
E: proteintech@ptglab.com
W: ptglab.com

This product is exclusively available under Proteintech Group brand and is not available to purchase from any other manufacturer.

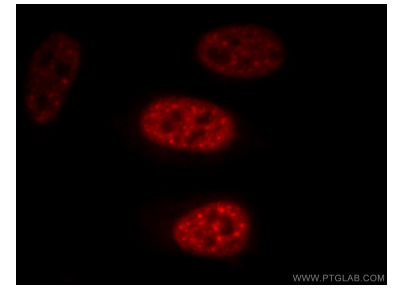
Données de validation sélectionnées



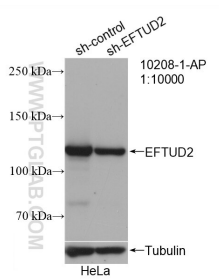
HeLa cells were subjected to SDS PAGE followed by western blot with 10208-1-AP (EFTUD2 antibody) at dilution of 1:1000 incubated at room temperature for 1.5 hours.



IP Result of anti-EFTUD2 (IP:10208-1-AP, 3ug; Detection:10208-1-AP 1:1000) with HeLa cells lysate 4650ug.



Immunofluorescent analysis of HepG2 cells, using EFTUD2 antibody 10208-1-AP at 1:25 dilution and Rhodamine-labeled goat anti-rabbit IgG (red).



WB result of EFTUD2 antibody (10208-1-AP; 1:10000; incubated at room temperature for 1.5 hours) with sh-Control and sh-EFTUD2 transfected HeLa cells.