

À des fins de recherche uniquement

Anticorps Polyclonal de lapin anti-RUVBL1



Numéro de catalogue: 10210-2-AP

Phare

41 Publications

Informations de base

Numéro de catalogue:
10210-2-AP

Taille:
150ul, Concentration: 400 µg/ml by Nanodrop and 227 µg/ml by Bradford method using BSA as the standard;

Hôte:
Lapin

Isotype:
IgG

Immunogen Catalog Number:
AG0281

Numéro d'acquisition GenBank:
BC002993

Identification du gène (NCBI):
8607

Nom complet:
RuvB-like 1 (E. coli)

MW calculé:
456 aa, 50 kDa

MW observés:
50 kDa

Méthode de purification:
Purification par affinité contre l'antigène

Dilutions recommandées:
WB 1:500-1:2000
IP 0.5-4.0 ug for IP and 1:500-1:2000 for WB
IHC 1:50-1:500
IF 1:50-1:500

Applications

Applications testées:
IF, IHC, IP, WB, ELISA

Demandes citées:
CHIP, CoIP, IF, IHC, IP, WB

Spécificité de l'espèce:
Humain, rat, souris

Espèces citées:
bovin, Humain, souris

Remarque-IHC: il est suggéré de démasquer l'antigène avec un tampon de TE buffer pH 9.0; (*) A défaut, le démasquage de l'antigène peut être effectué avec un tampon citrate pH 6,0.

Contrôles positifs:

WB : cellules HEK-293, cellules HeLa, cellules HT-1080, cellules K-562, cellules NIH/3T3, tissu cardiaque de souris, tissu testiculaire de rat

IP : cellules HeLa,

IHC : tissu hépatique de souris, tissu de tumeur ovarienne humain

IF : cellules A431,

Informations générales

RUVBL1 is a member of the AAA (ATPase associated with diverse cellular activities) family of proteins that is associated with several chromatin-remodelling complexes and has important roles in transcriptional regulation, the DNA damage response, telomerase activity, snoRNP assembly, cellular transformation and cancer metastasis[PMID: 21617703]. It consists of 456 amino acids (50 kDa) and interacts with TATA-binding protein (TBP), which is a central component for transcriptional regulation by forming complexes with various transcription regulators. RUVBL1 is a component of a large nuclear protein complex, possibly the RNA polymerase II holoenzyme. RUVBL1 is also highly homologous to RuvB proteins that function as a DNA helicase promote branch migration of the Holliday junction[PMID: 9588198]. This antibody is a rabbit polyclonal antibody to human RUVBL1.

Publications notables

| Autrice | Pubmed ID | Journal | Application |
|------------------|-----------|------------------------|-------------|
| Christian Schutt | 32960481 | EMBO J | WB |
| Tao Chen | 36438486 | Theranostics | WB,IHC |
| Sven Kracker | 25312759 | J Allergy Clin Immunol | WB |

Stockage

Stockage:

Stocker à -20°C. Stable pendant un an après l'expédition.

Tampon de stockage:

PBS avec azoture de sodium à 0,02 % et glycérol à 50 % pH 7,3

L'aliquotage n'est pas nécessaire pour le stockage à -20C

*** Les 20ul contiennent 0,1% de BSA.

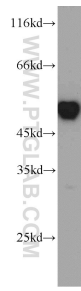
For technical support and original validation data for this product please contact:

T: 1 (888) 4PTGLAB (1-888-478-4522) (toll free in USA), or 1(312) 455-8498 (outside USA)

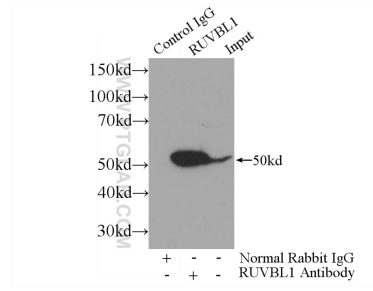
E: proteintech@ptglab.com
W: ptglab.com

This product is exclusively available under Proteintech Group brand and is not available to purchase from any other manufacturer.

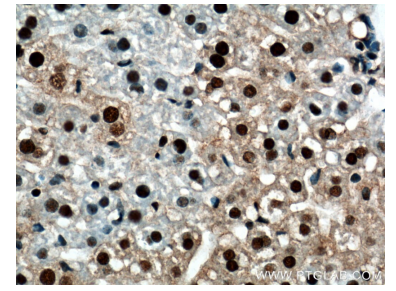
Données de validation sélectionnées



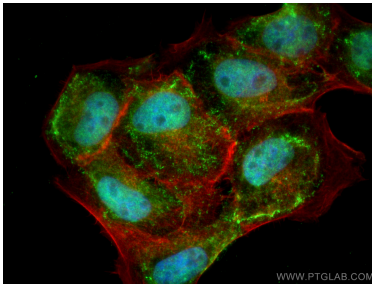
HEK-293 cells were subjected to SDS PAGE followed by western blot with 10210-2-AP (RUVBL1 antibody) at dilution of 1:1000 incubated at room temperature for 1.5 hours.



IP Result of anti-RUVBL1 (IP:10210-2-AP, 3ug; Detection:10210-2-AP 1:1000) with HeLa cells lysate 800ug.



Immunohistochemical analysis of paraffin-embedded mouse liver tissue slide using 10210-2-AP (RUVBL1 Antibody) at dilution of 1:200 (under 40x lens). Heat mediated antigen retrieval with Tris-EDTA buffer (pH 9.0).



Immunofluorescent analysis of (4% PFA) fixed A431 cells using RUVBL1 antibody (10210-2-AP) at dilution of 1:200 and CoralLite@488-Conjugated AffiniPure Goat Anti-Rabbit IgG(H+L), CL594-Phalloidin (red).