

À des fins de recherche uniquement

Anticorps Polyclonal de lapin anti-CDC37



Numéro de catalogue: 10218-1-AP

Phare

11 Publications

Informations de base

Numéro de catalogue:
10218-1-AP

Taille:
150ul, Concentration: 350 µg/ml by Nanodrop and 200 µg/ml by Bradford method using BSA as the standard;

Hôte:
Lapin

Isotype:
IgG

Immunogen Catalog Number:
AG0267

Numéro d'acquisition GenBank:
BC000083

Identification du gène (NCBI):
11140

Nom complet:
cell division cycle 37 homolog (S. cerevisiae)

MW calculé
44 kDa

MW observés:
45-50 kDa

Méthode de purification:
Purification par affinité contre l'antigène

Dilutions recommandées:
WB 1:500-1:2000
IP 0.5-4.0 ug for IP and 1:500-1:2000 for WB
IHC 1:20-1:200
IF 1:20-1:200

Applications

Applications testées:
FC, IF, IHC, IP, WB, ELISA

Demandes citées:
IHC, IP, RIP, WB

Spécificité de l'espèce:
Humain, singe, souris

Espèces citées:
Humain

Remarque-IHC: il est suggéré de démasquer l'antigène avec un tampon de TE buffer pH 9,0; (*) A défaut, 'le démasquage de l'antigène peut être 'effectué avec un tampon citrate pH 6,0.

Contrôles positifs:

WB : cellules HEK-293, cellules A431, cellules COS-7, cellules Jurkat

IP : cellules HEK-293,

IHC : tissu de cancer du côlon humain,

IF : cellules HeLa, cellules A431, cellules HEK-293, cellules MCF-7

Informations générales

Cdc (cell division control) family of proteins are regulatory proteins involved in the processes of cell cycle and proliferation. CDC37, migrated as a protein of 50 kDa in SDS PAGE, is a co-chaperone protein that recruits several immature client kinases to Hsp90 for proper folding. It functions in association with Hsp90, although little is known of its mechanism of action or where it fits into a folding pathway involving other Hsp90 cochaperones. CDC37 up-regulation is a common early event in some localized human cancers. But, the effect of CDC37 dysregulation in human cells is unclear.

Publications notables

Autrice	Pubmed ID	Journal	Application
Jiawei Zhang	35595767	Nat Commun	WB
Qian Zhao	32156008	Int J Mol Sci	WB
Dongrong Zhu	33667688	Pharmacol Res	WB, IP

Stockage

Stockage:
Stocker à -20°C. Stable pendant un an après l'expédition.

Tampon de stockage:
PBS avec azoture de sodium à 0,02 % et glycérol à 50 % pH 7,3
L'aliquotage n'est pas nécessaire pour le stockage à -20C

*** Les 20ul contiennent 0,1% de BSA.

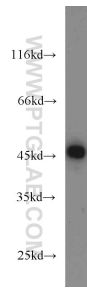
For technical support and original validation data for this product please contact:

T: 1 (888) 4PTGLAB (1-888-478-4522) (toll free in USA), or 1(312) 455-8498 (outside USA)

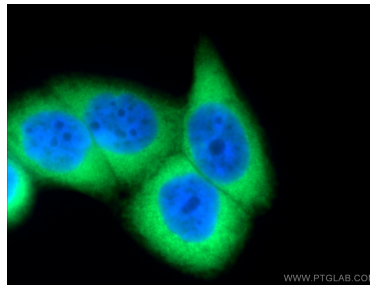
E: proteintech@ptglab.com
W: ptglab.com

This product is exclusively available under Proteintech Group brand and is not available to purchase from any other manufacturer.

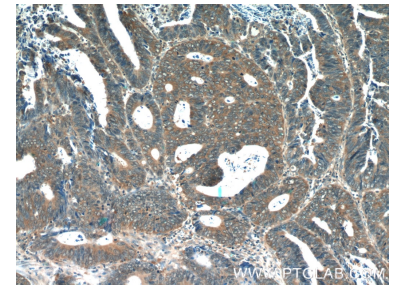
Données de validation sélectionnées



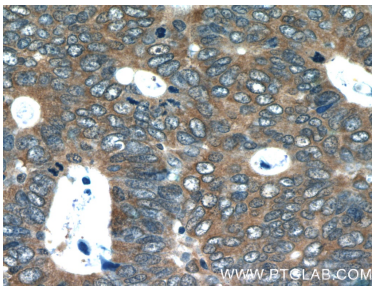
HEK-293 cells were subjected to SDS PAGE followed by western blot with 10218-1-AP (CDC37 antibody) at dilution of 1:1000 incubated at room temperature for 1.5 hours.



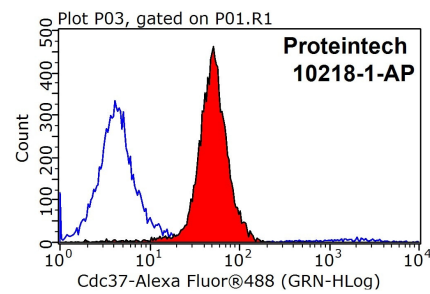
Immunofluorescent analysis of HeLa cells using 10218-1-AP (Cdc37 antibody) at dilution of 1:50 and Alexa Fluor 488-conjugated AffiniPure Goat Anti-Rabbit IgG(H+L).



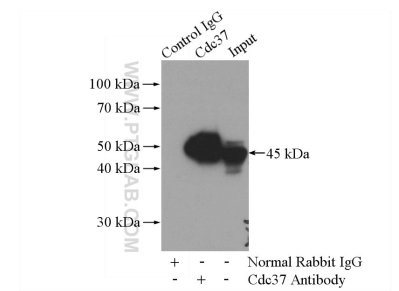
Immunohistochemical analysis of paraffin-embedded human colon cancer tissue slide using 10218-1-AP (CDC37 Antibody) at dilution of 1:50 (under 10x lens).



Immunohistochemical analysis of paraffin-embedded human colon cancer tissue slide using 10218-1-AP (CDC37 Antibody) at dilution of 1:50 (under 40x lens).



1X10⁶ MCF-7 cells were stained with 0.2ug CDC37 antibody (10218-1-AP, red) and control antibody (blue). Fixed with 90% MeOH blocked with 3% BSA (30 min). Alexa Fluor 488-conjugated AffiniPure Goat Anti-Rabbit IgG(H+L) with dilution 1:1000.



IP Result of anti-CDC37 (IP:10218-1-AP, 4ug; Detection:10218-1-AP 1:1000) with HEK-293 cells lysate 3200ug.