

À des fins de recherche uniquement

Anticorps Polyclonal de lapin anti-PDLIM7



Numéro de catalogue: 10221-1-AP

Phare

12 Publications

Informations de base

Numéro de catalogue:
10221-1-AP

Taille:
150ul, Concentration: 800 µg/ml by Nanodrop and 400 µg/ml by Bradford method using BSA as the standard;

Hôte:
Lapin

Isotype:
IgG

Immunogen Catalog Number:
AG0264

Numéro d'acquisition GenBank:
BC001093

Identification du gène (NCBI):
9260

Nom complet:
PDZ and LIM domain 7 (enigma)

MW calculé
55/60 kDa

MW observés:
55 kDa

Méthode de purification:
Purification par affinité contre l'antigène

Dilutions recommandées:
WB 1:1000-1:4000
IHC 1:20-1:200
IF 1:20-1:200

Applications

Applications testées:
IF, IHC, IP, WB, ELISA

Demandes citées:
IF, IHC, IP, WB

Spécificité de l'espèce:
Humain

Espèces citées:
Humain, souris

Remarque-IHC: il est suggéré de démasquer l'antigène avec un tampon de TE buffer pH 9,0; (*) A défaut, 'le démasquage de l'antigène peut être effectué avec un tampon citrate pH 6,0.

Contrôles positifs:

WB : cellules SKOV-3, cellules HeLa, cellules MCF-7

IHC : tissu de tumeur ovarienne humain,

IF : cellules SKOV-3,

Informations générales

PDLIM7 (PDZ and LIM domain protein 7), also known as ENIGMA or LIM mineralization protein 1 (LMP-1), is a member of PDZ-LIM proteins which function as scaffold to interact with multiple proteins through N-terminal PDZ domain and C-terminal LIM domain. Its LIM domains bind to proteins involved in mitogenic signaling, and it plays a role in tumorigenesis by promoting cancer cell invasion and metastasis. In addition, PDLIM7 is an essential positive regulator of osteoblast differentiation and maturation and bone formation.

Publications notables

Autrice	Pubmed ID	Journal	Application
Michael D Healy	36302387	Structure	WB
Hui Liu	25336289	J Orthop Res	WB
Aron Gyuris	31242427	Cell Rep	WB

Stockage

Stockage:

Stocker à -20°C. Stable pendant un an après l'expédition.

Tampon de stockage:

PBS avec azoture de sodium à 0,02 % et glycérol à 50 % pH 7,3

L'aliquotage n'est pas nécessaire pour le stockage à -20C

*** Les 20ul contiennent 0,1% de BSA.

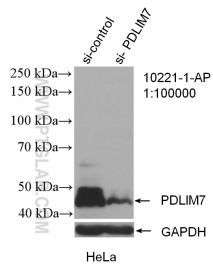
For technical support and original validation data for this product please contact:

T: 1 (888) 4PTGLAB (1-888-478-4522) (toll free in USA), or 1(312) 455-8498 (outside USA)

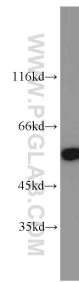
E: proteintech@ptglab.com
W: ptglab.com

This product is exclusively available under Proteintech Group brand and is not available to purchase from any other manufacturer.

Données de validation sélectionnées

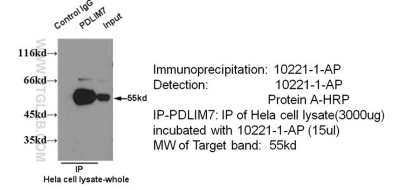


WB result of PDLIM7 antibody (10221-1-AP; 1:100000; incubated at room temperature for 1.5 hours) with sh-Control and sh-PDLIM7 transfected HeLa cells.

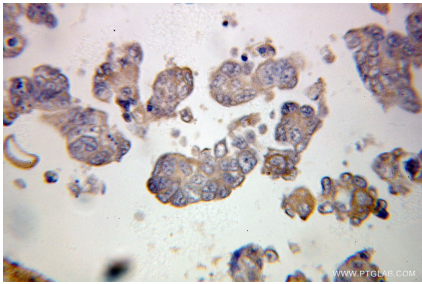


SKOV-3 cells were subjected to SDS PAGE followed by western blot with 10221-1-AP (PDLIM7 antibody) at dilution of 1:2000 incubated at room temperature for 1.5 hours.

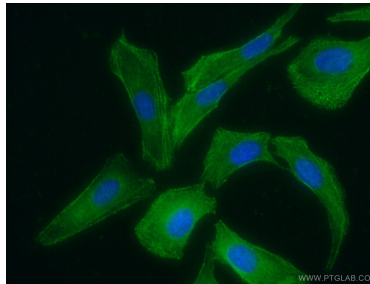
IP & WB of 10221-1-AP with HeLa cell



IP result of PDLIM7 antibody (10221-1-AP for IP and Detection) with HeLa cell lysate.



Immunohistochemical analysis of paraffin-embedded human ovary tumor using 10221-1-AP (PDLIM7 antibody) at dilution of 1:100 (under 25x lens).



Immunofluorescent analysis of (-20°C Ethanol) fixed SKOV-3 cells using 10221-1-AP (PDLIM7 antibody) at dilution of 1:50 and Alexa Fluor 488-conjugated AffiniPure Goat Anti-Rabbit IgG(H+L).