

À des fins de recherche uniquement

Anticorps Polyclonal de lapin anti-Sam68



Numéro de catalogue: 10222-1-AP

7 Publications

Informations de base

Numéro de catalogue:

10222-1-AP

Taille:

150ul, Concentration: 450 µg/ml by Nanodrop;

Hôte:

Lapin

Isotype:

IgG

Immunogen Catalog Number:

AG0235

Numéro d'acquisition GenBank:

BC000717

Identification du gène (NCBI):

10657

Nom complet:

KH domain containing, RNA binding, signal transduction associated 1

MW calculé

48 kDa

MW observés:

68 kDa

Méthode de purification:

Purification par affinité contre l'antigène

Dilutions recommandées:

WB 1:1000-1:4000

IP 0.5-4.0 ug for IP and 1:500-1:2000 for WB

IHC 1:20-1:200

IF 1:50-1:500

Applications

Applications testées:

FC, IF, IHC, IP, WB, ELISA

Demandes citées:

CoIP, IHC, RIP, WB

Spécificité de l'espèce:

Humain, rat, souris

Espèces citées:

Humain, souris

Contrôles positifs:

WB : cellules HT-29, cellules HEK-293, cellules HeLa, cellules NIH/3T3, tissu cérébral de rat, tissu cérébral de souris

IP : cellules HeLa,

IHC : tissu de cancer du sein humain,

IF : tissu cérébral de souris,

Remarque-IHC: il est suggéré de démasquer l'antigène avec un tampon de TE buffer pH 9,0; (*) À défaut, le démasquage de l'antigène peut être effectué avec un tampon citrate pH 6,0.

Informations générales

KHDRBS1, also named as SAM68, p62 and p68, belongs to the KHDRBS family. It is recruited and tyrosine phosphorylated by several receptor systems, for example the T-cell, leptin and INS receptors. Once phosphorylated, KHDRBS1 functions as an adapter protein in signal transduction cascades by binding to SH2 and SH3 domain-containing proteins. It represses CBP-dependent transcriptional activation apparently by competing with other nuclear factors for binding to CBP. KHDRBS1 also acts as a putative regulator of mRNA stability and/or translation rates and mediates mRNA nuclear export. KHDRBS1 has three isoforms with calculated MW of 44-48kD. For isoform with a calculated MW of 48.2 kD, it migrated as a 68kD protein on SDS-PAGE gels [PMID: 10564820]. This is a rabbit polyclonal antibody raised against residues near the N terminus of human KHDRBS1.

Publications notables

Autrice	Pubmed ID	Journal	Application
Xin Yu	36247240	Am J Transl Res	IHC, WB
Song Zhu	33537092	Theranostics	IHC
Cira Dansokho	26912648	Brain	IHC

Stockage

Stockage:

Stocker à -20°C. Stable pendant un an après l'expédition.

Tampon de stockage:

PBS avec azoture de sodium à 0,02 % et glycérol à 50 % pH 7,3

L'aliquotage n'est pas nécessaire pour le stockage à -20C

*** Les 20ul contiennent 0,1% de BSA.

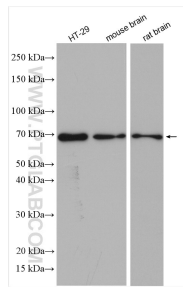
For technical support and original validation data for this product please contact:

T: 1 (888) 4PTGLAB (1-888-478-4522) (toll free in USA), or 1(312) 455-8498 (outside USA)

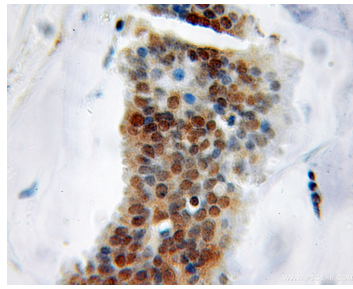
E: proteintech@ptglab.com
W: ptglab.com

This product is exclusively available under Proteintech Group brand and is not available to purchase from any other manufacturer.

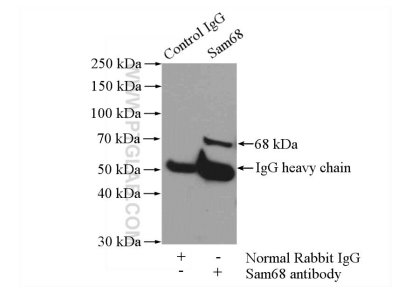
Données de validation sélectionnées



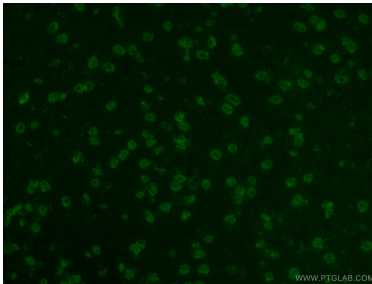
Various lysates were subjected to SDS PAGE followed by western blot with 10222-1-AP (Sam68 antibody) at dilution of 1:2000 incubated at room temperature for 1.5 hours.



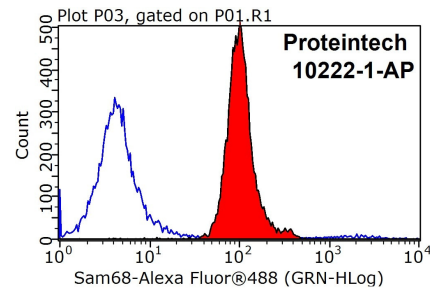
Immunohistochemical analysis of paraffin-embedded human breast cancer using 10222-1-AP (KHDRBS1 antibody) at dilution of 1:50 (under 10x lens).



IP Result of anti-Sam68 (IP:10222-1-AP, 4ug; Detection:10222-1-AP 1:1000) with HeLa cells lysate 1200ug.



Immunofluorescent analysis of (4% PFA) fixed mouse brain tissue using 10222-1-AP (Sam68 antibody) at dilution of 1:50 and Alexa Fluor 488-conjugated AffiniPure Goat Anti-Rabbit IgG(H+L).



1X10⁶ MCF-7 cells were stained with 0.2ug Sam68 antibody (10222-1-AP, red) and control antibody (blue). Fixed with 90% MeOH blocked with 3% BSA (30 min). Alexa Fluor 488-conjugated AffiniPure Goat Anti-Rabbit IgG(H+L) with dilution 1:1000.