

À des fins de recherche uniquement

Anticorps Polyclonal de lapin anti-EIF2S2



Numéro de catalogue: 10227-1-AP

Phare

5 Publications

Informations de base

Numéro de catalogue:
10227-1-AP

Taille:
150ul, Concentration: 700 µg/ml by
Nanodrop;

Hôte:
Lapin

Isotype:
IgG

Immunogen Catalog Number:
AG0269

Numéro d'acquisition GenBank:
BC000461

Identification du gène (NCBI):
8894

Nom complet:
eukaryotic translation initiation
factor 2, subunit 2 beta, 38kDa

MW calculé
38 kDa

MW observés:
50 kDa

Méthode de purification:
Purification par affinité contre
l'antigène

Dilutions recommandées:
WB 1:5000-1:50000
IP 0.5-4.0 ug for IP and 1:500-1:2000
for WB
IHC 1:20-1:200
IF 1:10-1:100

Applications

Applications testées:
IF, IHC, IP, WB, ELISA

Demandes citées:
WB

Spécificité de l'espèce:
Humain, rat, souris

Espèces citées:
Humain, souris

Remarque-IHC: il est suggéré de démasquer l'antigène avec un tampon de TE buffer pH 9.0; (*) À défaut, le démasquage de l'antigène peut être effectué avec un tampon citrate pH 6.0.

Contrôles positifs:

WB : cellules HEK-293T, cellules C6, cellules HeLa, cellules HepG2, cellules Jurkat, cellules L02, cellules NIH/3T3, cellules PC-3, tissu hépatique de rat, tissu hépatique de souris, tissu testiculaire de souris

IP : tissu hépatique de souris,

IHC : tissu testiculaire humain, tissu hépatique humain

IF : cellules HepG2, cellules L02

Informations générales

Eukaryotic translation initiation factor 2 (eIF2) is composed of three subunits, eIF2 alpha, eIF2 beta (EIF2S2), and eIF2 gamma, which are present in equal molar amounts. eIF2 beta plays a central role in the maintenance of what is generally considered a rate-limiting step in mRNA translation. In the early steps of protein synthesis, eIF2 beta binds GTP and Met-tRNA and transfers Met-tRNA to the 40S ribosomal subunit. At the end of the initiation process, GTP bound to eIF2 beta is hydrolyzed to GDP and the eIF2/GDP complex is released from the ribosome. The exchange of GDP bound to eIF2 beta for GTP is a prerequisite to binding Met-tRNA and is mediated by eIF2 beta, which recycles the eIF2 complex for another round of initiation.

Publications notables

Autrice	Pubmed ID	Journal	Application
Genee Y Lee	24755469	Cancer Res	WB
Matthias Kroiss	19690462	Fly (Austin)	WB
M Fittschen	25721894	Neurogenetics	WB

Stockage

Stockage:

Stocker à -20°C. Stable pendant un an après l'expédition.

Tampon de stockage:

PBS avec azoture de sodium à 0,02 % et glycérol à 50 % pH 7,3

L'aliquotage n'est pas nécessaire pour le stockage à -20C

*** Les 20ul contiennent 0,1% de BSA.

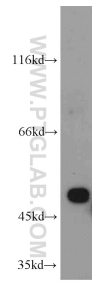
For technical support and original validation data for this product please contact:

T: 1 (888) 4PTGLAB (1-888-478-4522) (toll free in USA), or 1(312) 455-8498 (outside USA)

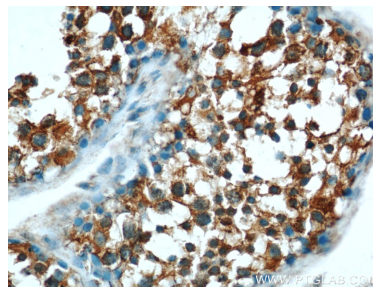
E: proteintech@ptglab.com
W: ptglab.com

This product is exclusively available under Proteintech Group brand and is not available to purchase from any other manufacturer.

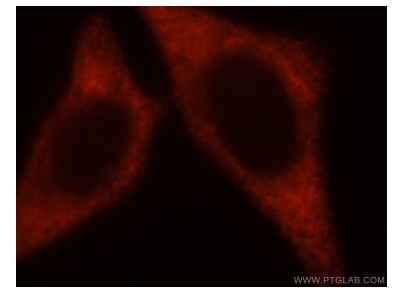
Données de validation sélectionnées



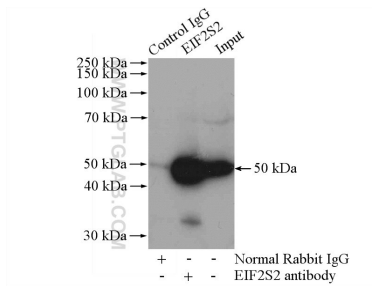
mouse liver tissue were subjected to SDS PAGE followed by western blot with 10227-1-AP (EIF2S2 antibody) at dilution of 1:1000 incubated at room temperature for 1.5 hours.



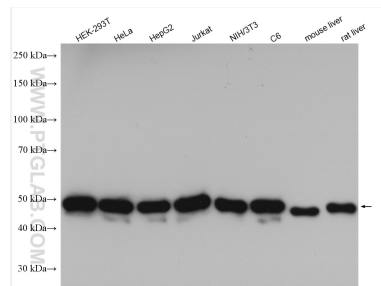
Immunohistochemical analysis of paraffin-embedded human testis using 10227-1-AP (EIF2S2 antibody) at dilution of 1:50 (under 40x lens).



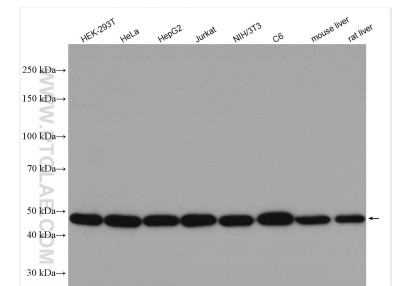
Immunofluorescent analysis of HepG2 cells, using EIF2S2 antibody 10227-1-AP at 1:25 dilution and Rhodamine-labeled goat anti-rabbit IgG (red).



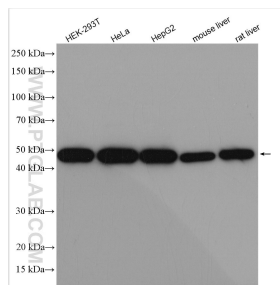
IP Result of anti-EIF2S2 (IP:10227-1-AP, 4ug; Detection:10227-1-AP 1:1000) with mouse liver tissue lysate 4000ug.



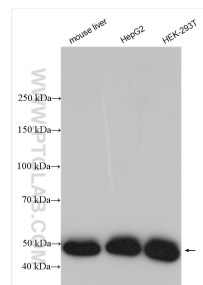
Various lysates were subjected to SDS PAGE followed by western blot with 10227-1-AP (EIF2S2 antibody) at dilution of 1:10000 incubated at room temperature for 1.5 hours.



Various lysates were subjected to SDS PAGE followed by western blot with 10227-1-AP (EIF2S2 antibody) at dilution of 1:10000 incubated at room temperature for 1.5 hours.



HEK-293T cells were subjected to SDS PAGE followed by western blot with 10227-1-AP (EIF2S2 antibody) at dilution of 1:10000 incubated at room temperature for 1.5 hours.



Various lysates were subjected to SDS PAGE followed by western blot with 10227-1-AP (EIF2S2 antibody) at dilution of 1:8000 incubated at room temperature for 1.5 hours.