

À des fins de recherche uniquement

Anticorps Polyclonal de lapin anti-nucleobindin 1



Numéro de catalogue: 10228-1-AP

1 Publications

Informations de base

Numéro de catalogue:
10228-1-AP

Taille:
150ul, Concentration: 600 µg/ml by Nanodrop and 353 µg/ml by Bradford method using BSA as the standard;

Hôte:
Lapin

Isotype:
IgG

Immunogen Catalog Number:
AG0290

Numéro d'acquisition GenBank:
BC002356

Identification du gène (NCBI):
4924

Nom complet:
nucleobindin 1

MW calculé
55 kDa

MW observés:
63 kDa

Méthode de purification:
Purification par affinité contre l'antigène

Dilutions recommandées:
WB 1:500-1:1000
IP 0.5-4.0 ug for IP and 1:500-1:2000 for WB
IHC 1:50-1:500
IF 1:50-1:500

Applications

Applications testées:
FC, IF, IHC, IP, WB, ELISA

Demandes citées:
WB

Spécificité de l'espèce:
Humain, souris

Espèces citées:
souris

Remarque-IHC: il est suggéré de démasquer l'antigène avec un tampon de TE buffer pH 9,0; (*) A défaut, 'le démasquage de l'antigène peut être 'effectué avec un tampon citrate pH 6,0.

Contrôles positifs:

WB : cellules MCF7, cellules A431, cellules HeLa, cellules HepG2

IP : cellules HepG2,

IHC : tissu cérébral humain,

IF : cellules HepG2, tissu cérébral de souris

Informations générales

Nucleobindin-1 (NUCB1), also known as Calnuc, is a highly conserved, multifunctional protein widely expressed in tissues and cells. It has been proposed to contain both calcium- and DNA-binding motifs, including two EF-hands, a basic amino-acid-rich region and a leucine zipper. Western blotting revealed a band at approximately 63 kDa, corresponding to the expected size of the NUCB1 protein (PMID: 15255074)

Publications notables

Autrice	Pubmed ID	Journal	Application
Saad Fawzy A FA	20556378	Int Orthop	WB

Stockage

Stockage:

Stocker à -20°C. Stable pendant un an après l'expédition.

Tampon de stockage:

PBS avec azoture de sodium à 0,02 % et glycérol à 50 % pH 7,3

L'aliquotage n'est pas nécessaire pour le stockage à -20C

*** Les 20ul contiennent 0,1% de BSA.

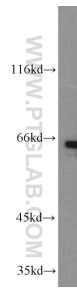
For technical support and original validation data for this product please contact:

T: 1 (888) 4PTGLAB (1-888-478-4522) (toll free in USA), or 1(312) 455-8498 (outside USA)

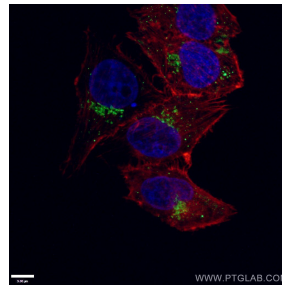
E: proteintech@ptglab.com
W: ptglab.com

This product is exclusively available under Proteintech Group brand and is not available to purchase from any other manufacturer.

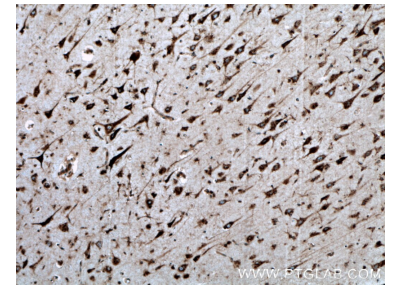
Données de validation sélectionnées



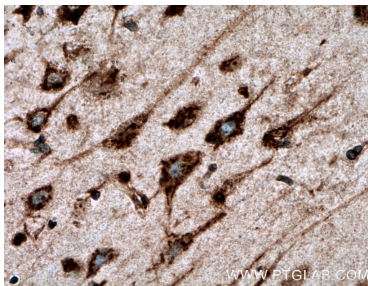
MCF7 cells were subjected to SDS PAGE followed by western blot with 10228-1-AP (nucleobindin 1 antibody) at dilution of 1:1000 incubated at room temperature for 1.5 hours.



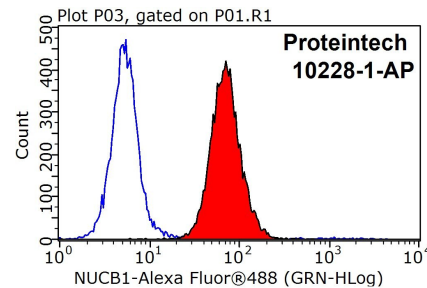
Immunofluorescent analysis of (4% PFA) fixed HepG2 cells using 10228-1-AP (nucleobindin 1 antibody) at dilution of 1:50 and CoraLite488-Conjugated AffiniPure Goat Anti-Rabbit IgG(H+L).



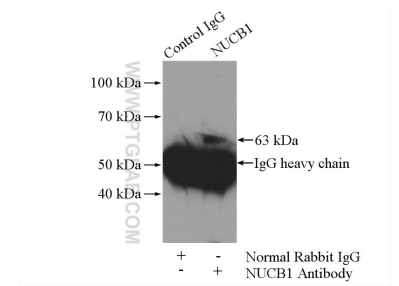
Immunohistochemical analysis of paraffin-embedded human brain tissue slide using 10228-1-AP (nucleobindin 1 antibody) at dilution of 1:200 (under 10x lens. Heat mediated antigen retrieval with Tris-EDTA buffer (pH 9.0).



Immunohistochemical analysis of paraffin-embedded human brain tissue slide using 10228-1-AP (nucleobindin 1 antibody) at dilution of 1:200 (under 40x lens. Heat mediated antigen retrieval with Tris-EDTA buffer (pH 9.0).



1×10^6 HepG2 cells were stained with 0.2ug nucleobindin 1 antibody (10228-1-AP, red) and control antibody (blue). Fixed with 90% MeOH blocked with 3% BSA (30 min). Alexa Fluor 488-conjugated AffiniPure Goat Anti-Rabbit IgG(H+L) with dilution 1:1000.



IP Result of anti-nucleobindin 1 (IP:10228-1-AP, 4ug; Detection:10228-1-AP 1:1000) with HepG2 cells lysate 2400ug.