

À des fins de recherche uniquement

# Anticorps Polyclonal de lapin anti-SAE1



Numéro de catalogue: 10229-1-AP

4 Publications

## Informations de base

Numéro de catalogue: 10229-1-AP	Numéro d'acquisition GenBank: BC000344	Méthode de purification: Purification par affinité contre l'antigène
Taille: 150ul , Concentration: 240 µg/ml by Nanodrop;	Identification du gène (NCBI): 10055	Dilutions recommandées: WB 1:200-1:1000 IHC 1:20-1:200 IF 1:20-1:200
Hôte: Lapin	Nom complet: SUMO1 activating enzyme subunit 1	
Isotype: IgG	MW calculé 38 kDa	
Immunogen Catalog Number: AG0275	MW observés: 38 kDa	

## Applications

### Applications testées:

IF, IHC, WB, ELISA

### Demandes citées:

IHC, WB

### Spécificité de l'espèce:

Humain, rat, souris

### Espèces citées:

Humain, souris

### Contrôles positifs:

WB : cellules A431, cellules A549, cellules COLO 320, cellules HEK-293, cellules HeLa

IHC : tissu de cancer du côlon humain, tissu de cancer de la peau humain

IF : cellules HeLa,

**Remarque-IHC: il est suggéré de démasquer l'antigène avec un tampon de TE buffer pH 9,0; (\*) À défaut, le démasquage de l'antigène peut être effectué avec un tampon citrate pH 6,0.**

## Informations générales

SAE1(SUMO-activating enzyme subunit 1) is also named as AOS1, SUA1, UBLE1A and belongs to the ubiquitin-activating E1 family. SAE1 has a calculated molecular mass of 38 kD. It had an apparent molecular mass of 40 kD by SDS-PAGE. SAE1 and UBA2 form a heterodimer that functions as a SUMO-activating enzyme for the sumoylation of proteins(PMID:9920803). Western blot analysis of synchronized HeLa cells detects increased AOS1 expression as cells progressed through S phase, followed by a substantial decrease in G2 phase. Immunofluorescence analysis shows AOS1 and UBA2 distributed throughout nuclei, but they are excluded from nucleoli.(PMID:11481243).

## Publications notables

Autrice	Pubmed ID	Journal	Application
Lingjie Yan	36414671	Nat Commun	WB
Dong Chen	22342750	Curr Biol	WB
Yang Liu	35859792	Open Med (Wars)	IHC

## Stockage

### Stockage:

Stocker à -20°C. Stable pendant un an après l'expédition.

### Tampon de stockage:

PBS avec azoture de sodium à 0,02 % et glycérol à 50 % pH 7,3

L'aliquotage n'est pas nécessaire pour le stockage à -20C

\*\*\* Les 20ul contiennent 0,1% de BSA.

For technical support and original validation data for this product please contact:

T: 1 (888) 4PTGLAB (1-888-478-4522) (toll free in USA), or 1(312) 455-8498 (outside USA)

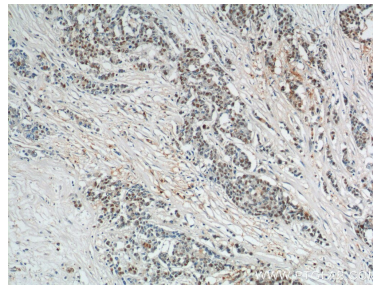
E: proteintech@ptglab.com  
W: ptglab.com

This product is exclusively available under Proteintech Group brand and is not available to purchase from any other manufacturer.

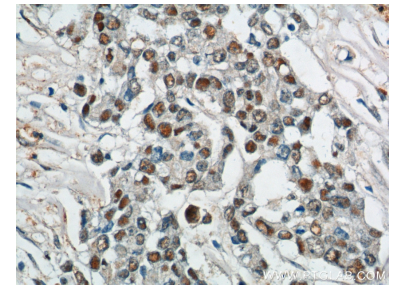
## Données de validation sélectionnées



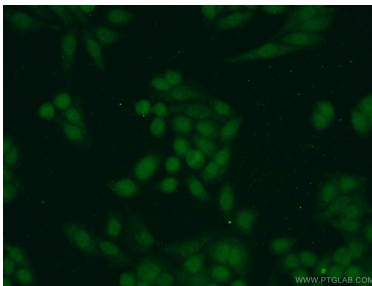
A431 cells were subjected to SDS PAGE followed by western blot with 10229-1-AP (SAE1 antibody) at dilution of 1:300 incubated at room temperature for 1.5 hours.



Immunohistochemical analysis of paraffin-embedded human colon cancer tissue slide using 10229-1-AP (SAE1 Antibody) at dilution of 1:200 (under 10x lens).



Immunohistochemical analysis of paraffin-embedded human colon cancer tissue slide using 10229-1-AP (SAE1 Antibody) at dilution of 1:200 (under 40x lens).



Immunofluorescent analysis of HeLa cells using 10229-1-AP (SAE1 antibody) at dilution of 1:50 and Alexa Fluor 488-conjugated AffiniPure Goat Anti-Rabbit IgG(H+L).