

À des fins de recherche uniquement

Anticorps Polyclonal de lapin anti-NDE1



Numéro de catalogue: 10233-1-AP

Phare

35 Publications

Informations de base

Numéro de catalogue:
10233-1-AP

Taille:
150ul, Concentration: 900 µg/ml by Nanodrop and 453 µg/ml by Bradford method using BSA as the standard;

Hôte:
Lapin

Isotype:
IgG

Immunogen Catalog Number:
AG0336

Numéro d'acquisition GenBank:
BC001421

Identification du gène (NCBI):
54820

Nom complet:
nudE nuclear distribution gene E homolog 1 (A. nidulans)

MW calculé
335 aa, 38 kDa

MW observés:
40 kDa

Méthode de purification:
Purification par affinité contre l'antigène

Dilutions recommandées:
WB 1:500-1:3000
IP 0.5-4.0 ug for IP and 1:500-1:3000 for WB
IHC 1:20-1:200
IF 1:200-1:800

Applications

Applications testées:
IF, IHC, IP, WB, ELISA

Demandes citées:
CoIP, IF, IHC, IP, WB

Spécificité de l'espèce:
Humain, rat, souris

Espèces citées:
Humain, rat, souris

Remarque-IHC: il est suggéré de démasquer l'antigène avec un tampon de TE buffer pH 9,0; (*) A défaut, 'le démasquage de l'antigène peut être effectué avec un tampon citrate pH 6,0.

Contrôles positifs:

WB : cellules A2780, cellules HEK-293, cellules HeLa, cellules HepG2, tissu cérébral de rat, tissu cérébral de souris, tissu hépatique de rat, tissu hépatique de souris

IP : cellules HEK-293,

IHC : tissu de cancer du sein humain, tissu de cancer du côlon humain

IF : tissu de cancer du sein humain, cellules MCF-7

Informations générales

NDE1 (NUDE /NUDE1) is a LIS1-interacting protein. A signaling pathway containing NDE1, LIS1, and cytoplasmic dynein is conserved for eukaryotic nuclear migration and has profound impact on neuronal migration during development of the central nervous system. LIS1 and dynein have been shown to be involved in mitosis and NDE1 participates in a subset of dynein function in M phase. NDE1 is specifically phosphorylated in M phase in its serine/threonine phosphorylation motifs, probably by Cdc2 and also Erk1 and Erk2. A fraction of NDE1 binds to centrosomes strongly in interphase and is localized to mitotic spindles in early M phase. Phosphorylation of NDE1 also regulates the cell-cycle-dependent distribution, possibly by increasing its dissociation rate at the microtubule-organizing center. This antibody is a rabbit polyclonal antibody raised against a peptide mapping within human NDE1.

Publications notables

Autrice	Pubmed ID	Journal	Application
Shauna L Houlihan	25245017	Elife	IF
Syeda Ridita Sharif	27646688	Mol Cells	IF
Shubhankar Nath	27534551	J Immunol	WB

Stockage

Stockage:

Stocker à -20°C. Stable pendant un an après l'expédition.

Tampon de stockage:

PBS avec azoture de sodium à 0,02 % et glycérol à 50 % pH 7,3

L'aliquotage n'est pas nécessaire pour le stockage à -20C

*** Les 20ul contiennent 0,1% de BSA.

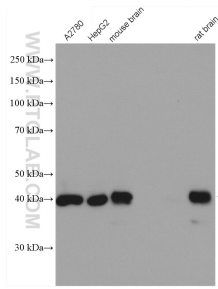
For technical support and original validation data for this product please contact:

T: 1 (888) 4PTGLAB (1-888-478-4522) (toll free in USA), or 1(312) 455-8498 (outside USA)

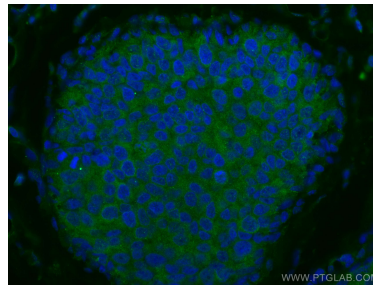
E: proteintech@ptglab.com
W: ptglab.com

This product is exclusively available under Proteintech Group brand and is not available to purchase from any other manufacturer.

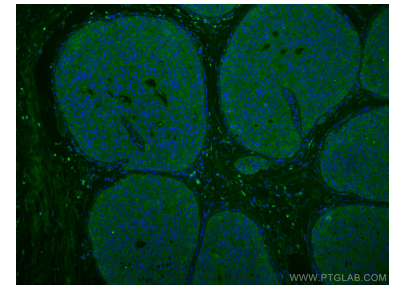
Données de validation sélectionnées



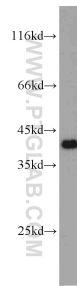
Various cells were subjected to SDS PAGE followed by western blot with 10233-1-AP (NDE1 antibody) at dilution of 1:1500 incubated at room temperature for 1.5 hours.



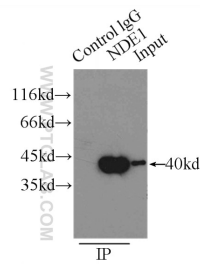
Immunofluorescent analysis of (4% PFA) fixed human breast cancer tissue using NDE1 antibody (10233-1-AP) at dilution of 1:400 and CoraLite®488-Conjugated AffiniPure Goat Anti-Rabbit IgG(H+L).



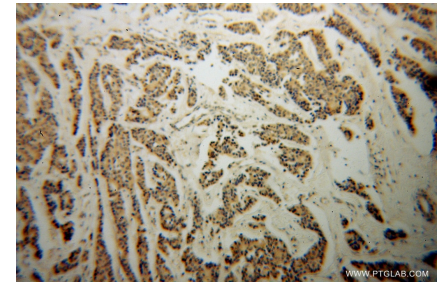
Immunofluorescent analysis of (4% PFA) fixed human breast cancer tissue using NDE1 antibody (10233-1-AP) at dilution of 1:400 and CoraLite®488-Conjugated AffiniPure Goat Anti-Rabbit IgG(H+L).



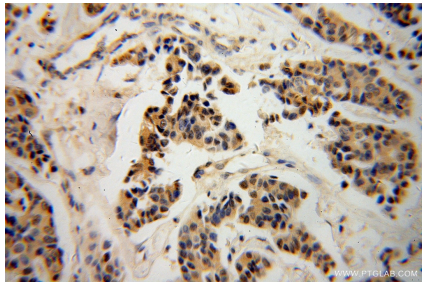
A2780 cells were subjected to SDS PAGE followed by western blot with 10233-1-AP (NDE1 antibody) at dilution of 1:1500 incubated at room temperature for 1.5 hours.



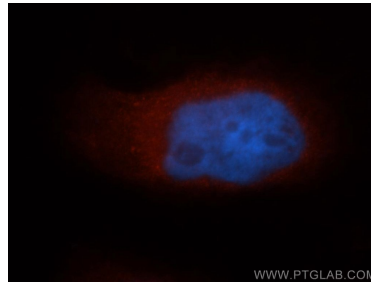
IP Result of anti-NDE1 (IP:10233-1-AP, 3ug; Detection:10233-1-AP 1:1500) with HEK-293 cells lysate 4500ug.



Immunohistochemical analysis of paraffin-embedded human breast cancer using 10233-1-AP (NDE1 antibody) at dilution of 1:100 (under 10x lens).



Immunohistochemical analysis of paraffin-embedded human breast cancer using 10233-1-AP (NDE1 antibody) at dilution of 1:100 (under 40x lens).



Immunofluorescent analysis of MCF-7 cells, using NDE1 antibody 10233-1-AP at 1:50 dilution and Rhodamine-labeled goat anti-rabbit IgG (red). Blue pseudocolor = DAPI (fluorescent DNA dye).