

À des fins de recherche uniquement

Anticorps Polyclonal de lapin anti-Transgelin 2



Numéro de catalogue: 10234-2-AP

Phare

20 Publications

Informations de base

Numéro de catalogue:
10234-2-AP

Taille:
150ul, Concentration: 350 µg/ml by Nanodrop and 213 µg/ml by Bradford method using BSA as the standard;

Hôte:
Lapin

Isotype:
IgG

Immunogen Catalog Number:
AG0337

Numéro d'acquisition GenBank:
BC002616

Identification du gène (NCBI):
8407

Nom complet:
transgelin 2

MW calculé
199 aa, 22 kDa

MW observés:
22 kDa

Méthode de purification:
Purification par affinité contre l'antigène

Dilutions recommandées:
WB 1:500-1:1000
IHC 1:20-1:200
IF 1:20-1:200

Applications

Applications testées:
IF, IHC, WB, ELISA

Demandes citées:
ELISA, IF, IHC, IP, WB

Spécificité de l'espèce:
Humain, souris

Espèces citées:
Humain, souris

Remarque-IHC: il est suggéré de démasquer l'antigène avec un tampon de TE buffer pH 9,0; (*) À défaut, 'le démasquage de l'antigène peut être effectué avec un tampon citrate pH 6,0.

Contrôles positifs:

WB : tissu cardiaque humain, cellules HEK-293, cellules T-47D

IHC : tissu de cancer du côlon humain, tissu de carcinome urothélial humain

IF : cellules HepG2,

Informations générales

The transgelin family is a group of proteins that belong to 22 kDa actin-related corpnin superfamily. Of all three isoforms, transgelin 1 is the best characterized. Transgelin 1, also known as SM22 alpha, is a specific marker for differentiated smooth muscle cells. Transgelin 2, also known as SM22 beta, is expressed by both smooth muscle and non-smooth muscle cells in a temporally and spatially regulated pattern. Trangenlin 3, also known as NP25, is only found in highly differentiated neuronal cells. This antibody was generated against full length transgelin 2 protein. It may cross react with other two transgelins based on the sequence similarity.

Publications notables

Autrice	Pubmed ID	Journal	Application
Rong Ding	34553339	J Physiol Biochem	WB, IP, IHC
In-Gyu Kim	30191639	Cancer Sci	WB, IHC, IF
Shaojian Lin	33123464	Front Oncol	WB

Stockage

Stockage:
Stocker à -20°C. Stable pendant un an après l'expédition.

Tampon de stockage:
PBS avec azoture de sodium à 0,02 % et glycérol à 50 % pH 7,3
L'aliquotage n'est pas nécessaire pour le stockage à -20C

*** Les 20ul contiennent 0,1% de BSA.

For technical support and original validation data for this product please contact:

T: 1 (888) 4PTGLAB (1-888-478-4522) (toll free in USA), or 1(312) 455-8498 (outside USA)

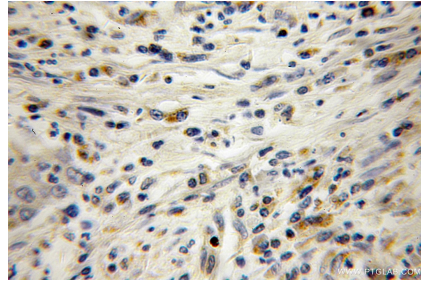
E: proteintech@ptglab.com
W: ptglab.com

This product is exclusively available under Proteintech Group brand and is not available to purchase from any other manufacturer.

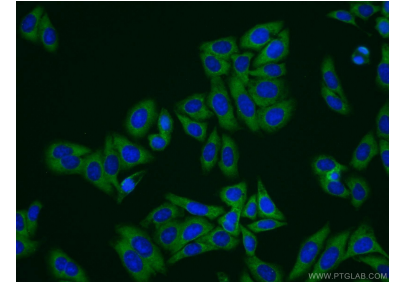
Données de validation sélectionnées



human heart tissue were subjected to SDS PAGE followed by western blot with 10234-2-AP (Transgelin 2 antibody) at dilution of 1:600 incubated at room temperature for 1.5 hours.



Immunohistochemical analysis of paraffin-embedded human colon cancer using 10234-2-AP (Transgelin 2 antibody) at dilution of 1:100 (under 10x lens).



Immunofluorescent analysis of HepG2 cells using 10234-2-AP (Transgelin 2 antibody) at dilution of 1:50 and Alexa Fluor 488-conjugated AffiniPure Goat Anti-Rabbit IgG(H+L).