

À des fins de recherche uniquement

Anticorps Polyclonal de lapin anti-S100A11



Numéro de catalogue: 10237-1-AP

Phare

43 Publications

Informations de base

Numéro de catalogue:
10237-1-AP

Taille:
150ul, Concentration: 550 µg/ml by Nanodrop and 460 µg/ml by Bradford method using BSA as the standard;

Hôte:
Lapin

Isotype:
IgG

Immunogen Catalog Number:
AG0343

Numéro d'acquisition GenBank:
BC001410

Identification du gène (NCBI):
6282

Nom complet:
S100 calcium binding protein A11

MW calculé:
105 aa, 12 kDa

MW observés:
12 kDa

Méthode de purification:
Purification par affinité contre l'antigène

Dilutions recommandées:
WB 1:2000-1:12000
IP 0.5-4.0 ug for IP and 1:500-1:2000 for WB
IHC 1:50-1:500
IF 1:200-1:800

Applications

Applications testées:
FC, IF, IHC, IP, WB, ELISA

Demandes citées:
ColP, IF, IHC, WB

Spécificité de l'espèce:
Humain, rat, souris

Espèces citées:
Humain, rat, souris

Remarque-IHC: il est suggéré de démasquer l'antigène avec un tampon de TE buffer pH 9,0; (*) À défaut, le démasquage de l'antigène peut être effectué avec un tampon citrate pH 6,0.

Contrôles positifs:

WB : cellules DU 145, cellules BxPC-3, cellules COLO 320, cellules HaCaT, cellules HCT 116, cellules HEK-293, cellules SKOV-3, cellules U2OS, tissu cardiaque humain, tissu pulmonaire humain

IP : cellules PC-3,

IHC : tissu de cancer du sein humain, tissu de cancer de la thyroïde humaine, tissu de cancer du col de l'utérus humain, tissu de cancer du côlon humain, tissu de cancer du foie humain, tissu de cancer du poumon humain, tissu de tumeur ovarienne humaine, tissu hépatique de souris, tissu rénal de rat, tissu rénal de souris

IF : cellules PC-3, cellules BxPC-3

Informations générales

S100A11 (also known as S100C or calziggarin), is a member of the S100 family of proteins containing 2 EF-hand calcium-binding motifs (PMID: 18694925). S100 proteins are localized in the cytoplasm and/or nucleus of a wide range of cells, and involved in the regulation of a number of cellular processes such as cell cycle progression and differentiation. First discovered in 1989, S100A11 has since been proposed to have direct biological functions in an assortment of physiological processes such as endo- and exocytosis, regulation of enzyme activity, cell growth and regulation, apoptosis and inflammation (PMID: 15241500). Chromosomal rearrangements and altered expression of S100A11 have been implicated in tumor metastasis. This S100A11 antibody (10237-1-AP) has also been instrumental in investigations into S100A11's role in the development of brain tumors in tuberous sclerosis complex (TSC) patients (PMID: 20133820).

Publications notables

Autrice	Pubmed ID	Journal	Application
Yu-Pu Liu	33132818	Front Neurosci	IF
Arseniy E Yuzhalin	31545917	Am J Physiol Gastrointest Liver Physiol	IF
Arsila P. K. Ashraf	36200035	Front Cell Dev Biol	IF

Stockage

Stockage:

Stocker à -20°C. Stable pendant un an après l'expédition.

Tampon de stockage:

PBS avec azoture de sodium à 0,02 % et glycérol à 50 % pH 7,3

L'aliquotage n'est pas nécessaire pour le stockage à -20C

*** Les 20ul contiennent 0,1% de BSA.

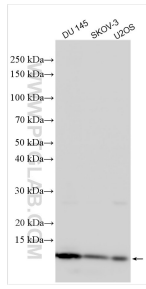
For technical support and original validation data for this product please contact:

T: 1 (888) 4PTGLAB (1-888-478-4522) (toll free in USA), or 1(312) 455-8498 (outside USA)

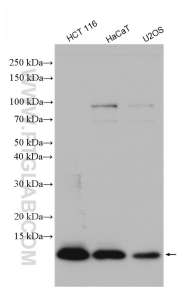
E: proteintech@ptglab.com
W: ptglab.com

This product is exclusively available under Proteintech Group brand and is not available to purchase from any other manufacturer.

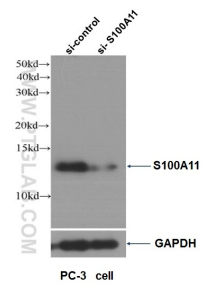
Données de validation sélectionnées



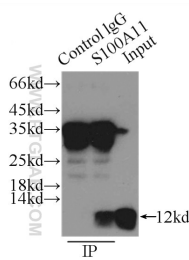
Various lysates were subjected to SDS PAGE followed by western blot with 10237-1-AP (S100A11 antibody) at dilution of 1:6000 incubated at room temperature for 1.5 hours.



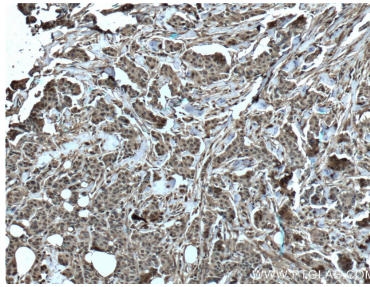
Various lysates were subjected to SDS PAGE followed by western blot with 10237-1-AP (S100A11 antibody) at dilution of 1:1000 incubated at room temperature for 1.5 hours.



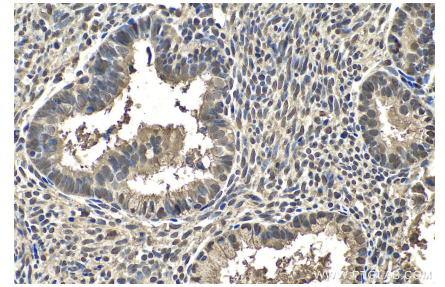
WB result of S100A11 antibody (10237-1-AP, 1:4000) with si-control and si-S100A11 transfected PC-3 cells.



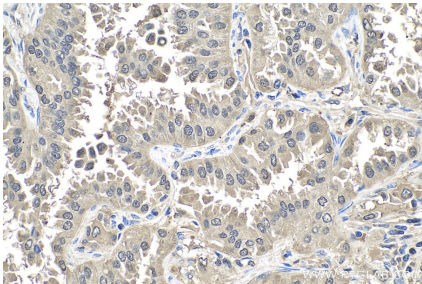
IP Result of anti-S100A11 (IP:10237-1-AP, 3ug; Detection:10237-1-AP 1:1000) with PC-3 cells lysate 1000ug.



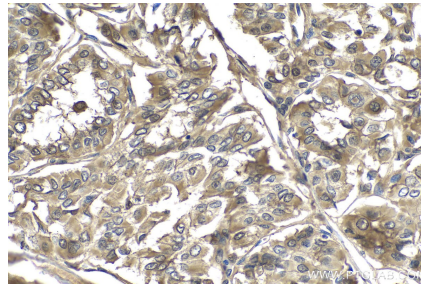
Immunohistochemical analysis of paraffin-embedded human breast cancer tissue slide using 10237-1-AP (S100A11 Antibody) at dilution of 1:200 (under 10x lens). Heat mediated antigen retrieval with Tris-EDTA buffer (pH 9.0).



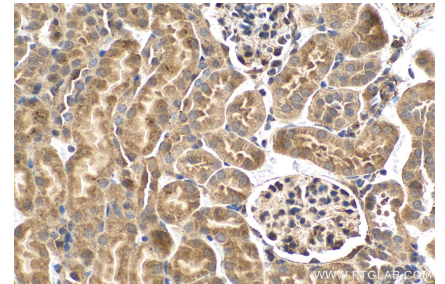
Immunohistochemical analysis of paraffin-embedded human cervical cancer tissue slide using 10237-1-AP (S100A11 antibody) at dilution of 1:1000 (under 40x lens). Heat mediated antigen retrieval with Tris-EDTA buffer (pH 9.0).



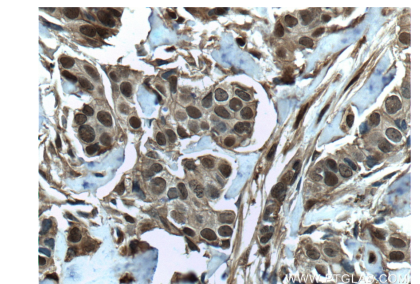
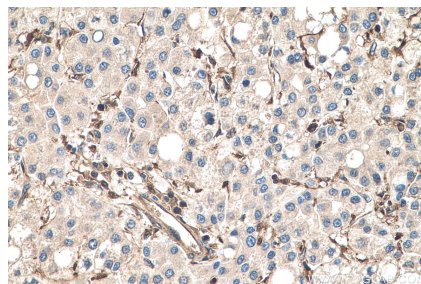
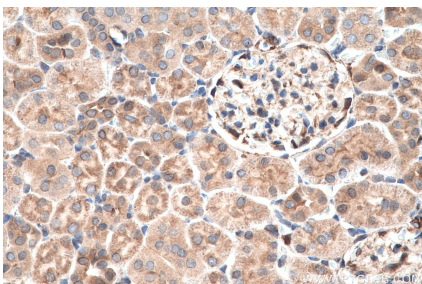
Immunohistochemical analysis of paraffin-embedded human lung cancer tissue slide using 10237-1-AP (S100A11 antibody) at dilution of 1:1000 (under 40x lens). Heat mediated antigen retrieval with Tris-EDTA buffer (pH 9.0).



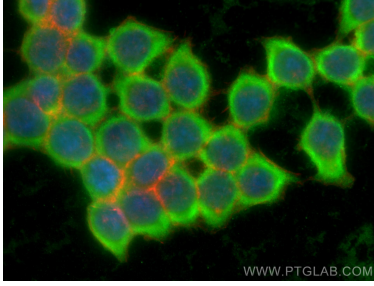
Immunohistochemical analysis of paraffin-embedded human thyroid cancer tissue slide using 10237-1-AP (S100A11 antibody) at dilution of 1:1000 (under 40x lens). Heat mediated antigen retrieval with Tris-EDTA buffer (pH 9.0).



Immunohistochemical analysis of paraffin-embedded mouse kidney tissue slide using 10237-1-AP (S100A11 antibody) at dilution of 1:1000 (under 40x lens). Heat mediated antigen retrieval with Tris-EDTA buffer (pH 9.0).

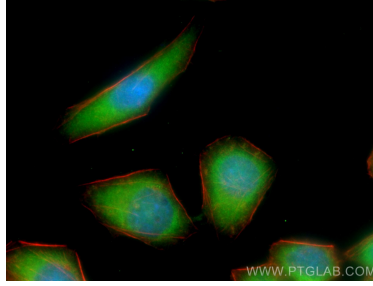


Immunohistochemical analysis of paraffin-embedded rat kidney tissue slide using 10237-1-AP (S100A11 antibody) at dilution of 1:1000 (under 40x lens). Heat mediated antigen retrieval with Tris-EDTA buffer (pH 9.0).



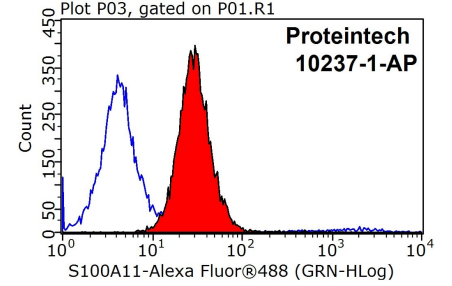
Immunofluorescent analysis of (-20°C Ethanol) fixed BxPC-3 cells using S100A11 antibody (10237-1-AP) at dilution of 1:400 and CoraLite®488-Conjugated AffiniPure Goat Anti-Rabbit IgG(H+L), CL594-Phalloidin (red).

Immunohistochemical analysis of paraffin-embedded human liver cancer tissue slide using 10237-1-AP (S100A11 antibody) at dilution of 1:1000 (under 40x lens). Heat mediated antigen retrieval with Tris-EDTA buffer (pH 9.0).



Immunofluorescent analysis of (-20°C Ethanol) fixed PC-3 cells using S100A11 antibody (10237-1-AP) at dilution of 1:400 and CoraLite®488-Conjugated AffiniPure Goat Anti-Rabbit IgG(H+L).

Immunohistochemical analysis of paraffin-embedded human breast cancer tissue slide using 10237-1-AP (S100A11 Antibody) at dilution of 1:200 (under 40x lens). Heat mediated antigen retrieval with Tris-EDTA buffer (pH 9.0).



1X10⁶ MCF-7 cells were stained with 0.2ug S100A11 antibody (10237-1-AP, red) and control antibody (blue). Fixed with 90% MeOH blocked with 3% BSA (30 min). Alexa Fluor 488-conjugated AffiniPure Goat Anti-Rabbit IgG(H+L) with dilution 1:1000.