

À des fins de recherche uniquement

# Anticorps Polyclonal de lapin anti-P21



Numéro de catalogue: 10240-1-AP

1 Publications

## Informations de base

Numéro de catalogue:

10240-1-AP

Taille:

150ul, Concentration: 293 µg/ml by Bradford method using BSA as the standard;

Hôte:

Lapin

Isotype:

IgG

Immunogen Catalog Number:

AG0308

Numéro d'acquisition GenBank:

BC000312

Identification du gène (NCBI):

1026

Nom complet:

cyclin-dependent kinase inhibitor 1A (p21, Cip1)

MW calculé

21 kDa

Méthode de purification:

Purification par affinité contre l'antigène

## Applications

Applications testées:

IF, ELISA

Demandes citées:

WB

Spécificité de l'espèce:

Humain, rat, souris

Espèces citées:

Humain

## Informations générales

CDKN1A (p21, CIP1, WAF1), a cyclin-dependent kinase inhibitor, is necessary for proper control of the cell cycle and premature senescence. P21 is a cyclin-dependent kinase (CDK) inhibitor that suppresses proliferation by inhibiting CDK2 and CDK1 activity at the G1/S and G2/M transitions. P21 is a major mediator of p53 to induce cell cycle arrest in G1. p21 can interact with proliferating cell nuclear antigen (PCNA), and plays a regulatory role in S phase DNA replication and DNA damage repair. P21 was reported to be specifically cleaved by CASP3-like caspases, which thus leads to a dramatic activation of CDK2, and may be instrumental in the execution of apoptosis following caspase activation. Overexpression of p21 decreases the expression levels of cell cycle progression genes and upregulates senescence-inducing genes.

## Publications notables

Autrice	Pubmed ID	Journal	Application
Chen Song S	22427918	PLoS One	WB

## Stockage

Stockage:

Stocker à -20°C. Stable pendant un an après l'expédition.

Tampon de stockage:

PBS avec azoture de sodium à 0,02 % et glycérol à 50 % pH 7,3

L'aliquotage n'est pas nécessaire pour le stockage à -20C

\*\*\* Les 20ul contiennent 0,1% de BSA.

For technical support and original validation data for this product please contact:

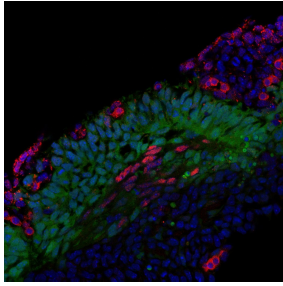
T: 1 (888) 4PTGLAB (1-888-478-4522) (toll free in USA), or 1(312) 455-8498 (outside USA)

E: [proteintech@ptglab.com](mailto:proteintech@ptglab.com)  
W: [ptglab.com](http://ptglab.com)

This product is exclusively available under Proteintech Group brand and is not available to purchase from any other manufacturer.

---

## Données de validation sélectionnées



IF result of anti-P21(10240-1-AP) in the myotome of a somite at E11,5 by Dr. Zalc A. and Relaix F. (UPMC - UMRS 787).