

À des fins de recherche uniquement

Anticorps Polyclonal de lapin anti-CBX1



Numéro de catalogue: 10241-2-AP

Phare

8 Publications

Informations de base

Numéro de catalogue:

10241-2-AP

Taille:

150ul, Concentration: 650 µg/ml by Nanodrop;

Hôte:

Lapin

Isotype:

IgG

Immunogen Catalog Number:

AG0328

Numéro d'acquisition GenBank:

BC002609

Identification du gène (NCBI):

10951

Nom complet:

chromobox homolog 1 (HP1 beta homolog Drosophila)

MW calculé

27 kDa

MW observés:

27 kDa

Méthode de purification:

Purification par affinité contre l'antigène

Dilutions recommandées:

WB 1:500-1:2000

IP 0.5-4.0 ug for IP and 1:500-1:1000 for WB

IF 1:50-1:500

Applications

Applications testées:

IF, IP, WB, ELISA

Demandes citées:

IF, IHC, IP, WB

Spécificité de l'espèce:

Humain, rat, souris

Espèces citées:

Humain, souris

Contrôles positifs:

WB : cellules A431, cellules HEK-293, cellules MCF-7, cellules NIH/3T3, tissu cérébral humain

IP : cellules HEK-293,

IF : cellules HEK-293,

Informations générales

One function of heterochromatin is the epigenetic silencing by sequestration of genes into transcriptionally repressed nuclear neighborhoods. Heterochromatin protein 1 (HP1) is a major component of heterochromatin and is a candidate for establishing and mediating gene silencing. This protein is expressed in all adult and embryonic tissues, as a homodimer.

Publications notables

Autrice	Pubmed ID	Journal	Application
Yin Zhao	36310139	Adv Sci (Weinh)	WB,IHC,IP
Zhangping He	32161174	J Virol	WB
Guang Yang	28361889	Nat Commun	WB

Stockage

Stockage:

Stocker à -20°C. Stable pendant un an après l'expédition.

Tampon de stockage:

PBS avec azoture de sodium à 0,02 % et glycérol à 50 % pH 7,3

L'aliquotage n'est pas nécessaire pour le stockage à -20C

*** Les 20ul contiennent 0,1% de BSA.

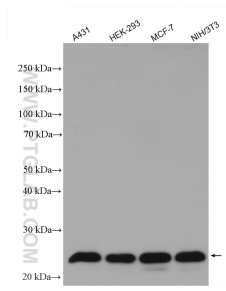
For technical support and original validation data for this product please contact:

T: 1 (888) 4PTGLAB (1-888-478-4522) (toll free in USA), or 1(312) 455-8498 (outside USA)

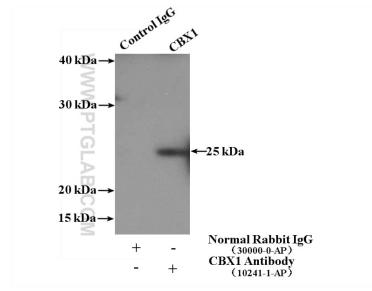
E: proteintech@ptglab.com
W: ptglab.com

This product is exclusively available under Proteintech Group brand and is not available to purchase from any other manufacturer.

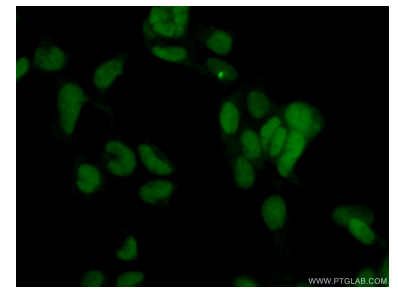
Données de validation sélectionnées



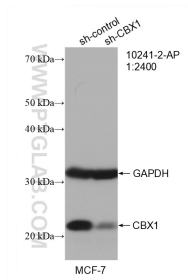
Various lysates were subjected to SDS PAGE followed by western blot with 10241-2-AP (CBX1 antibody) at dilution of 1:1000 incubated at room temperature for 1.5 hours.



IP Result of anti-CBX1 (IP:10241-2-AP, 3ug; Detection:10241-2-AP 1:500) with HEK-293 cells lysate 1480ug.



Immunofluorescent analysis of (10% Formaldehyde) fixed HEK-293 cells using 10241-2-AP (CBX1 antibody) at dilution of 1:50 and Alexa Fluor 488-conjugated AffiniPure Goat Anti-Rabbit IgG(H+L).



WB result of CBX1 antibody (10241-2-AP; 1:2400; incubated at room temperature for 1.5 hours) with sh-Control and sh-CBX1 transfected MCF-7 cells.