

À des fins de recherche uniquement

# Anticorps Polyclonal de lapin anti-GDI1



Numéro de catalogue: 10249-1-AP

5 Publications

## Informations de base

Numéro de catalogue:  
10249-1-AP

Taille:  
150ul, Concentration: 180 µg/ml by Nanodrop and 180 µg/ml by Bradford method using BSA as the standard;

Hôte:  
Lapin

Isotype:  
IgG

Immunogen Catalog Number:  
AG0288

Numéro d'acquisition GenBank:  
BC000317

Identification du gène (NCBI):  
2664

Nom complet:  
GDP dissociation inhibitor 1

MW calculé  
51 kDa

MW observés:  
55 kDa

Méthode de purification:  
Purification par affinité contre l'antigène

Dilutions recommandées:  
WB 1:500-1:2000  
IP 0.5-4.0 ug for IP and 1:500-1:1000 for WB  
IHC 1:50-1:500

## Applications

Applications testées:  
IHC, IP, WB, ELISA

Demandes citées:  
ELISA, IF, WB

Spécificité de l'espèce:  
Humain, rat, souris

Espèces citées:  
Humain, souris

**Remarque-IHC: il est suggéré de démasquer l'antigène avec un tampon de TE buffer pH 9,0; (\*) À défaut, 'le démasquage de l'antigène peut être 'effectué avec un tampon citrate pH 6,0.**

Contrôles positifs:

WB : tissu cérébral de souris, tissu cérébral de rat, tissu cérébral humain

IP : tissu cérébral de souris,

IHC : tissu de cancer du sein humain,

## Informations générales

GDP dissociation inhibitors (GDIs) are proteins that regulate the GDP-GTP exchange reaction of members of the rab family. GDIs can bind and release GDP-bound Rab proteins from membranes. Two GDI proteins towards different Rab proteins have been identified. GDI1 interacts with almost all of the Rab proteins, while GDI2 interacts with Rab11 but not Rab3A. GDI1 is expressed primarily in neural and sensory tissues and also in secretory cells, displaying a diffuse, cytoplasmic distribution in cells. It runs as a 55kda protein in SDS-PAGE. (PMID: 7929030, PMID: 19570034) This antibody can bind both GDIs for the close sequences.

## Publications notables

Autrice	Pubmed ID	Journal	Application
Xueyi Li	19699304	Neurobiol Dis	WB
Masato Mashimo	35887176	Int J Mol Sci	IF
Ye Chen	34994492	EMBO Rep	IF

## Stockage

Stockage:

Stocker à -20°C. Stable pendant un an après l'expédition.

Tampon de stockage:

PBS avec azoture de sodium à 0,02 % et glycérol à 50 % pH 7,3

L'aliquotage n'est pas nécessaire pour le stockage à -20C

\*\*\* Les 20ul contiennent 0,1% de BSA.

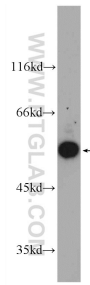
For technical support and original validation data for this product please contact:

T: 1 (888) 4PTGLAB (1-888-478-4522) (toll free in USA), or 1(312) 455-8498 (outside USA)

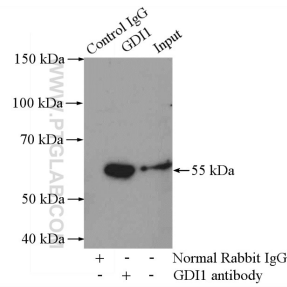
E: proteintech@ptglab.com  
W: ptglab.com

This product is exclusively available under Proteintech Group brand and is not available to purchase from any other manufacturer.

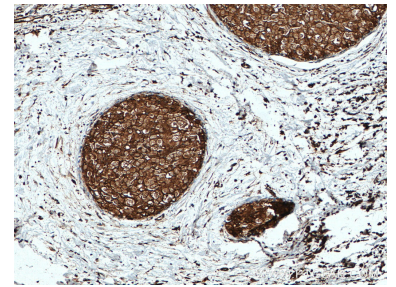
## Données de validation sélectionnées



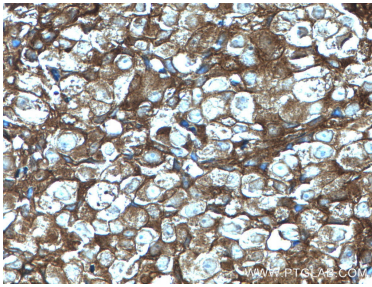
mouse brain tissue were subjected to SDS PAGE followed by western blot with 10249-1-AP (GDI1 Antibody) at dilution of 1:1000 incubated at room temperature for 1.5 hours.



IP Result of anti-GDI1 (IP:10249-1-AP, 4ug; Detection:10249-1-AP 1:800) with mouse brain tissue lysate 4000ug.



Immunohistochemical analysis of paraffin-embedded human breast cancer tissue slide using 10249-1-AP (GDI1 antibody) at dilution of 1:200 (under 10x lens. Heat mediated antigen retrieval with Tris-EDTA buffer (pH 9.0).



Immunohistochemical analysis of paraffin-embedded human breast cancer tissue slide using 10249-1-AP (GDI1 antibody) at dilution of 1:200 (under 40x lens. Heat mediated antigen retrieval with Tris-EDTA buffer (pH 9.0).