

À des fins de recherche uniquement

Anticorps Polyclonal de lapin anti-Cdc20



Numéro de catalogue: 10252-1-AP

Phare

28 Publications

Informations de base

Numéro de catalogue:
10252-1-AP

Taille:
150ul, Concentration: 400 µg/ml by Nanodrop and 327 µg/ml by Bradford method using BSA as the standard;

Hôte:
Lapin

Isotype:
IgG

Immunogen Catalog Number:
AG0295

Numéro d'acquisition GenBank:
BC001088

Identification du gène (NCBI):
991

Nom complet:
cell division cycle 20 homolog (S. cerevisiae)

MW calculé:
55 kDa

MW observés:
55 kDa

Méthode de purification:
Purification par affinité contre l'antigène

Dilutions recommandées:
WB 1:2000-1:14000
IP 0.5-4.0 ug for IP and 1:500-1:1000 for WB
IHC 1:50-1:500
IF 1:200-1:800

Applications

Applications testées:
IF, IHC, IP, WB, ELISA

Demandes citées:
IF, IHC, WB

Spécificité de l'espèce:
Humain

Espèces citées:
canin, Humain, souris

Remarque-IHC: il est suggéré de démasquer l'antigène avec un tampon de TE buffer pH 9,0; (*) À défaut, le démasquage de l'antigène peut être effectué avec un tampon citrate pH 6,0.

Contrôles positifs:

WB : cellules HEK-293, cellules HeLa, cellules HepG2, cellules HL-60, cellules Jurkat, cellules PC-3

IP : cellules Jurkat,

IHC : tissu de cancer du sein humain, tissu de cancer du côlon humain, tissu de carcinome urothélial humain

IF : cellules HeLa,

Informations générales

Cdc20 (Cell-division cycle protein 20 homologue) is also named as p55CDC and belongs to the WD repeat CDC20/Fizzy family. Cdc20 has important functions in chromosome segregation and mitotic exit. Cdc20 is the target of the spindle assembly checkpoint (SAC) and a key cofactor of the anaphase-promoting complex or cyclosome (APC/CCDC20) E3 ubiquitin ligase, thus regulating APC/C ubiquitin activity on specific substrates for their subsequent degradation by the proteasome (PMID: 28202332). The 55-kDa band corresponded to the size of Cdc20 (PMID: 22566641).

Publications notables

Autrice	Pubmed ID	Journal	Application
Yuan Yuan Bai	36213833	J Oncol	WB
Xie Mengyan	36176446	Front Pharmacol	WB, IHC
Yang Gao	32932732	Int J Mol Sci	WB

Stockage

Stockage:

Stocker à -20°C. Stable pendant un an après l'expédition.

Tampon de stockage:

PBS avec azoture de sodium à 0,02 % et glycérol à 50 % pH 7,3

L'aliquotage n'est pas nécessaire pour le stockage à -20C

*** Les 20ul contiennent 0,1% de BSA.

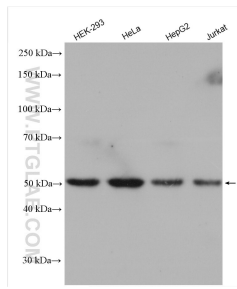
For technical support and original validation data for this product please contact:

T: 1 (888) 4PTGLAB (1-888-478-4522) (toll free in USA), or 1(312) 455-8498 (outside USA)

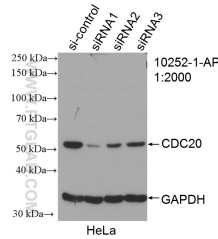
E: proteintech@ptglab.com
W: ptglab.com

This product is exclusively available under Proteintech Group brand and is not available to purchase from any other manufacturer.

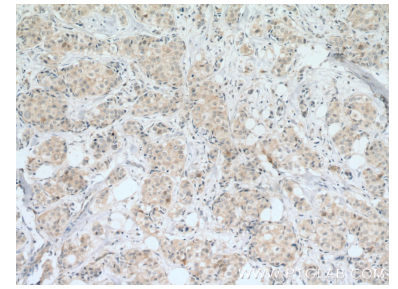
Données de validation sélectionnées



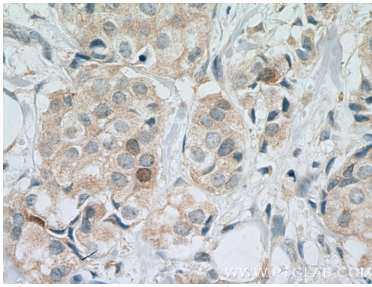
Various lysates were subjected to SDS PAGE followed by western blot with 10252-1-AP (Cdc20 antibody) at dilution of 1:7000 incubated at room temperature for 1.5 hours.



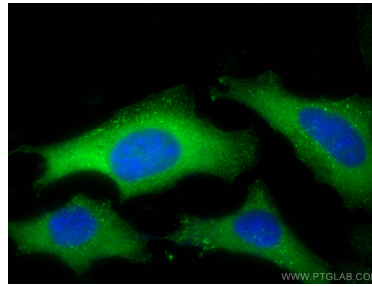
WB result of Cdc20 antibody (10252-1-AP; 1:2000; incubated at room temperature for 1.5 hours) with sh-Control and sh-Cdc20 transfected HeLa cells.



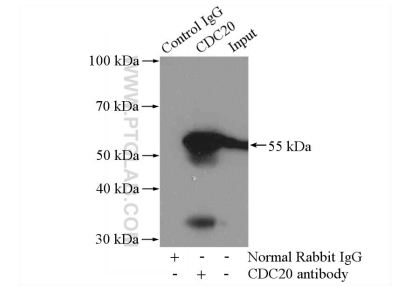
Immunohistochemical analysis of paraffin-embedded human breast cancer tissue slide using 10252-1-AP (CDC20 Antibody) at dilution of 1:200 (under 10x lens). Heat mediated antigen retrieval with Tris-EDTA buffer (pH 9.0).



Immunohistochemical analysis of paraffin-embedded human breast cancer tissue slide using 10252-1-AP (CDC20 Antibody) at dilution of 1:200 (under 40x lens). Heat mediated antigen retrieval with Tris-EDTA buffer (pH 9.0).



Immunofluorescent analysis of (-20°C Ethanol) fixed HeLa cells using Cdc20 antibody (10252-1-AP) at dilution of 1:400 and CoraLite®488-Conjugated AffiniPure Goat Anti-Rabbit IgG(H+L).



IP Result of anti-CDC20 (IP:10252-1-AP, 4ug; Detection:10252-1-AP 1:800) with Jurkat cells lysate 3200ug.