

À des fins de recherche uniquement

Anticorps Polyclonal de lapin anti-STAT3



Numéro de catalogue: 10253-2-AP

Phare

341 Publications

Informations de base

Numéro de catalogue:
10253-2-AP

Taille:
150ul, Concentration: 500 µg/ml by
Nanodrop;

Hôte:
Lapin

Isotype:
IgG

Immunogen Catalog Number:
AG0360

Numéro d'acquisition GenBank:
BC000627

Identification du gène (NCBI):
6774

Nom complet:
signal transducer and activator of
transcription 3 (acute-phase response
factor)

MW calculé
770 aa, 88 kDa

MW observés:
88 kDa

Méthode de purification:
Purification par affinité contre
l'antigène

Dilutions recommandées:
WB 1:2000-1:16000
IP 0.5-4.0 ug for IP and 1:1000-1:4000
for WB
IHC 1:50-1:500
IF 1:50-1:500

Applications

Applications testées:
FC, IF, IHC, IP, WB, ELISA

Demandes citées:
ChIP, CoIP, IF, IHC, IP, WB

Spécificité de l'espèce:
Humain, rat, souris

Espèces citées:
Humain, poisson-zèbre, rat, souris

Remarque-IHC: il est suggéré de démasquer l'antigène avec un tampon de TE buffer pH 9.0; (*) À défaut, 'le démasquage de l'antigène peut être effectué avec un tampon citrate pH 6,0.

Contrôles positifs:

WB : cellules A549, cellules A431, cellules HeLa, cellules Jurkat, cellules K-562, cellules MCF-7, cellules NIH/3T3, cellules PC-12, tissu cardiaque de souris, tissu cérébral de rat, tissu cérébral de souris, tissu pulmonaire de souris

IP : cellules HeLa,

IHC : tissu de cancer de l'estomac humain, tissu de cancer du col de l'utérus humain, tissu de cancer du côlon humain, tissu de cancer du sein humain, tissu de côlon de souris

IF : cellules HeLa,

Informations générales

Signal transducer and activator of transcription 3 (acute-phase response factor) (STAT3, synonyms: APRF, FLJ20882, MGC16063) is a member of the STAT protein family. In response to cytokines and growth factors, STAT family members are phosphorylated by the receptor associated kinases, and then form homo- or heterodimers that translocate to the cell nucleus where they act as transcription activators. STAT3 is activated through phosphorylation in response to various cytokines and growth factors including IFNs, EGF, IL5, IL6, HGF, LIF and BMP2. STAT3 mediates the expression of a variety of genes in response to cell stimuli, and thus plays a key role in many cellular processes such as cell growth and apoptosis. The small GTPase Rac1 has been shown to bind and regulate the activity of STAT3. This antibody is a rabbit polyclonal antibody raised against residues near the N terminus of human STAT3. STAT3 exists three isoforms and the molecular weight of each isoform respectively is 83 kDa, 87 kDa and 88 kDa.

Publications notables

Autrice	Pubmed ID	Journal	Application
Huanru Wang	31575039	Int J Mol Sci	WB,IF
Xun Chen	36179418	Int Immunopharmacol	WB,IHC,IF
Lin Deng	36170649	J Med Chem	WB

Stockage

Stockage:
Stocker à -20°C. Stable pendant un an après l'expédition.

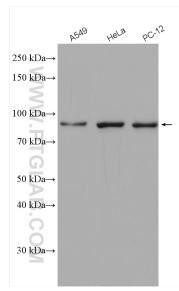
Tampon de stockage:
PBS avec azoture de sodium à 0,02 % et glycérol à 50 % pH 7,3
L'aliquotage n'est pas nécessaire pour le stockage à -20C

*** Les 20ul contiennent 0,1% de BSA.

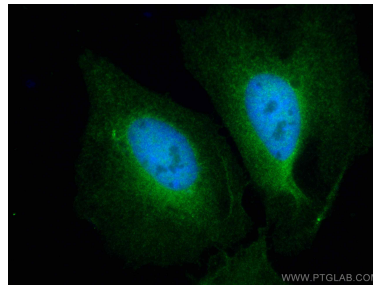
For technical support and original validation data for this product please contact:
T: 1 (888) 4PTGLAB (1-888-478-4522) (toll free in USA), or 1(312) 455-8498 (outside USA)
E: proteintech@ptglab.com
W: ptglab.com

This product is exclusively available under Proteintech Group brand and is not available to purchase from any other manufacturer.

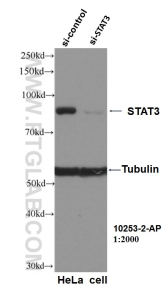
Données de validation sélectionnées



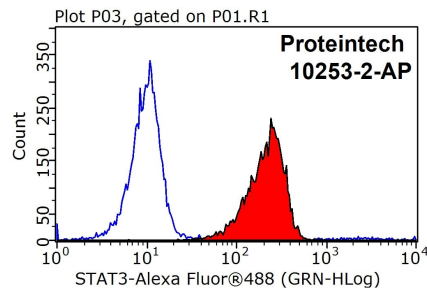
Various lysates were subjected to SDS PAGE followed by western blot with 10253-2-AP (STAT3 antibody) at dilution of 1:2000 incubated at room temperature for 1.5 hours.



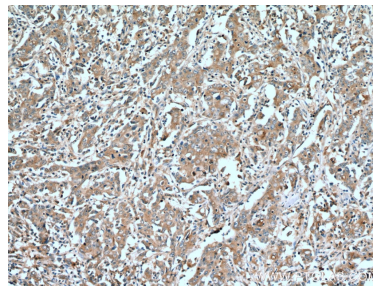
Immunofluorescent analysis of (4% PFA) fixed HeLa cells using STAT3 antibody (10253-2-AP) at dilution of 1:200 and CoraLite@488-Conjugated AffiniPure Goat Anti-Rabbit IgG(H+L). DAPI (blue).



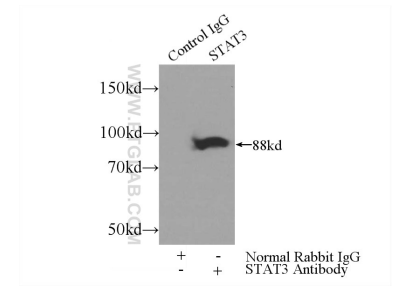
WB result of STAT3 antibody (10253-2-AP, 1:2000) with si-control and si-STAT3 transfected HeLa cells.



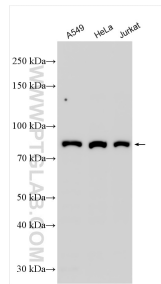
1X10⁶ HeLa cells were stained with 0.2ug STAT3 antibody (10253-2-AP, red) and control antibody (blue). Fixed with 90% MeOH blocked with 3% BSA (30 min). Alexa Fluor 488-conjugated AffiniPure Goat Anti-Rabbit IgG(H+L) with dilution 1:1000.



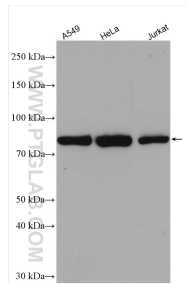
Immunohistochemical analysis of paraffin-embedded human stomach cancer tissue slide using 10253-2-AP (STAT3 antibody) at dilution of 1:200 (under 10x lens). Heat mediated antigen retrieval with Tris-EDTA buffer (pH 9.0).



IP Result of anti-STAT3 (IP:10253-2-AP, 3ug; Detection:10253-2-AP 1:2000) with HeLa cells lysate 3000ug.



Various lysates were subjected to SDS PAGE followed by western blot with 10253-2-AP (STAT3 antibody) at dilution of 1:8000 incubated at room temperature for 1.5 hours.



A549 cells were subjected to SDS PAGE followed by western blot with 10253-2-AP (STAT3 antibody) at dilution of 1:8000 incubated at room temperature for 1.5 hours.