

À des fins de recherche uniquement

# Anticorps Polyclonal de lapin anti-GRB2



Numéro de catalogue: 10254-2-AP

Phare

13 Publications

## Informations de base

<b>Numéro de catalogue:</b> 10254-2-AP	<b>Numéro d'acquisition GenBank:</b> BC000631	<b>Méthode de purification:</b> Purification par affinité contre l'antigène
<b>Taille:</b> 150ul, Concentration: 600 µg/ml by Nanodrop and 333 µg/ml by Bradford method using BSA as the standard;	<b>Identification du gène (NCBI):</b> 2885	<b>Dilutions recommandées:</b> WB 1:500-1:2000 IHC 1:50-1:500 IF 1:10-1:100
<b>Hôte:</b> Lapin	<b>Nom complet:</b> growth factor receptor-bound protein 2	
<b>Isotype:</b> IgG	<b>MW calculé:</b> 25 kDa	
<b>Immunogen Catalog Number:</b> AG0395	<b>MW observés:</b> 25-28 kDa	

## Applications

### Applications testées:

IF, IHC, WB, ELISA

### Demandes citées:

IF, IHC, WB

### Spécificité de l'espèce:

Humain, rat, souris

### Espèces citées:

Humain, souris

**Remarque-IHC: il est suggéré de démasquer l'antigène avec un tampon de TE buffer pH 9,0; (\*) A défaut, 'le démasquage de l'antigène peut être effectué avec un tampon citrate pH 6,0.**

### Contrôles positifs:

WB : cellules HEK-293, cellules A431, tissu cérébral de rat, tissu splénique de rat

IHC : tissu de cancer du pancréas humain,

IF : cellules HEK-293,

## Informations générales

GRB2 (growth factor receptor-bound protein 2) binds the epidermal growth factor receptor and contains one SH2 domain and two SH3 domains. Two alternatively spliced transcript variants encoding different isoforms have been found for this gene. N-SH3 domain of Grb2 was involved in the protein vesicular localization including amyloid-beta protein precursor. Involvement of GRB2 in Ras-signaling pathway has been reported, recent finding show that GRB2 may also play a complex role in T and B-cell antigen receptor signaling.

## Publications notables

Autrice	Pubmed ID	Journal	Application
Libo Hou	28889064	Mol Immunol	WB
Jie Lv	31634528	Cancer Lett	IHC
Jin-Feng Zhu	30479571	Cancer Cell Int	WB

## Stockage

### Stockage:

Stocker à -20°C. Stable pendant un an après l'expédition.

### Tampon de stockage:

PBS avec azoture de sodium à 0,02 % et glycérol à 50 % pH 7,3

L'aliquotage n'est pas nécessaire pour le stockage à -20C

\*\*\* Les 20ul contiennent 0,1% de BSA.

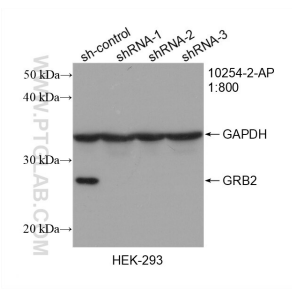
For technical support and original validation data for this product please contact:

T: 1 (888) 4PTGLAB (1-888-478-4522) (toll free in USA), or 1(312) 455-8498 (outside USA)

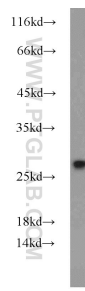
E: proteintech@ptglab.com  
W: ptglab.com

This product is exclusively available under Proteintech Group brand and is not available to purchase from any other manufacturer.

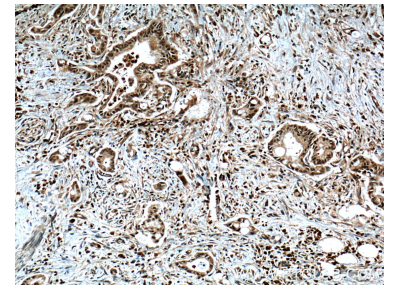
## Données de validation sélectionnées



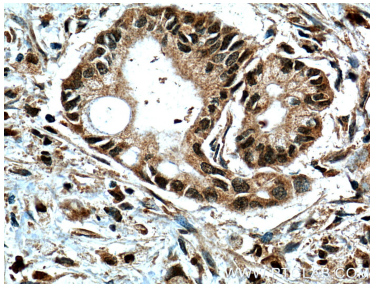
WB result of GRB2 antibody (10254-2-AP; 1:800; incubated at room temperature for 1.5 hours) with sh-Control and sh-GRB2 transfected HEK-293 cells.



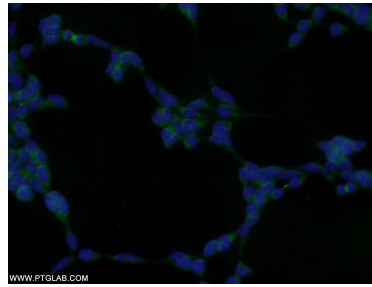
HEK-293 cells were subjected to SDS PAGE followed by western blot with 10254-2-AP (GRB2 antibody) at dilution of 1:1000 incubated at room temperature for 1.5 hours.



Immunohistochemical analysis of paraffin-embedded human pancreas cancer tissue slide using 10254-2-AP (GRB2 Antibody) at dilution of 1:200 (under 10x lens). Heat mediated antigen retrieval with Tris-EDTA buffer (pH 9.0).



Immunohistochemical analysis of paraffin-embedded human pancreas cancer tissue slide using 10254-2-AP (GRB2 Antibody) at dilution of 1:200 (under 40x lens). Heat mediated antigen retrieval with Tris-EDTA buffer (pH 9.0).



Immunofluorescent analysis of HEK-293 cells using 10254-2-AP (GRB2 antibody) at dilution of 1:25 and Alexa Fluor 488-conjugated AffiniPure Goat Anti-Rabbit IgG(H+L).