

À des fins de recherche uniquement

Anticorps Polyclonal de lapin anti-TES



Numéro de catalogue: 10258-1-AP

3 Publications

Informations de base

Numéro de catalogue:
10258-1-AP

Taille:
150ul, Concentration: 600 µg/ml by
Nanodrop and 333 µg/ml by Bradford
method using BSA as the standard;

Hôte:
Lapin

Isotype:
IgG

Immunogen Catalog Number:
AG0379

Numéro d'acquisition GenBank:
BC001451

Identification du gène (NCBI):
26136
Nom complet:
testis derived transcript (3 LIM
domains)

MW calculé
48 kDa

MW observés:
38-48 kDa

Méthode de purification:
Purification par affinité contre
l'antigène

Dilutions recommandées:
WB 1:500-1:1000
IP 0.5-4.0 ug for IP and 1:500-1:3000
for WB
IF 1:50-1:500

Applications

Applications testées:
IF, IP, WB, ELISA

Demandes citées:
WB

Spécificité de l'espèce:
Humain, rat, souris

Espèces citées:
Humain, souris

Contrôles positifs:

WB : cellules HEK-293, cellules K-562, cellules MCF-7,
tissu testiculaire de souris

IP : cellules K-562,

IF : cellules HEK-293,

Informations générales

Testin (TES) is a cytoskeleton-associated protein that localizes along actin stress fibers at cell-cell contact areas and at focal adhesion plaques. It interacts with a variety of cytoskeletal proteins and gets involved in regulation of cell adhesion and migration. TES is a putative tumor suppressor and reduced expression of TES has been reported in various cancers. In addition, TES is a marker for Sertoli-Germ Cell junction and is useful to monitor the disruption of intercellular junctions in the testis.

Publications notables

Autrice	Pubmed ID	Journal	Application
Giedrius Steponaitis	27899997	Oncol Lett	WB
Fengfeng Wu	35071320	Front Mol Biosci	WB
Hansen Deborah A DA	24174576	Biol Reprod	WB

Stockage

Stockage:

Stocker à -20°C. Stable pendant un an après l'expédition.

Tampon de stockage:

PBS avec azoture de sodium à 0,02 % et glycérol à 50 % pH 7,3

L'aliquotage n'est pas nécessaire pour le stockage à -20C

*** Les 20ul contiennent 0,1% de BSA.

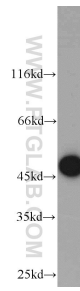
For technical support and original validation data for this product please contact:

T: 1 (888) 4PTGLAB (1-888-478-4522) (toll free
in USA), or 1(312) 455-8498 (outside USA)

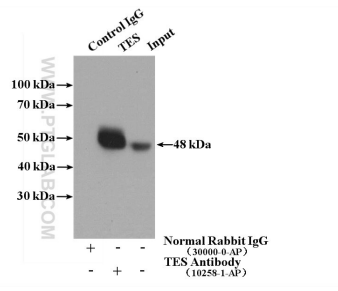
E: proteintech@ptglab.com
W: ptglab.com

This product is exclusively available under Proteintech Group brand and is not available to purchase from any other manufacturer.

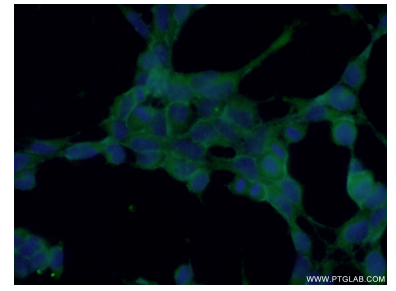
Données de validation sélectionnées



HEK-293 cells were subjected to SDS PAGE followed by western blot with 10258-1-AP (TES antibody) at dilution of 1:300 incubated at room temperature for 1.5 hours.



IP Result of anti-TES (IP:10258-1-AP, 4ug; Detection:10258-1-AP 1:1500) with K-562 cells lysate 4000ug.



Immunofluorescent analysis of (-20°C Ethanol) fixed HEK-293 cells using 10258-1-AP (TES antibody) at dilution of 1:50 and Alexa Fluor 488-conjugated AffiniPure Goat Anti-Rabbit IgG(H+L).