

À des fins de recherche uniquement

Anticorps Polyclonal de lapin anti-Drebrin



Numéro de catalogue: 10260-1-AP

16 Publications

Informations de base

Numéro de catalogue:
10260-1-AP

Taille:
150ul, Concentration: 500 µg/ml by Nanodrop and 267 µg/ml by Bradford method using BSA as the standard;

Hôte:
Lapin

Isotype:
IgG

Immunogen Catalog Number:
AG0371

Numéro d'acquisition GenBank:
BC000283

Identification du gène (NCBI):
1627

Nom complet:
drebrin 1

MW calculé
71 kDa

MW observés:
100-130 kDa

Méthode de purification:
Purification par affinité contre l'antigène

Dilutions recommandées:
WB 1:5000-1:50000
IP 0.5-4.0 ug for IP and 1:1000-1:4000 for WB
IF 1:500-1:2000

Applications

Applications testées:
IF, IP, WB, ELISA

Demandes citées:
IF, IHC, IP, WB

Spécificité de l'espèce:
Humain, rat, souris

Espèces citées:
Humain, rat, souris

Contrôles positifs:

WB : cellules HeLa, cellules K-562, cellules Neuro-2a

IP : cellules K-562,

IF : cellules HeLa, cellules HepG2

Informations générales

Drebrin (DBN1) is an actin binding and stabilizing protein with roles in endocytosis, formation of dendrite spines in neurons and coordinating cell-cell synapses in immune cells. Preferentially expressed in the brain, it is highly localized in dendritic spines and regulates spine shapes. It has two isoforms that are splice variants, with drebrin A being expressed in neural cells, and drebrin E is present in several other cell types. Recently it has been reported that circulating DBN1 levels correlated with retinal nerve fiber layer defect and may reflect the severity of retinal ganglion cells injury in glaucoma patients.

Publications notables

Autrice	Pubmed ID	Journal	Application
Qiaoyan Yu	36155064	Biochem Biophys Res Commun	WB,IP
Hongchun Li	36096452	Mol Metab	WB
Runjiao Zhang	36307396	Cell Death Discov	IHC,WB

Stockage

Stockage:

Stocker à -20°C. Stable pendant un an après l'expédition.

Tampon de stockage:

PBS avec azoture de sodium à 0,02 % et glycérol à 50 % pH 7,3

L'aliquotage n'est pas nécessaire pour le stockage à -20C

*** Les 20ul contiennent 0,1% de BSA.

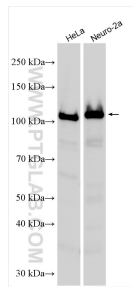
For technical support and original validation data for this product please contact:

T: 1 (888) 4PTGLAB (1-888-478-4522) (toll free in USA), or 1(312) 455-8498 (outside USA)

E: proteintech@ptglab.com
W: ptglab.com

This product is exclusively available under Proteintech Group brand and is not available to purchase from any other manufacturer.

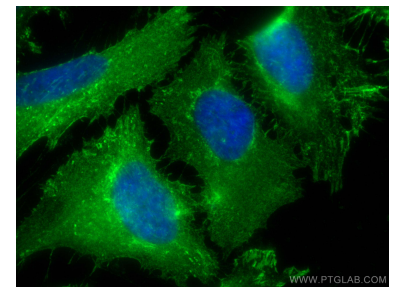
Données de validation sélectionnées



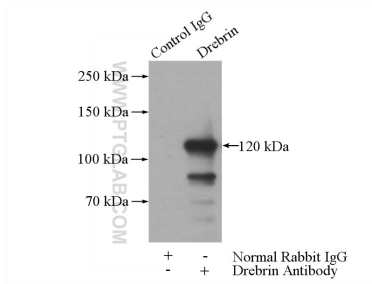
Various lysates were subjected to SDS PAGE followed by western blot with 10260-1-AP (Drebrin antibody) at dilution of 1:20000 incubated at room temperature for 1.5 hours.



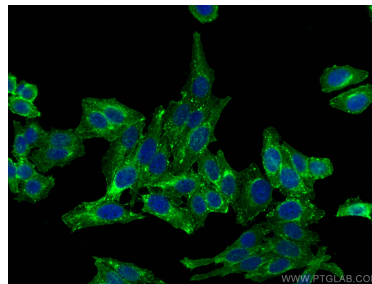
HeLa cells were subjected to SDS PAGE followed by western blot with 10260-1-AP (DBN1 antibody) at dilution of 1:1500 incubated at room temperature for 1.5 hours.



Immunofluorescent analysis of (-20°C Ethanol) fixed HeLa cells using Drebrin antibody (10260-1-AP) at dilution of 1:1000 and CoraLite®488-Conjugated AffiniPure Goat Anti-Rabbit IgG(H+L).



IP Result of anti-Drebrin (IP:10260-1-AP, 4ug; Detection:10260-1-AP 1:2000) with K-562 cells lysate 1200ug.



Immunofluorescent analysis of (-20°C Ethanol) fixed HepG2 cells using Drebrin antibody (10260-1-AP) at dilution of 1:400 and CoraLite®488-Conjugated AffiniPure Goat Anti-Rabbit IgG(H+L).