

À des fins de recherche uniquement

# Anticorps Polyclonal de lapin anti-IFNGR2



Numéro de catalogue: 10266-1-AP

5 Publications

## Informations de base

Numéro de catalogue:  
10266-1-AP

Taille:  
150ul, Concentration: 260 µg/ml by Nanodrop and 150 µg/ml by Bradford method using BSA as the standard;

Hôte:  
Lapin

Isotype:  
IgG

Immunogen Catalog Number:  
AG0317

Numéro d'acquisition GenBank:  
BC003624

Identification du gène (NCBI):  
3460

Nom complet:  
interferon gamma receptor 2  
(interferon gamma transducer 1)

MW calculé:  
45 kDa

MW observés:  
50-55 kDa

Méthode de purification:  
Purification par affinité contre l'antigène

Dilutions recommandées:  
WB 1:500-1:1000  
IP 0.5-4.0 ug for IP and 1:500-1:1000 for WB  
IHC 1:50-1:500

## Applications

Applications testées:  
FC, IHC, IP, WB, ELISA

Demandes citées:  
WB

Spécificité de l'espèce:  
Humain

Espèces citées:  
Humain, souris

**Remarque-IHC: il est suggéré de démasquer l'antigène avec un tampon de TE buffer pH 9.0; (\*) A défaut, 'le démasquage de l'antigène peut être effectué avec un tampon citrate pH 6,0.**

Contrôles positifs:

WB : cellules A549, cellules HeLa, cellules HepG2

IP : cellules A549,

IHC : tissu de cancer du sein humain,

## Informations générales

Interferon-gamma (IFN- $\gamma$ ) is a cytokine critical for innate and adaptive immunity against viral and intracellular bacterial infections and for tumor control. Cellular responses to IFN- $\gamma$  are activated through its interaction with a heterodimeric receptor consisting of two subunits, IFNGR1 and IFNGR2. IFNGR1 is the ligand-binding subunit which binds IFN- $\gamma$  with high affinity, whereas IFNGR2 serves as the accessory subunit which attaches to IFN- $\gamma$  with a significantly lower affinity. Two subunits bind one IFN- $\gamma$  dimer. Defects in IFNGR2 are a cause of mendelian susceptibility to mycobacterial disease (MSMD), also known as familial disseminated atypical mycobacterial infection. (PMID: 17981204; 946248; 10888113)

## Publications notables

Autrice	Pubmed ID	Journal	Application
Kefang Tan	28562647	PLoS One	WB
Timothy J Break	33446526	Science	WB
Qingnan Wu	34347390	Cancer Commun (Lond)	WB

## Stockage

Stockage:

Stocker à -20°C. Stable pendant un an après l'expédition.

Tampon de stockage:

PBS avec azoture de sodium à 0,02 % et glycérol à 50 % pH 7,3

L'aliquotage n'est pas nécessaire pour le stockage à -20C

\*\*\* Les 20ul contiennent 0,1% de BSA.

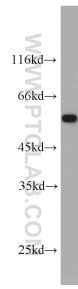
For technical support and original validation data for this product please contact:

T: 1 (888) 4PTGLAB (1-888-478-4522) (toll free in USA), or 1(312) 455-8498 (outside USA)

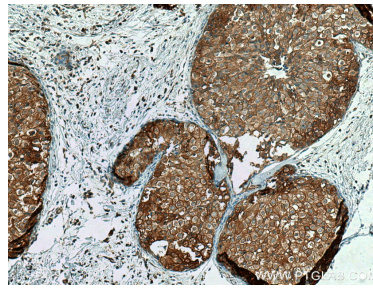
E: proteintech@ptglab.com  
W: ptglab.com

This product is exclusively available under Proteintech Group brand and is not available to purchase from any other manufacturer.

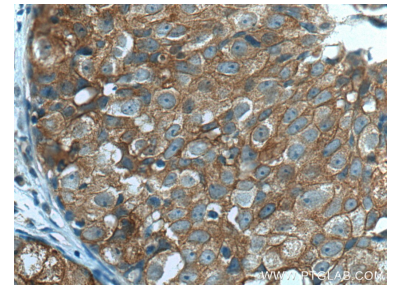
## Données de validation sélectionnées



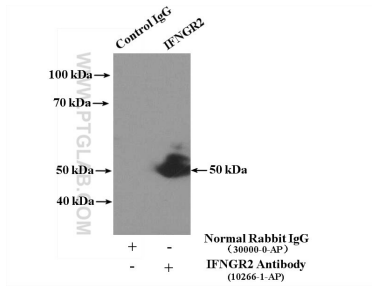
A549 cells were subjected to SDS PAGE followed by western blot with 10266-1-AP (IFNGR2 antibody) at dilution of 1:500 incubated at room temperature for 1.5 hours.



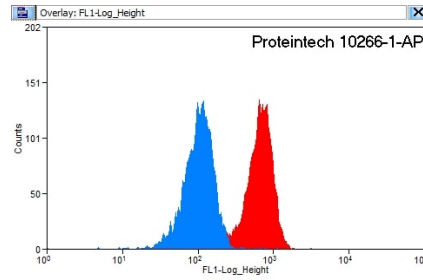
Immunohistochemical analysis of paraffin-embedded human breast cancer tissue slide using 10266-1-AP (IFNGR2 antibody) at dilution of 1:200 (under 10x Lens). Heat mediated antigen retrieval with Tris-EDTA buffer (pH 9.0).



Immunohistochemical analysis of paraffin-embedded human breast cancer tissue slide using 10266-1-AP (IFNGR2 antibody) at dilution of 1:200 (under 40x Lens). Heat mediated antigen retrieval with Tris-EDTA buffer (pH 9.0).



IP Result of anti-IFNGR2 (IP:10266-1-AP, 4ug; Detection:10266-1-AP 1:500) with A549 cells lysate 1800ug.



1X10<sup>6</sup> HeLa cells were stained with 0.2ug IFNGR2 antibody (10266-1-AP, red) and control antibody (blue). Fixed with 90% MeOH blocked with 3% BSA (30 min). Alexa Fluor 488-conjugated AffiniPure Goat Anti-Rabbit IgG(H+L) with dilution 1:1500.