

À des fins de recherche uniquement

Anticorps Polyclonal de lapin anti-IkB Alpha



Numéro de catalogue: 10268-1-AP

370 Publications

Informations de base

Numéro de catalogue: 10268-1-AP	Numéro d'acquisition GenBank: BC002601	Méthode de purification: Purification par affinité contre l'antigène
Taille: 150ul , Concentration: 800 µg/ml by Nanodrop;	Identification du gène (NCBI): 4792	Dilutions recommandées: WB 1:5000-1:50000 IP 0.5-4.0 ug for IP and 1:5000-1:50000 for WB
Hôte: Lapin	Nom complet: nuclear factor of kappa light polypeptide gene enhancer in B-cells inhibitor, alpha	IHC 1:50-1:500 IF 1:200-1:800
Isotype: IgG	MW calculé 36 kDa	
Immunogen Catalog Number: AG0345	MW observés: 36 kDa	

Applications

Applications testées:
FC, IF, IHC, IP, WB, ELISA

Demandes citées:
FC, IF, IHC, WB

Spécificité de l'espèce:
Humain, porc, rat, souris

Espèces citées:
bovin, Humain, porc, poulet, rat, souris

Remarque-IHC: il est suggéré de démasquer l'antigène avec un tampon de TE buffer pH 9.0; (*) A défaut, 'le démasquage de l'antigène peut être 'effectué avec un tampon citrate pH 6,0.

Contrôles positifs:

WB : cellules A431, cellules HEK-293, cellules HeLa, cellules HepG2, cellules HL-60, cellules Jurkat, cellules NIH/3T3, cellules PC-12, tissu hépatique de porc

IP : cellules HeLa,

IHC : tissu d'estomac humain, tissu de cancer de la prostate humaine, tissu rénal de souris, tissu rénal humain

IF : cellules A431, cellules HeLa

Informations générales

Nuclear factor of kappa light polypeptide gene enhancer in B-cells inhibitor, alpha (NFKB1A, synonyms: IKBA, MAD-3, NFKB1). NFKB1 or NFKB2 is bound to REL, RELA , or RELB to form the NFKB complex. The NFKB complex is inhibited by I-kappa-B proteins (NFKBIA or NFKBIB), which inactivate NF-kappa-B by trapping it in the cytoplasm. Phosphorylation of serine residues on the I-kappa-B proteins by kinases (IKBKA, or IKBKB) marks them for destruction via the ubiquitination pathway, thereby allowing activation of the NF-kappa-B complex. Activated NFKB complex translocates into the nucleus and binds DNA at kappa-B-binding motifs such as 5-prime GGGRNNYCC 3-prime or 5-prime HGGARNYYCC 3-prime.

Publications notables

Autrice	Pubmed ID	Journal	Application
Menghui Xu	36290677	Antioxidants (Basel)	WB
Kun-Yi Li	32920833	J Neurochem	WB
Yuqian Wang	32942847	J Agric Food Chem	WB

Stockage

Stockage:
Stocker à -20°C. Stable pendant un an après l'expédition.

Tampon de stockage:
PBS avec azoture de sodium à 0,02 % et glycérol à 50 % pH 7,3
L'aliquoteage n'est pas nécessaire pour le stockage à -20C

*** Les 20ul contiennent 0,1% de BSA.

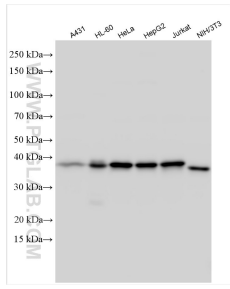
For technical support and original validation data for this product please contact:

T: 1 (888) 4PTGLAB (1-888-478-4522) (toll free in USA), or 1(312) 455-8498 (outside USA)

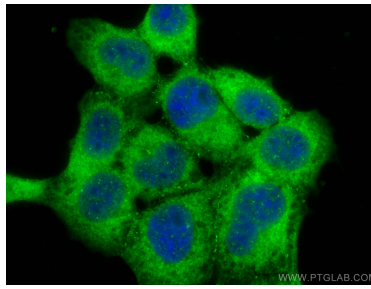
E: proteintech@ptglab.com
W: ptglab.com

This product is exclusively available under Proteintech Group brand and is not available to purchase from any other manufacturer.

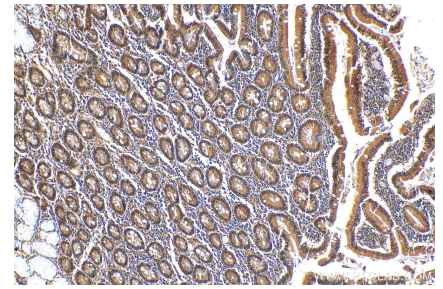
Données de validation sélectionnées



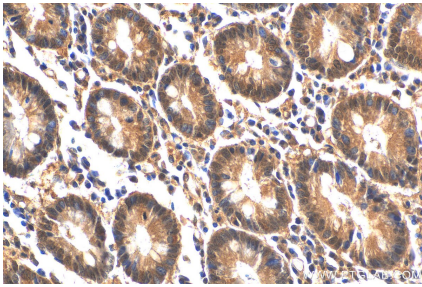
Various lysates were subjected to SDS PAGE followed by western blot with 10268-1-AP (IκB Alpha antibody) at dilution of 1:10000 incubated at room temperature for 1.5 hours.



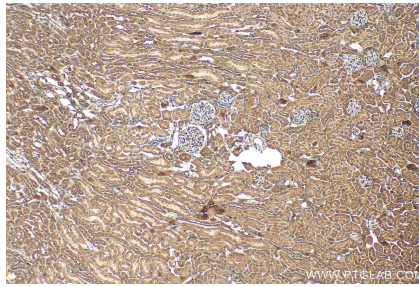
Immunofluorescent analysis of (-20°C Methanol) fixed A431 cells using IκB Alpha antibody (10268-1-AP) at dilution of 1:400 and CoraLite®488-Conjugated AffiniPure Goat Anti-Rabbit IgG(H+L).



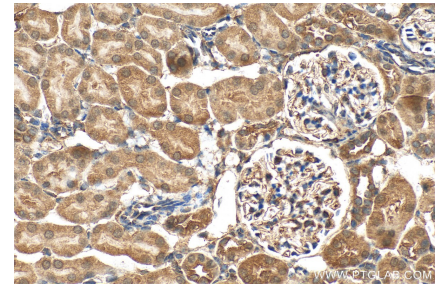
Immunohistochemical analysis of paraffin-embedded human stomach tissue slide using 10268-1-AP (IκB Alpha antibody) at dilution of 1:200 (under 10x lens).



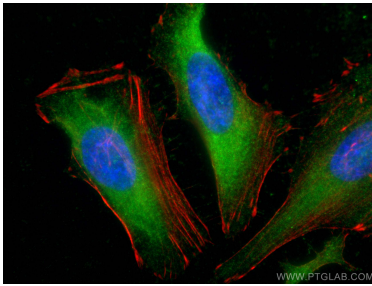
Immunohistochemical analysis of paraffin-embedded human stomach tissue slide using 10268-1-AP (IκB Alpha antibody) at dilution of 1:200 (under 40x lens).



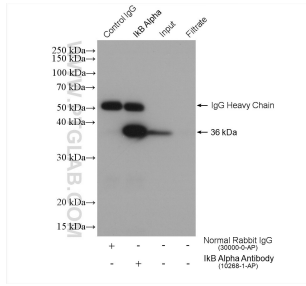
Immunohistochemical analysis of paraffin-embedded mouse kidney tissue slide using 10268-1-AP (IκB Alpha antibody) at dilution of 1:200 (under 10x lens). Heat mediated antigen retrieval with Tris-EDTA buffer (pH 9.0).



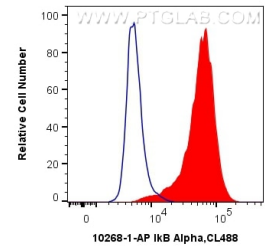
Immunohistochemical analysis of paraffin-embedded mouse kidney tissue slide using 10268-1-AP (IκB Alpha antibody) at dilution of 1:200 (under 40x lens). Heat mediated antigen retrieval with Tris-EDTA buffer (pH 9.0).



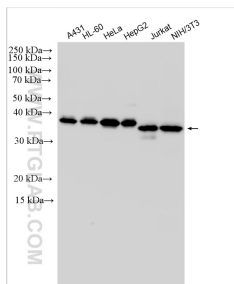
Immunofluorescent analysis of (-20°C Ethanol) fixed HeLa cells using IκB Alpha antibody (10268-1-AP) at dilution of 1:200 and CoraLite®488-Conjugated AffiniPure Goat Anti-Rabbit IgG(H+L), CL594-phalloidin (red).



IP result of anti-IκB Alpha (IP:10268-1-AP, 4ug; Detection:10268-1-AP 1:10000) with HeLa cells lysate 1720 ug.



1X10⁶ HeLa cells were intracellularly stained with 0.4 ug Anti-Human IκB Alpha (10268-1-AP) and CoraLite®488-Conjugated AffiniPure Goat Anti-Rabbit IgG(H+L) at dilution 1:1000 (red), or 0.4 ug Control Antibody. Cells were fixed with 4% PFA and permeabilized with Flow Cytometry Perm Buffer (PF00011-C).



Various lysates were subjected to SDS PAGE followed by western blot with 10268-1-AP (I κ B Alpha antibody) at dilution of 1:15000 incubated at room temperature for 1.5 hours.