

À des fins de recherche uniquement

Anticorps Polyclonal de lapin anti-TAU



Numéro de catalogue: 10274-1-AP

36 Publications

Informations de base

Numéro de catalogue: 10274-1-AP	Numéro d'acquisition GenBank: BC000558	Méthode de purification: Purification par affinité contre l'antigène
Taille: 150ul , Concentration: 750 µg/ml by Nanodrop;	Identification du gène (NCBI): 4137	Dilutions recommandées: WB 1:2000-1:12000 IHC 1:20-1:200 IF 1:50-1:500
Hôte: Lapin	Nom complet: microtubule-associated protein tau	
Isotype: IgG	MW calculé 37-46, 79-81 kDa	
Immunogen Catalog Number: AG0354	MW observés: 45-70 kDa, 100 kDa	

Applications

Applications testées:

IF, IHC, WB, ELISA

Demandes citées:

IF, IHC, WB

Spécificité de l'espèce:

Humain, rat, souris

Espèces citées:

Chèvre, Humain, rat, souris

Remarque-IHC: il est suggéré de démasquer l'antigène avec un tampon de TE buffer pH 9,0; (*) À défaut, le démasquage de l'antigène peut être effectué avec un tampon citrate pH 6,0.

Contrôles positifs:

WB : tissu cérébral de souris, cerveau de rat

IHC : tissu cérébral humain, tissu de gliome humain

IF : tissu cérébral de souris,

Informations générales

Tau (tubulin-associated unit) is a microtubule-associated protein (also known as MAPT), expressed mainly in neurons of the central nervous system. Its primary function is to modulate microtubule dynamics for maintaining axonal cytoskeleton. Various isoforms of Tau exist due to the alternative splicing, and short isoforms around 45-69 kDa and long isoforms around 100-110 kDa have been reported in different literature (8752131,15965697). Present polyclonal anti-Tau antibody was produced by immunizing animals with N-terminal of Tau and can detect approx 45-70 kDa and 100-kDa bands in brain tissues.

Publications notables

Autrice	Pubmed ID	Journal	Application
Fayi Nie	33113163	J Neurochem	WB
Shenya Xu	33183805	Sci Total Environ	WB, IHC
Jie Ai	33131696	Free Radic Biol Med	WB

Stockage

Stockage:

Stocker à -20°C. Stable pendant un an après l'expédition.

Tampon de stockage:

PBS avec azoture de sodium à 0,02 % et glycérol à 50 % pH 7,3

L'aliquotage n'est pas nécessaire pour le stockage à -20C

*** Les 20ul contiennent 0,1% de BSA.

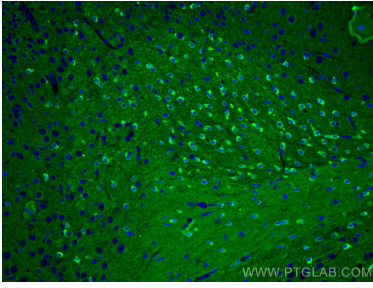
For technical support and original validation data for this product please contact:

T: 1 (888) 4PTGLAB (1-888-478-4522) (toll free in USA), or 1(312) 455-8498 (outside USA)

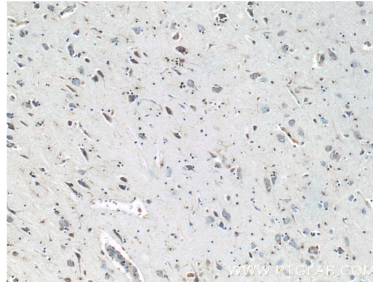
E: proteintech@ptglab.com
W: ptglab.com

This product is exclusively available under Proteintech Group brand and is not available to purchase from any other manufacturer.

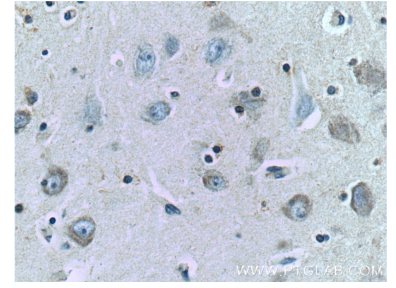
Données de validation sélectionnées



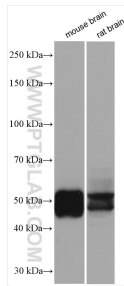
Immunofluorescent analysis of (4% PFA) fixed mouse brain tissue using TAU antibody (10274-1-AP) at dilution of 1:200 and CoraLite®488-Conjugated AffiniPure Goat Anti-Rabbit IgG(H+L).



Immunohistochemical analysis of paraffin-embedded human brain tissue slide using 10274-1-AP (TAU Antibody) at dilution of 1:200 (under 10x lens).



Immunohistochemical analysis of paraffin-embedded human brain tissue slide using 10274-1-AP (TAU Antibody) at dilution of 1:200 (under 40x lens).



mouse brain tissue were subjected to SDS PAGE followed by western blot with 10274-1-AP (TAU antibody) at dilution of 1:6000 incubated at room temperature for 1.5 hours.