

À des fins de recherche uniquement

# Anticorps Polyclonal de lapin anti-TRAPB/SSR2



Numéro de catalogue: 10278-1-AP

Phare

8 Publications

## Informations de base

<b>Numéro de catalogue:</b> 10278-1-AP	<b>Numéro d'acquisition GenBank:</b> BC000341	<b>Méthode de purification:</b> Purification par affinité contre l'antigène
<b>Taille:</b> 150ul , Concentration: 300 µg/ml by Nanodrop and 287 µg/ml by Bradford method using BSA as the standard;	<b>Identification du gène (NCBI):</b> 6746	<b>Dilutions recommandées:</b> WB 1:1000-1:8000 IHC 1:20-1:200 IF 1:50-1:500
<b>Hôte:</b> Lapin	<b>Nom complet:</b> signal sequence receptor, beta (translocon-associated protein beta)	
<b>Isotype:</b> IgG	<b>MW calculé:</b> 20 kDa	
<b>Immunogen Catalog Number:</b> AG0304	<b>MW observés:</b> 22-25 kDa	

## Applications

**Applications testées:**  
FC, IF, IHC, WB, ELISA

**Demandes citées:**  
IHC, IP, WB

**Spécificité de l'espèce:**  
Humain, rat, souris

**Espèces citées:**  
Humain, rat

**Remarque-IHC: il est suggéré de démasquer l'antigène avec un tampon de TE buffer pH 9,0; (\*) A défaut, 'le démasquage de l'antigène peut être 'effectué avec un tampon citrate pH 6,0.**

**Contrôles positifs:**

**WB :** cellules HepG2, cellules L02, tissu hépatique de rat, tissu hépatique de souris

**IHC :** tissu de cancer du sein humain, tissu pancréatique humain

**IF :** cellules HepG2,

## Informations générales

TRAPB (translocon-associated protein subunit beta), also known as SSR2 (signal sequence receptor subunit beta), is a 22-kDa single-spanning membrane glycoprotein of the endoplasmic reticulum (ER) (PMID: 7789174). It is a part of the tetrameric TRAP complex (TRAP-alpha, TRAP-beta, TRAP-delta and TRAP-gamma) which functions in regulating the retention of ER resident proteins (PMID: 7916687). The TRAP complex is also involved in endoplasmic reticulum-associated degradation (ERAD) (PMID: 17380188).

## Publications notables

Autrice	Pubmed ID	Journal	Application
Xiyan Hu	32645369	Mol Cell	WB
Zhibin Liao	33485374	J Exp Clin Cancer Res	WB
Chatchai Phoomak	33523898	Sci Adv	WB

## Stockage

**Stockage:**

Stocker à -20°C. Stable pendant un an après l'expédition.

**Tampon de stockage:**

PBS avec azoture de sodium à 0,02 % et glycérol à 50 % pH 7,3

L'aliquotage n'est pas nécessaire pour le stockage à -20C

\*\*\* Les 20ul contiennent 0,1% de BSA.

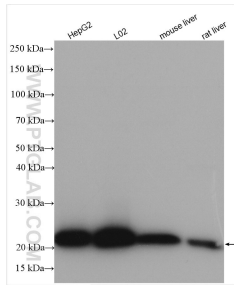
For technical support and original validation data for this product please contact:

T: 1 (888) 4PTGLAB (1-888-478-4522) (toll free in USA), or 1(312) 455-8498 (outside USA)

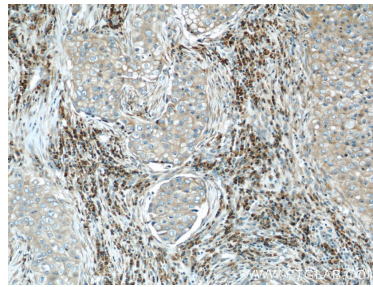
E: proteintech@ptglab.com  
W: ptglab.com

This product is exclusively available under Proteintech Group brand and is not available to purchase from any other manufacturer.

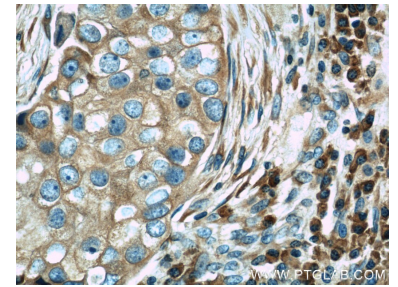
## Données de validation sélectionnées



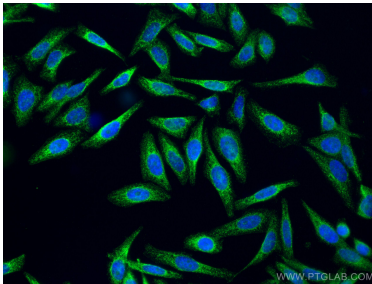
Various lysates were subjected to SDS PAGE followed by western blot with 10278-1-AP (TRAPB/SSR2 antibody) at dilution of 1:4000 incubated at room temperature for 1.5 hours.



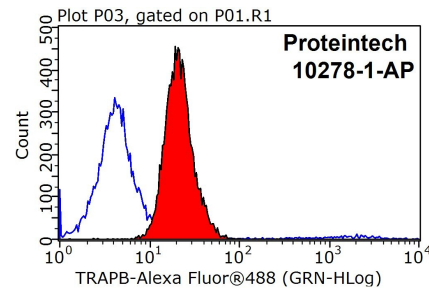
Immunohistochemical analysis of paraffin-embedded human breast cancer using 10278-1-AP (TRAPB/SSR2 antibody) at dilution of 1:50 (under 10x lens).



Immunohistochemical analysis of paraffin-embedded human breast cancer using 10278-1-AP (TRAPB/SSR2 antibody) at dilution of 1:50 (under 40x lens).



Immunofluorescent analysis of (4% PFA) fixed HepG2 cells using TRAPB/SSR2 antibody (10278-1-AP) at dilution of 1:200 and CoraLite@488-Conjugated AffiniPure Goat Anti-Rabbit IgG(H+L).



1x10<sup>6</sup> MCF-7 cells were stained with 0.2ug TRAPB/SSR2 antibody (10278-1-AP, red) and control antibody (blue). Fixed with 90% MeOH blocked with 3% BSA (30 min). Alexa Fluor 488-conjugated AffiniPure Goat Anti-Rabbit IgG(H+L) with dilution 1:1000.