

À des fins de recherche uniquement

Anticorps Polyclonal de lapin anti-Lamin A/C



Numéro de catalogue: 10298-1-AP

Phare

172 Publications

Informations de base

Numéro de catalogue:

10298-1-AP

Taille:

150ul, Concentration: 700 µg/ml by Nanodrop;

Hôte:

Lapin

Isotype:

IgG

Immunogen Catalog Number:

AG0408

Numéro d'acquisition GenBank:

BC003162

Identification du gène (NCBI):

4000

Nom complet:

lamin A/C

MW calculé

65 kDa

MW observés:

65 kDa, 70 kDa

Méthode de purification:

Purification par affinité contre l'antigène

Dilutions recommandées:

WB 1:5000-1:50000

IP 0.5-4.0 ug for IP and 1:500-1:2000 for WB

IF 1:400-1:1600

Applications

Applications testées:

FC, IF, IP, WB, ELISA

Demandes citées:

IF, IHC, IP, WB

Spécificité de l'espèce:

Humain, rat, souris

Espèces citées:

Humain, rat, singe, souris, duck

Contrôles positifs:

WB : cellules A431, cellules A375, cellules C6, cellules HEK-293, cellules HeLa, cellules HUVEC, cellules NIH/3T3, cellules SKOV-3, tissu ovarien de souris

IP : cellules A375,

IF : cellules HepG2, cellules HeLa

Informations générales

Lamin A/C is also named as LMNA, or LMN1. The lamin family of proteins make up the matrix and are highly conserved in evolution. During mitosis, the lamina matrix is reversibly disassembled as the lamin proteins are phosphorylated. Lamin proteins are thought to be involved in nuclear stability, chromatin structure and gene expression. The lack of lamin A/C can be as a novel marker for undifferentiated embryonic stem cells and lamin A/C expression is as an early indicator of differentiation (PMID: 16179429). Mutations in this gene lead to several diseases: Emery-Dreifuss muscular dystrophy, familial partial lipodystrophy, limb girdle muscular dystrophy, dilated cardiomyopathy, Charcot-Marie-Tooth disease, and Hutchinson-Gilford progeria syndrome. This protein has 4 isoforms produced by alternative splicing with the molecular weight of 74 kDa, 65 kDa, 70 kDa and 64 kDa. This antibody can recognize 4 isoforms of Lamin A/C.

Publications notables

Autrice	Pubmed ID	Journal	Application
Qingyang Zhang	34551807	Mol Neurodegener	WB
Fengbo Tan	30218452	J Cell Biochem	WB
Yingjie Liu	34475402	Nat Commun	WB

Stockage

Stockage:

Stocker à -20°C. Stable pendant un an après l'expédition.

Tampon de stockage:

PBS avec azoture de sodium à 0,02 % et glycérol à 50 % pH 7,3

L'aliquotage n'est pas nécessaire pour le stockage à -20C

*** Les 20ul contiennent 0,1% de BSA.

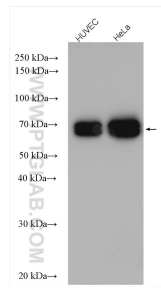
For technical support and original validation data for this product please contact:

T: 1 (888) 4PTGLAB (1-888-478-4522) (toll free in USA), or 1(312) 455-8498 (outside USA)

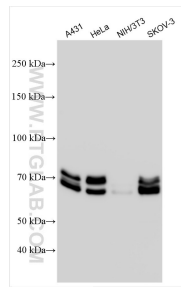
E: proteintech@ptglab.com
W: ptglab.com

This product is exclusively available under Proteintech Group brand and is not available to purchase from any other manufacturer.

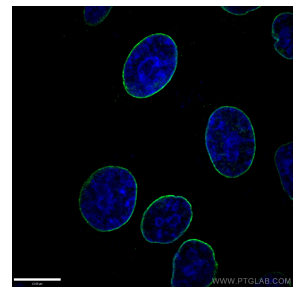
Données de validation sélectionnées



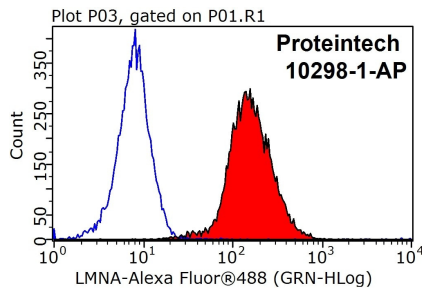
Various lysates were subjected to SDS PAGE followed by western blot with 10298-1-AP (Lamin A/C antibody) at dilution of 1:6000 incubated at room temperature for 1.5 hours.



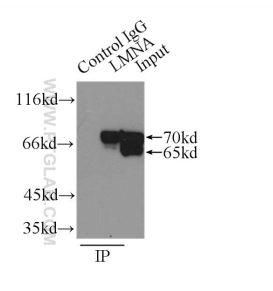
Various lysates were subjected to SDS PAGE followed by western blot with 10298-1-AP (Lamin A/C antibody) at dilution of 1:35000 incubated at room temperature for 1.5 hours.



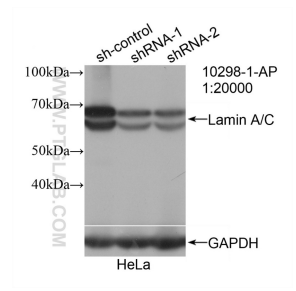
Immunofluorescent analysis of (-20°C Ethanol) fixed HepG2 cells using 10298-1-AP (Lamin A/C antibody) at dilution of 1:200 and Alexa Fluor 488-conjugated AffiniPure Goat Anti-Rabbit IgG(H+L).



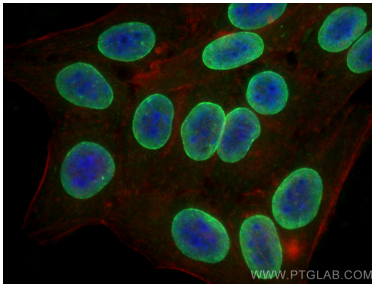
1X10⁶ HEK-293T cells were stained with 0.2ug Lamin A/C antibody (10298-1-AP, red) and control antibody (blue). Fixed with 90% MeOH blocked with 3% BSA (30 min). Alexa Fluor 488-conjugated AffiniPure Goat Anti-Rabbit IgG(H+L) with dilution 1:1000.



IP Result of anti-Lamin-A (IP:10298-1-AP, 3ug; Detection:10298-1-AP 1:1000) with A375 cells lysate 800ug.



WB result of Lamin A/C antibody (10298-1-AP; 1:20000; incubated at room temperature for 1.5 hours) with sh-Control and sh-Lamin A/C transfected HeLa cells.



Immunofluorescent analysis of (-20°C Ethanol) fixed HepG2 cells using Lamin A/C antibody (10298-1-AP) at dilution of 1:800 and CoraLite@488-Conjugated AffiniPure Goat Anti-Rabbit IgG(H+L), CL594-Phalloidin (red).