

À des fins de recherche uniquement

# Anticorps Polyclonal de lapin anti-PLK1



Numéro de catalogue: 10305-1-AP

Phare

20 Publications

## Informations de base

<b>Numéro de catalogue:</b> 10305-1-AP	<b>Numéro d'acquisition GenBank:</b> BC002369	<b>Méthode de purification:</b> Purification par affinité contre l'antigène
<b>Taille:</b> 150ul , Concentration: 450 µg/ml by Nanodrop;	<b>Identification du gène (NCBI):</b> 5347	<b>Dilutions recommandées:</b> WB 1:500-1:2000 IHC 1:50-1:500
<b>Hôte:</b> Lapin	<b>Nom complet:</b> polo-like kinase 1 (Drosophila)	
<b>Isotype:</b> IgG	<b>MW calculé:</b> 68 kDa	
<b>Immunogen Catalog Number:</b> AG0284	<b>MW observés:</b> 68 kDa	

## Applications

**Applications testées:**  
FC (Intra), IHC, WB, ELISA

**Demandes citées:**  
IF, IP, WB

**Spécificité de l'espèce:**  
Humain, rat, souris

**Espèces citées:**  
Humain, rat, souris

**Remarque-IHC: il est suggéré de démasquer l'antigène avec un tampon de TE buffer pH 9,0; (\*) À défaut, 'le démasquage de l'antigène peut être effectué avec un tampon citrate pH 6,0.**

**Contrôles positifs:**

**WB :** cellules MDA-MB-453s, cellules A549, cellules HEK-293, cellules HeLa, cellules U2OS, tissu testiculaire de rat, tissu testiculaire de souris

**IHC :** tissu de cancer de la prostate humain,

## Informations générales

PLK1 (Polo-like kinase 1), also named as PLK and STPK13, belongs to the protein kinase superfamily, Ser/Thr protein kinase family and CDC5/Polo subfamily. PLK1 is a Serine/threonine-protein kinase that performs several important functions throughout M phase of the cell cycle, including the regulation of centrosome maturation and spindle assembly, the removal of cohesins from chromosome arms, the inactivation of APC/C inhibitors, and the regulation of mitotic exit and cytokinesis. The localization of Polo changes during the cell cycle. In interphase, Polo shows a mostly diffuse cytoplasmic localization. Polo becomes concentrated on centrosomes from early prophase and appears on centromeres or kinetochores from late prophase, before nuclear envelope breakdown (NEB). After anaphase onset, Polo relocates to the central spindle and remains enriched at the midbody ring in late stages of cytokinesis (PMID: 29167465).

## Publications notables

Autrice	Pubmed ID	Journal	Application
Rui Song	30405751	Oncol Lett	WB
Menghao Shi	30498349	Int J Nanomedicine	WB,IF
Bin Wang	36410162	Arch Oral Biol	WB

## Stockage

**Stockage:**

Stocker à -20°C. Stable pendant un an après l'expédition.

**Tampon de stockage:**

PBS avec azoture de sodium à 0,02 % et glycérol à 50 % pH 7,3

L'aliquotage n'est pas nécessaire pour le stockage à -20C

\*\*\* Les 20ul contiennent 0,1% de BSA.

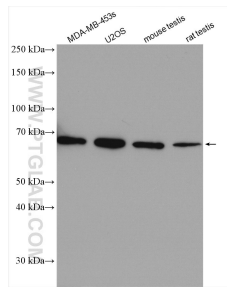
For technical support and original validation data for this product please contact:

T: 1 (888) 4PTGLAB (1-888-478-4522) (toll free in USA), or 1(312) 455-8498 (outside USA)

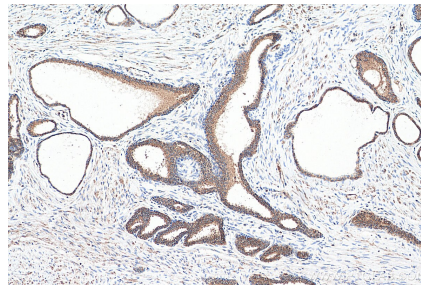
E: [proteintech@ptglab.com](mailto:proteintech@ptglab.com)  
W: [ptglab.com](http://ptglab.com)

This product is exclusively available under Proteintech Group brand and is not available to purchase from any other manufacturer.

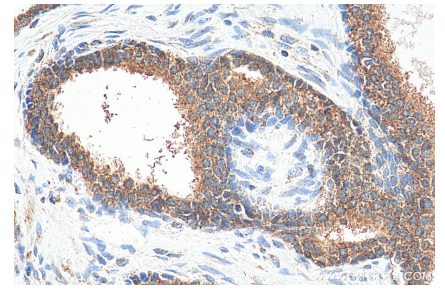
## Données de validation sélectionnées



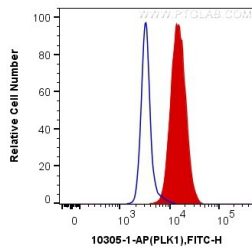
Various lysates were subjected to SDS PAGE followed by western blot with 10305-1-AP (PLK1 antibody) at dilution of 1:1000 incubated at room temperature for 1.5 hours.



Immunohistochemical analysis of paraffin-embedded human prostate cancer tissue slide using 10305-1-AP (PLK1 antibody) at dilution of 1:200 (under 10x lens). Heat mediated antigen retrieval with Tris-EDTA buffer (pH 9.0).



Immunohistochemical analysis of paraffin-embedded human prostate cancer tissue slide using 10305-1-AP (PLK1 antibody) at dilution of 1:200 (under 40x lens). Heat mediated antigen retrieval with Tris-EDTA buffer (pH 9.0).



1X10<sup>6</sup> HeLa cells were intracellularly stained with 0.4 ug Anti-Human PLK1 (10305-1-AP) and CoraLite@488-Conjugated AffiniPure Goat Anti-Rabbit IgG(H+L) at dilution 1:1000 (red), or 0.4 ug Control Antibody. Cells were fixed and permeabilized with Transcription Factor Staining Buffer Kit (PF00011).