

À des fins de recherche uniquement

Anticorps Polyclonal de lapin anti-GPRC5A,RAI3



Numéro de catalogue: 10309-1-AP

Phare

8 Publications

Informations de base

Numéro de catalogue: 10309-1-AP	Numéro d'acquisition GenBank: BC003665	Méthode de purification: Purification par affinité contre l'antigène
Taille: 150ul , Concentration: 240 µg/ml by Nanodrop and 233 µg/ml by Bradford method using BSA as the standard;	Identification du gène (NCBI): 9052	Dilutions recommandées: WB 1:1000-1:6000 IHC 1:50-1:500
Hôte: Lapin	Nom complet: G protein-coupled receptor, family C, group 5, member A	
Isotype: IgG	MW calculé 40 kDa	
Immunogen Catalog Number: AG0311	MW observés: 40-45 kDa	

Applications

Applications testées:

FC, IHC, WB, ELISA

Demandes citées:

IHC, WB

Spécificité de l'espèce:

Humain, souris

Espèces citées:

Chèvre, Humain

Remarque-IHC: il est suggéré de démasquer l'antigène avec un tampon de TE buffer pH 9,0; (*) A défaut, 'le démasquage de l'antigène peut être 'effectué avec un tampon citrate pH 6,0.

Contrôles positifs:

WB : cellules A375, cellules HeLa, cellules MCF-7, cellules RAW 264.7

IHC : tissu de cancer du poumon humain, tissu de cancer du sein humain

Informations générales

GPRC5A, also named as GPCR5A, RAI3 and RAI G1, belongs to the G-protein coupled receptor 3 family. It is an orphan G-protein coupled receptor (GPCR) that has been associated with malignancy and may play a role in the proliferation of breast cancer cells. GPRC5A is a potential molecular target for treatment of breast cancers. It is suppressed in some human lung carcinoma cells. (PMID:15788639, 20563252, 19552806)

Publications notables

Autrice	Pubmed ID	Journal	Application
Er Jin	30655793	Oncol Lett	WB
Yu Chen	36358856	Cancers (Basel)	WB
Jin Er	32410473	Exp Lung Res	WB

Stockage

Stockage:

Stocker à -20°C. Stable pendant un an après l'expédition.

Tampon de stockage:

PBS avec azoture de sodium à 0,02 % et glycérol à 50 % pH 7,3

L'aliquotage n'est pas nécessaire pour le stockage à -20C

*** Les 20ul contiennent 0,1% de BSA.

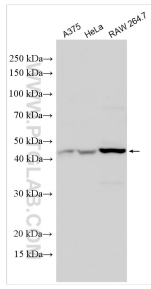
For technical support and original validation data for this product please contact:

T: 1 (888) 4PTGLAB (1-888-478-4522) (toll free in USA), or 1(312) 455-8498 (outside USA)

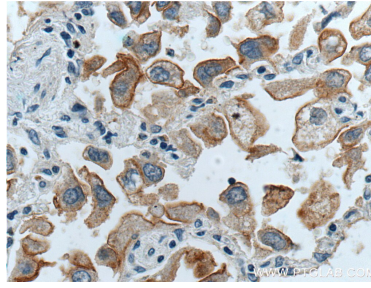
E: proteintech@ptglab.com
W: ptglab.com

This product is exclusively available under Proteintech Group brand and is not available to purchase from any other manufacturer.

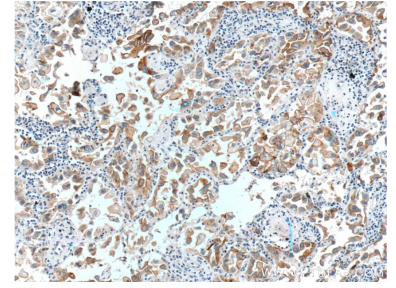
Données de validation sélectionnées



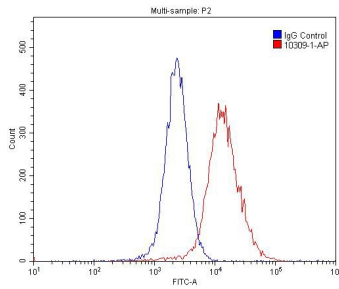
Various lysates were subjected to SDS PAGE followed by western blot with 10309-1-AP (GPRC5A,RAI3 antibody) at dilution of 1:3000 incubated at room temperature for 1.5 hours.



Immunohistochemical analysis of paraffin-embedded human lung cancer tissue slide using 10309-1-AP (GPRC5A,RAI3 Antibody) at dilution of 1:200 (under 40x lens).



Immunohistochemical analysis of paraffin-embedded human lung cancer tissue slide using 10309-1-AP (GPRC5A,RAI3 Antibody) at dilution of 1:200 (under 10x lens).



1×10^6 MCF-7 cells were stained with 0.2ug GPRC5A,RAI3 antibody (10309-1-AP, red) and control antibody (blue). Fixed with 4% PFA blocked with 3% BSA (30 min). Alexa Fluor 488-conjugated AffiniPure Goat Anti-Rabbit IgG(H+L) with dilution 1:1500.