

À des fins de recherche uniquement

# Anticorps Polyclonal de lapin anti-MPV17



Numéro de catalogue: 10310-1-AP

Phare

10 Publications

## Informations de base

Numéro de catalogue:  
10310-1-AP

Taille:  
150ul, Concentration: 700 µg/ml by  
Nanodrop;

Hôte:  
Lapin

Isotype:  
IgG

Immunogen Catalog Number:  
AG0312

Numéro d'acquisition GenBank:  
BC001115

Identification du gène (NCBI):  
4358

Nom complet:  
Mpv17 mitochondrial inner  
membrane protein

MW calculé:  
20 kDa

MW observés:  
20 kDa

Méthode de purification:  
Purification par affinité contre  
l'antigène

Dilutions recommandées:  
WB 1:1000-1:4000  
IF 1:50-1:500

## Applications

Applications testées:  
IF, WB, ELISA

Demandes citées:  
IF, WB

Spécificité de l'espèce:  
Humain, rat, souris

Espèces citées:  
Humain, souris

Contrôles positifs:

WB : cellules A549, cellules HeLa, cellules HepG2, tissu  
cardiaque de rat, tissu cardiaque de souris

IF : cellules HepG2,

## Informations générales

MPV17, also termed as SYM1, encodes an inner mitochondrial membrane protein. It's potential candidate that may account for the mitochondrial (mt) DNA depletion syndromes (MDDS) characterized by a severe, tissue-specific decrease of mtDNA copy number and ultimate organ failure. It's a human ortholog of the mouse kidney disease gene Mpv17. Absence or malfunction of MPV17 causes oxidative phosphorylation (OXPHOS) failure and mtDNA depletion, not only in affected individuals but also in Mpv17<sup>-/-</sup> mice. MPV17 contribute to ROS homeostasis, but the downstream signaling is unknown yet. Catalog# 10310-1-AP is a rabbit polyclonal antibody raised against the full-length of human MPV17.

## Publications notables

Autrice	Pubmed ID	Journal	Application
Morgane Canonne	32155188	PLoS One	WB
Ilaria Dalla Rosa	24948607	Nucleic Acids Res	WB
Gabriela Casalena	24598802	Am J Physiol Renal Physiol	IF

## Stockage

Stockage:

Stocker à -20°C. Stable pendant un an après l'expédition.

Tampon de stockage:

PBS avec azoture de sodium à 0,02 % et glycérol à 50 % pH 7,3

L'aliquotage n'est pas nécessaire pour le stockage à -20C

\*\*\* Les 20ul contiennent 0,1% de BSA.

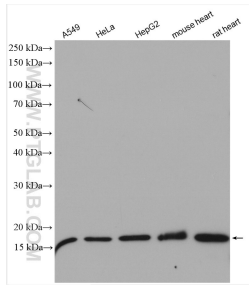
For technical support and original validation data for this product please contact:

T: 1 (888) 4PTGLAB (1-888-478-4522) (toll free  
in USA), or 1(312) 455-8498 (outside USA)

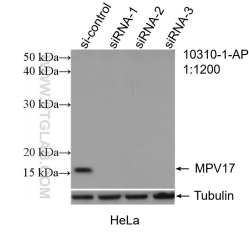
E: proteintech@ptglab.com  
W: ptglab.com

This product is exclusively available under Proteintech Group brand and is not available to purchase from any other manufacturer.

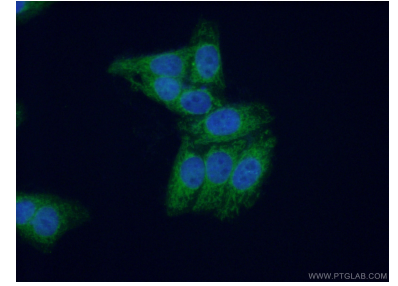
## Données de validation sélectionnées



Various lysates were subjected to SDS PAGE followed by western blot with 10310-1-AP (MPV17 antibody) at dilution of 1:2000 incubated at room temperature for 1.5 hours.



WB result of MPV17 antibody (10310-1-AP; 1:1200; incubated at room temperature for 1.5 hours) with sh-Control and sh-MPV17 transfected HeLa cells.



Immunofluorescent analysis of (4% PFA) fixed HepG2 cells using 10310-1-AP (MPV17 antibody) at dilution of 1:50 and Alexa Fluor 488-conjugated AffiniPure Goat Anti-Rabbit IgG(H+L).