

À des fins de recherche uniquement

Anticorps Polyclonal de lapin anti-CRMP1



Numéro de catalogue: 10317-1-AP

2 Publications

Informations de base

Numéro de catalogue: 10317-1-AP	Numéro d'acquisition GenBank: BC000252	Méthode de purification: Purification par affinité contre l'antigène
Taille: 150ul, Concentration: 450 µg/ml by Nanodrop and 267 µg/ml by Bradford method using BSA as the standard;	Identification du gène (NCBI): 1400	Dilutions recommandées: WB 1:1000-1:4000 IHC 1:50-1:500 IF 1:200-1:800
Hôte: Lapin	Nom complet: collapsin response mediator protein 1	
Isotype: IgG	MW calculé: 62 kDa	
Immunogen Catalog Number: AG0369	MW observés: 62 kDa	

Applications

Applications testées:

IF, IHC, WB, ELISA

Demandes citées:

WB

Spécificité de l'espèce:

Humain, rat, souris

Espèces citées:

Humain, rat

Remarque-IHC: il est suggéré de démasquer l'antigène avec un tampon de TE buffer pH 9,0; (*) A défaut, 'le démasquage de l'antigène peut être 'effectué avec un tampon citrate pH 6,0.

Contrôles positifs:

WB : tissu pulmonaire de souris, tissu cérébral de souris, tissu pulmonaire de rat

IHC : tissu cérébral de souris, tissu cérébral de rat

IF : cellules U2OS,

Informations générales

CRMP1 (Collapsin response mediator protein 1) is also named as DPYSL1, ULIP3, DRP-1 and belongs to the collapsin response mediator protein family, which are a family of five cytoplasmic proteins predominantly expressed in the developing nervous system. CRMP1, the predicted 62-kDa protein and its 75-kDa isoform corresponding to its N-terminal splice variant already described for embryonic, neonatal, and adult brain of the rat are evidenced in the cortex of adult mouse (PMID:15834957). This protein is involved in invasion, and aggressiveness of prolactin pituitary tumors.

Publications notables

Autrice	Pubmed ID	Journal	Application
Wenyou Zhang	36144658	Molecules	WB
Jie Yang	35940284	Chem Biol Interact	WB

Stockage

Stockage:

Stocker à -20°C. Stable pendant un an après l'expédition.

Tampon de stockage:

PBS avec azoture de sodium à 0,02 % et glycérol à 50 % pH 7,3

L'aliquotage n'est pas nécessaire pour le stockage à -20C

*** Les 20ul contiennent 0,1% de BSA.

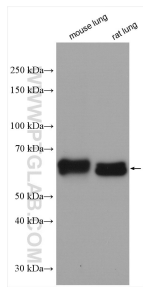
For technical support and original validation data for this product please contact:

T: 1 (888) 4PTGLAB (1-888-478-4522) (toll free in USA), or 1(312) 455-8498 (outside USA)

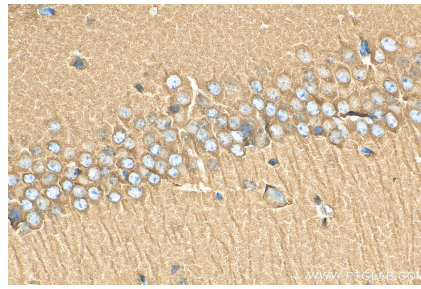
E: proteintech@ptglab.com
W: ptglab.com

This product is exclusively available under Proteintech Group brand and is not available to purchase from any other manufacturer.

Données de validation sélectionnées



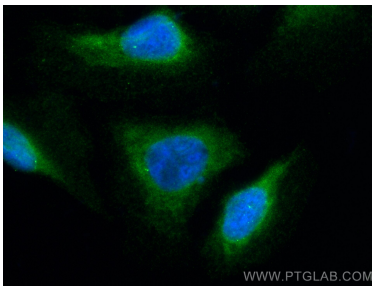
Various lysates were subjected to SDS PAGE followed by western blot with 10317-1-AP (CRMP1 antibody) at dilution of 1:2000 incubated at room temperature for 1.5 hours.



Immunohistochemical analysis of paraffin-embedded mouse brain tissue slide using 10317-1-AP (CRMP1 antibody) at dilution of 1:200 (under 40x lens). Heat mediated antigen retrieval with Tris-EDTA buffer (pH 9.0).



Immunofluorescent analysis of (-20°C Methanol) fixed U2OS cells using CRMP1 antibody (10317-1-AP) at dilution of 1:400 and CoraLite®488-Conjugated AffiniPure Goat Anti-Rabbit IgG(H+L).



Immunofluorescent analysis of (-20°C Methanol) fixed U2OS cells using CRMP1 antibody (10317-1-AP) at dilution of 1:400 and CoraLite®488-Conjugated AffiniPure Goat Anti-Rabbit IgG(H+L).