

À des fins de recherche uniquement

Anticorps Polyclonal de lapin anti-TRAP1



Numéro de catalogue: 10325-1-AP

Phare

10 Publications

Informations de base

Numéro de catalogue: 10325-1-AP	Numéro d'acquisition GenBank: BC000406	Méthode de purification: Purification par affinité contre l'antigène
Taille: 150ul, Concentration: 500 µg/ml by Nanodrop and 320 µg/ml by Bradford method using BSA as the standard;	Identification du gène (NCBI): 10131	Dilutions recommandées: WB 1:1000-1:6000 IHC 1:20-1:200 IF 1:200-1:800
Hôte: Lapin	Nom complet: TNF receptor-associated protein 1	
Isotype: IgG	MW calculé: 80 kDa	
Immunogen Catalog Number: AG0400	MW observés: 66-70 kDa, 60 kDa	

Applications

Applications testées:
FC, IF, IHC, WB, ELISA

Demandes citées:
IF, IHC, WB

Spécificité de l'espèce:
Humain, rat, souris

Espèces citées:
Humain, souris

Remarque-IHC: il est suggéré de démasquer l'antigène avec un tampon de TE buffer pH 9,0; (*) A défaut, 'le démasquage de l'antigène peut être effectué avec un tampon citrate pH 6,0.

Contrôles positifs:

WB: cellules HL-60, cellules HeLa, cellules HepG2, cellules K-562, cellules NIH/3T3, cellules Raji, tissu cardiaque de souris

IHC: tissu cardiaque humain,

IF: cellules HepG2,

Informations générales

TNF receptor-associated protein 1 (TRAP1, synonym: HSP75) is a member of the HSP90 family of molecular chaperones, and is expressed ubiquitously and located to mitochondria. A unique LxCxE motif in HSP75, but not in other HSP90 family members, appears to be important for binding to the simian virus 40 T-antigen-binding domain of hypophosphorylated Rb. Data also suggests that suppression of the expression of TRAP1 in mitochondria plays an important role in the induction of apoptosis caused via formation of reactive oxygen species (ROS).

Publications notables

Autrice	Pubmed ID	Journal	Application
Hongyu Sun	36233059	Int J Mol Sci	WB
Jun Ma	34820015	Oncol Lett	WB
Katsutaka Mitachi	33753854	Sci Rep	IHC

Stockage

Stockage:

Stocker à -20°C. Stable pendant un an après l'expédition.

Tampon de stockage:

PBS avec azoture de sodium à 0,02 % et glycérol à 50 % pH 7,3

L'aliquotage n'est pas nécessaire pour le stockage à -20C

*** Les 20ul contiennent 0,1% de BSA.

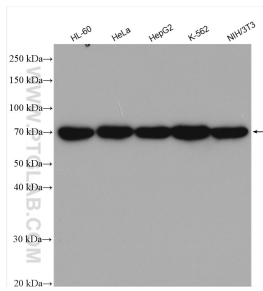
For technical support and original validation data for this product please contact:

T: 1 (888) 4PTGLAB (1-888-478-4522) (toll free in USA), or 1(312) 455-8498 (outside USA)

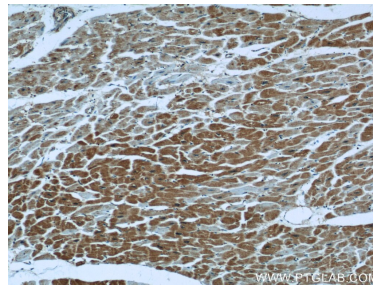
E: proteintech@ptglab.com
W: ptglab.com

This product is exclusively available under Proteintech Group brand and is not available to purchase from any other manufacturer.

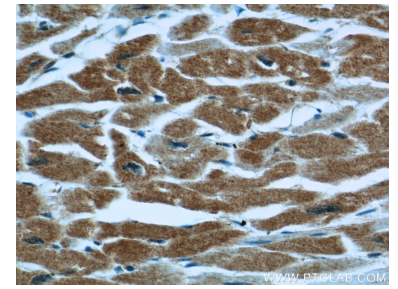
Données de validation sélectionnées



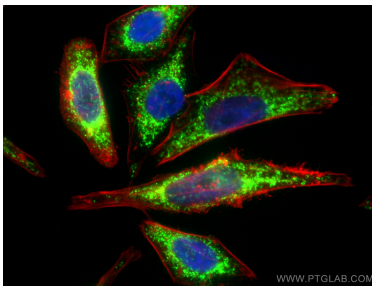
Various lysates were subjected to SDS PAGE followed by western blot with 10325-1-AP (TRAP1 antibody) at dilution of 1:3000 incubated at room temperature for 1.5 hours.



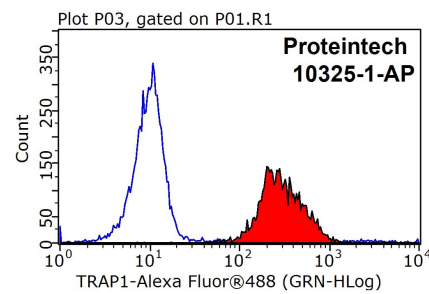
Immunohistochemical analysis of paraffin-embedded human heart using 10325-1-AP (TRAP1 antibody) at dilution of 1:50 (under 10x lens).



Immunohistochemical analysis of paraffin-embedded human heart using 10325-1-AP (TRAP1 antibody) at dilution of 1:50 (under 40x lens).



Immunofluorescent analysis of (4% PFA) fixed HepG2 cells using TRAP1 antibody (10325-1-AP) at dilution of 1:400 and CoraLite@488-Conjugated AffiniPure Goat Anti-Rabbit IgG(H+L).



1x10⁶ HeLa cells were stained with 0.2ug TRAP1 antibody (10325-1-AP, red) and control antibody (blue). Fixed with 90% MeOH blocked with 3% BSA (30 min). Alexa Fluor 488-conjugated AffiniPure Goat Anti-Rabbit IgG(H+L) with dilution 1:1000.