

À des fins de recherche uniquement

Anticorps Polyclonal de lapin anti-NXF1



Numéro de catalogue: 10328-1-AP

Phare

9 Publications

Informations de base

Numéro de catalogue:

10328-1-AP

Taille:

150ul, Concentration: 500 µg/ml by Nanodrop;

Hôte:

Lapin

Isotype:

IgG

Immunogen Catalog Number:

AG0413

Numéro d'acquisition GenBank:

BC004904

Identification du gène (NCBI):

10482

Nom complet:

nuclear RNA export factor 1

MW calculé

70 kDa

MW observés:

66-70 kDa

Méthode de purification:

Purification par affinité contre l'antigène

Dilutions recommandées:

WB 1:500-1:1000

IP 0.5-4.0 ug for IP and 1:500-1:1000 for WB

IF 1:20-1:200

Applications

Applications testées:

IF, IP, WB, ELISA

Demandes citées:

CoIP, IF, IP, WB

Spécificité de l'espèce:

Humain

Espèces citées:

Humain, singe, souris

Contrôles positifs:

WB : cellules HeLa, cellules HEK-293T, cellules HepG2, cellules K-562

IP : cellules HeLa,

IF : cellules HepG2,

Informations générales

Nuclear RNA export factor 1 (NXF1, synonyms: TAP, MEX67) is one member of a family of nuclear RNA export factors. Common domain features of this family are a noncanonical RNP-type RNA-binding domain (RBD), 4 leucine-rich repeats (LRRs), a nuclear transport factor 2 (NTF2)-like domain that allows heterodimerization with NTF2-related export protein-1 (NXT1), and a ubiquitin-associated domain that mediates interactions with nucleoporins. The LRRs and NTF2-like domains are required for export activity. This protein shuttles between the nucleus and the cytoplasm and binds in vivo to poly(A)⁺ RNA. It is the vertebrate homologue of the yeast protein Mex67p. NXF1 overcomes the mRNA export block caused by the presence of saturating amounts of CTE (constitutive transport element) RNA of type D retroviruses. There are some phosphorylation modification sites center on the N-terminal of NXF1.

Publications notables

Autrice	Pubmed ID	Journal	Application
Ke Wang	30194269	J Cell Biol	
Miao Chen	34793452	PLoS Genet	WB
Norihiro Okada	34082065	Gene	WB

Stockage

Stockage:

Stocker à -20°C. Stable pendant un an après l'expédition.

Tampon de stockage:

PBS avec azoture de sodium à 0,02 % et glycérol à 50 % pH 7,3

L'aliquotage n'est pas nécessaire pour le stockage à -20C

*** Les 20ul contiennent 0,1% de BSA.

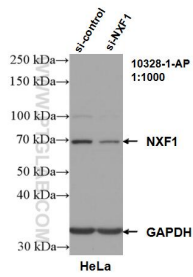
For technical support and original validation data for this product please contact:

T: 1 (888) 4PTGLAB (1-888-478-4522) (toll free in USA), or 1(312) 455-8498 (outside USA)

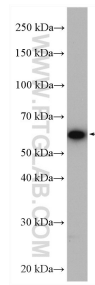
E: proteintech@ptglab.com
W: ptglab.com

This product is exclusively available under Proteintech Group brand and is not available to purchase from any other manufacturer.

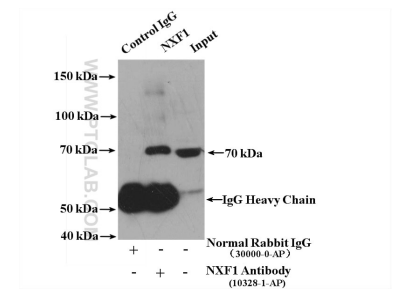
Données de validation sélectionnées



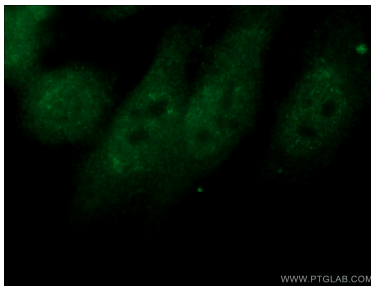
WB result of NXF1 antibody (10328-1-AP; 1:1000; incubated at room temperature for 1.5 hours) with sh-Control and sh-NXF1 transfected HeLa cells.



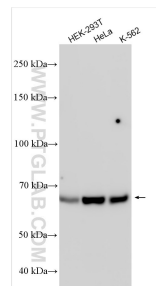
HeLa cells were subjected to SDS PAGE followed by western blot with 10328-1-AP (NXF1 antibody) at dilution of 1:600 incubated at room temperature for 1.5 hours.



IP result of anti-NXF1 (IP:10328-1-AP, 4ug; Detection:10328-1-AP 1:500) with HeLa cells lysate 3000 ug.



Immunofluorescent analysis of HepG2 cells using 10328-1-AP (NXF1 antibody) at dilution of 1:50 and Alexa Fluor 488-conjugated AffiniPure Goat Anti-Rabbit IgG(H+L).



Various lysates were subjected to SDS PAGE followed by western blot with 10328-1-AP (NXF1 antibody) at dilution of 1:1000 incubated at room temperature for 1.5 hours.