

À des fins de recherche uniquement

# Anticorps Polyclonal de lapin anti-U2AF35



Numéro de catalogue: 10334-1-AP

Phare

8 Publications

## Informations de base

Numéro de catalogue: 10334-1-AP	Numéro d'acquisition GenBank: BC001923	Méthode de purification: Purification par affinité contre l'antigène
Taille: 150ul , Concentration: 350 µg/ml by Nanodrop and 187 µg/ml by Bradford method using BSA as the standard;	Identification du gène (NCBI): 7307	Dilutions recommandées: WB 1:500-1:2000 IHC 1:20-1:200
Hôte: Lapin	Nom complet: U2 small nuclear RNA auxiliary factor 1	
Isotype: IgG	MW calculé: 28 kDa	
Immunogen Catalog Number: AG0399	MW observés: 35 kDa	

## Applications

### Applications testées:

IHC, WB, ELISA

### Demandes citées:

WB

### Spécificité de l'espèce:

Humain

### Espèces citées:

Humain

**Remarque-IHC: il est suggéré de démasquer l'antigène avec un tampon de TE buffer pH 9.0; (\*) A défaut, 'le démasquage de l'antigène peut être 'effectué avec un tampon citrate pH 6,0.**

### Contrôles positifs:

WB : cellules COLO 320, cellules HeLa

IHC : tissu de cancer de la prostate humain,

## Informations générales

U2 auxiliary factor (U2AF), comprising a large and a small subunit, is a non-snRNP protein required for the binding of U2 snRNP to the pre-mRNA branch site. U2 (RNU2) small nuclear RNA auxiliary factor 1 (U2AF1, synonyms: RN, FP793, U2AF35, U2AFBP, RNU2AF1) is the small subunit which plays a critical role in both constitutive and enhancer-dependent RNA splicing by directly mediating interactions between the large subunit and proteins bound to the enhancers. The U2AF1 gene is localized to chromosome 21q22.3, which is the critical region for three diseases, progressive myoclonus epilepsy, autoimmune polyglandular disease type 1, and one form of bipolar affective disorder.

## Publications notables

Autrice	Pubmed ID	Journal	Application
Tatiana Kováčová	32911621	Int J Mol Sci	WB
Jana Kralovicova	20628762	Hum Genet	WB
Sung Mi Park	27184077	Mol Cell	WB

## Stockage

### Stockage:

Stocker à -20°C. Stable pendant un an après l'expédition.

### Tampon de stockage:

PBS avec azoture de sodium à 0,02 % et glycérol à 50 % pH 7,3

L'aliquoteage n'est pas nécessaire pour le stockage à -20C

\*\*\* Les 20ul contiennent 0,1% de BSA.

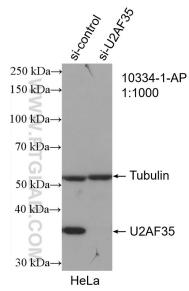
For technical support and original validation data for this product please contact:

T: 1 (888) 4PTGLAB (1-888-478-4522) (toll free in USA), or 1(312) 455-8498 (outside USA)

E: proteintech@ptglab.com  
W: ptglab.com

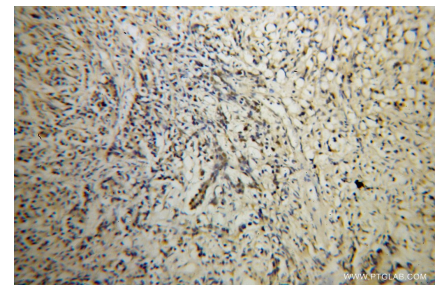
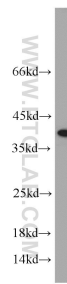
This product is exclusively available under Proteintech Group brand and is not available to purchase from any other manufacturer.

## Données de validation sélectionnées

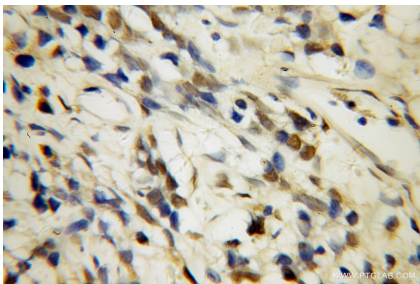


WB result of U2AF35 antibody (10334-1-AP; 1:1000; incubated at room temperature for 1.5 hours) with sh-Control and sh-U2AF35 transfected HeLa cells.

COLO 320 cells were subjected to SDS PAGE followed by western blot with 10334-1-AP (U2AF35 antibody) at dilution of 1:1000 incubated at room temperature for 1.5 hours.



Immunohistochemical analysis of paraffin-embedded human prostate cancer using 10334-1-AP (U2AF35 antibody) at dilution of 1:100 (under 10x lens).



Immunohistochemical analysis of paraffin-embedded human prostate cancer using 10334-1-AP (U2AF35 antibody) at dilution of 1:100 (under 40x lens).