

À des fins de recherche uniquement

Anticorps Polyclonal de lapin anti-PAX8



Numéro de catalogue: 10336-1-AP

Phare

466 Publications

Informations de base

Numéro de catalogue: 10336-1-AP	Numéro d'acquisition GenBank: BC001060	Méthode de purification: Purification par affinité contre l'antigène
Taille: 150ul , Concentration: 500 µg/ml by Nanodrop;	Identification du gène (NCBI): 7849	Dilutions recommandées: WB 1:2000-1:10000 IHC 1:1000-1:5000 IF 1:50-1:500
Hôte: Lapin	Nom complet: paired box 8	
Isotype: IgG	MW calculé: 48 kDa	
Immunogen Catalog Number: AG0306	MW observés: 48 kDa, 58 kDa	

Applications

Applications testées:

IF, IHC, WB, ELISA

Demandes citées:

CoIP, ELISA, FC, IF, IHC, WB

Spécificité de l'espèce:

Humain, rat, souris

Espèces citées:

bovin, Humain, poisson-zèbre, porc, rat, souris

Remarque-IHC: il est suggéré de démasquer l'antigène avec un tampon de TE buffer pH 9,0; (*) À défaut, 'le démasquage de l'antigène peut être 'effectué avec un tampon citrate pH 6,0.

Contrôles positifs:

WB : cellules SKOV-3, cellules HEK-293, cellules NIH/3T3, cellules Raji

IHC : tissu de tumeur ovarienne humain, tissu de cancer de la thyroïde humain, tissu de carcinome à cellules rénales humain, tissu rénal de souris

IF : cellules SKOV-3, tissu rénal de souris

Informations générales

PAX8 is a member of the paired box (PAX) family of transcription factors, typically containing a paired box domain and a paired-type homeodomain. It is expressed during organogenesis of the thyroid gland, kidney and Mullerian system. It is thought to regulate the expression of Wilms tumor suppressor (WT1) gene and mutations in PAX8 have been associated with Wilms tumor cells, thyroid and ovarian carcinomas. PAX8 is a useful marker in distinguishing ovarian carcinomas from mammary carcinomas (PMID: 18724243). PAX8 is expressed in a high percentage of ovarian serous, endometrioid, and clear cell carcinomas, but only rarely in primary ovarian mucinous adenocarcinomas.

This antibody can detect all 5 isoforms of PAX8 (31 kDa, 34 kDa, 41 kDa, 43 kDa and 48 kDa). A 58-60 kDa form has also been reported (PMID:15650356, 1049952). Proteintech's 10336-1-AP antibody has cross-reactivities with the other PAX family members.

Publications notables

Autrice	Pubmed ID	Journal	Application
Yong Kyun Kim	28905451	Stem Cells	IF
Olga Kondrashova	30266954	Nat Commun	IHC
B Ilhan	27765277	Curr Res Transl Med	IHC

Stockage

Stockage:

Stocker à -20°C. Stable pendant un an après l'expédition.

Tampon de stockage:

PBS avec azoture de sodium à 0,02 % et glycérol à 50 % pH 7,3

L'aliquotage n'est pas nécessaire pour le stockage à -20C

*** Les 20ul contiennent 0,1% de BSA.

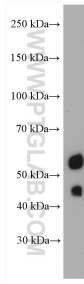
For technical support and original validation data for this product please contact:

T: 1 (888) 4PTGLAB (1-888-478-4522) (toll free in USA), or 1(312) 455-8498 (outside USA)

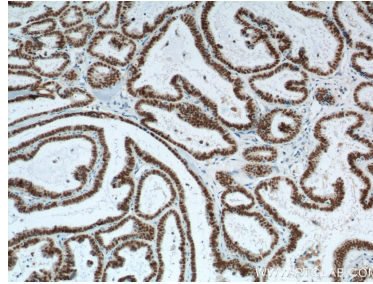
E: proteintech@ptglab.com
W: ptglab.com

This product is exclusively available under Proteintech Group brand and is not available to purchase from any other manufacturer.

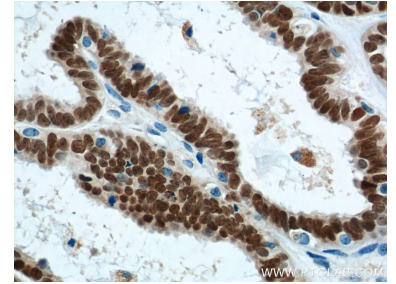
Données de validation sélectionnées



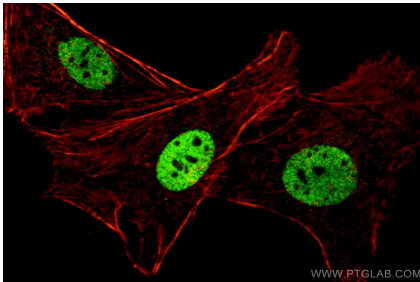
SKOV-3 cells were subjected to SDS PAGE followed by western blot with 10336-1-AP (PAX8 antibody) at dilution of 1:5000 incubated at room temperature for 1.5 hours.



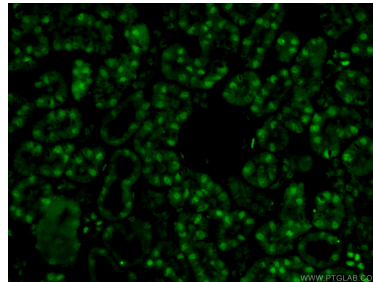
Immunohistochemical analysis of paraffin-embedded human ovary tumor tissue slide using 10336-1-AP (PAX8 Antibody) at dilution of 1:1200 (under 10x lens). Heat mediated antigen retrieval with Tris-EDTA buffer (pH 9.0).



Immunohistochemical analysis of paraffin-embedded human ovary tumor tissue slide using 10336-1-AP (PAX8 Antibody) at dilution of 1:1200 (under 40x lens). Heat mediated antigen retrieval with Tris-EDTA buffer (pH 9.0).



Confocal immunofluorescent analysis of (4% PFA) fixed SKOV-3 cells using 10336-1-AP (PAX8 antibody) at dilution of 1:100 and CoraLite488-Conjugated AffiniPure Goat Anti-Rabbit IgG(H+L). Phalloidin stains F-actin (Red).



Immunofluorescent analysis of (4% PFA) fixed mouse kidney tissue using 10336-1-AP (PAX8 antibody) at dilution of 1:50 and CoraLite488-Conjugated AffiniPure Goat Anti-Rabbit IgG(H+L).