

À des fins de recherche uniquement

Anticorps Polyclonal de lapin anti-Melanophilin



Numéro de catalogue: 10338-1-AP

Phare

16 Publications

Informations de base

Numéro de catalogue:
10338-1-AP

Taille:
150ul, Concentration: 800 µg/ml by Nanodrop and 367 µg/ml by Bradford method using BSA as the standard;

Hôte:
Lapin

Isotype:
IgG

Immunogen Catalog Number:
AG0316

Numéro d'acquisition GenBank:
BC001653

Identification du gène (NCBI):
79083

Nom complet:
melanophilin

MW calculé
66 kDa

MW observés:
66 kDa, 80 kDa

Méthode de purification:
Purification par affinité contre l'antigène

Dilutions recommandées:
WB 1:500-1:1000
IP 0.5-4.0 ug for IP and 1:500-1:1000 for WB
IHC 1:50-1:500
IF 1:20-1:200

Applications

Applications testées:
IF, IHC, IP, WB, ELISA

Demandes citées:
IF, IHC, IP, WB

Spécificité de l'espèce:
Humain

Espèces citées:
Humain, souris

Remarque-IHC: il est suggéré de démasquer l'antigène avec un tampon de TE buffer pH 9,0; (*) A défaut, 'le démasquage de l'antigène peut être 'effectué avec un tampon citrate pH 6,0.

Contrôles positifs:

WB: cellules A375,

IP: cellules A375,

IHC: tissu de cancer de la peau humain,

IF: cellules HeLa, cellules MCF-7

Informations générales

Melanophilin (Mlph) is a member of the exophilin subfamily of Rab effector proteins. MLPH is a modular protein, forming a ternary complex with the small Ras-related GTPase Rab27A in its GTP-bound form and the motor protein myosin Va. It regulates retention of melanosomes at the peripheral actin cytoskeleton of melanocytes, a process essential for normal mammalian pigmentation. Defects in MLPH are a cause of Griscelli syndrome type 3 (GS3), which is characterized by a silver-gray hair color and abnormal pigment distribution in the hair shaft.

Publications notables

Autrice	Pubmed ID	Journal	Application
Valentina Cetica	25312756	J Allergy Clin Immunol	WB, IP
Jacob Wang	19468668	J Gastroenterol	IHC
Qiaorong Huang	35602484	Front Med (Lausanne)	WB

Stockage

Stockage:

Stocker à -20°C. Stable pendant un an après l'expédition.

Tampon de stockage:

PBS avec azoture de sodium à 0,02 % et glycérol à 50 % pH 7,3

L'aliquotage n'est pas nécessaire pour le stockage à -20C

*** Les 20ul contiennent 0,1% de BSA.

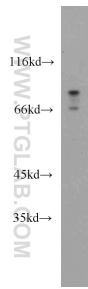
For technical support and original validation data for this product please contact:

T: 1 (888) 4PTGLAB (1-888-478-4522) (toll free in USA), or 1(312) 455-8498 (outside USA)

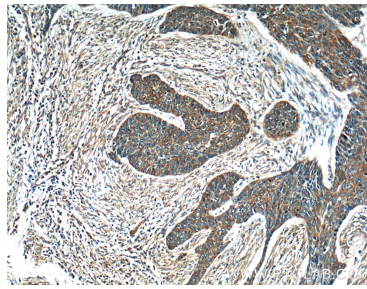
E: proteintech@ptglab.com
W: ptglab.com

This product is exclusively available under Proteintech Group brand and is not available to purchase from any other manufacturer.

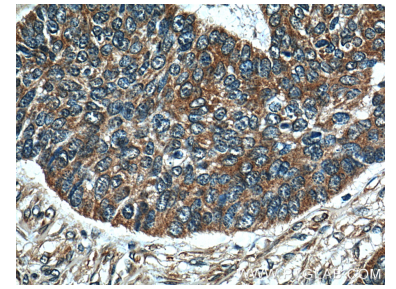
Données de validation sélectionnées



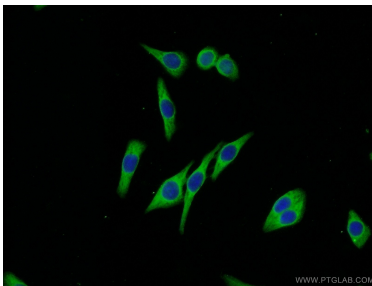
A375 cells were subjected to SDS PAGE followed by western blot with 10338-1-AP (Melanophilin antibody) at dilution of 1:1000 incubated at room temperature for 1.5 hours.



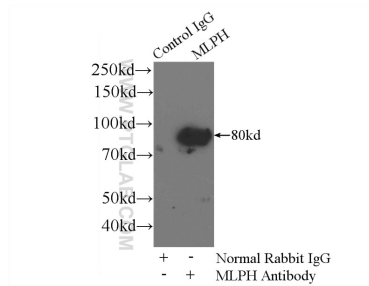
Immunohistochemical analysis of paraffin-embedded human skin cancer tissue slide using 10338-1-AP (Melanophilin antibody at dilution of 1:200 (under 10x lens).



Immunohistochemical analysis of paraffin-embedded human skin cancer tissue slide using 10338-1-AP (Melanophilin antibody at dilution of 1:200 (under 40x lens).



Immunofluorescent analysis of (-20°C Ethanol) fixed HeLa cells using 10338-1-AP (Melanophilin antibody) at dilution of 1:50 and Alexa Fluor 488-conjugated AffiniPure Goat Anti-Rabbit IgG(H+L).



IP Result of anti-Melanophilin (IP:10338-1-AP, 4ug; Detection:10338-1-AP 1:600) with A375 cells lysate 3600ug.