

À des fins de recherche uniquement

Anticorps Polyclonal de lapin anti-RAB6B



Numéro de catalogue: 10340-1-AP

3 Publications

Informations de base

Numéro de catalogue:
10340-1-AP

Taille:
150ul, Concentration: 450 µg/ml by Nanodrop and 233 µg/ml by Bradford method using BSA as the standard;

Hôte:
Lapin

Isotype:
IgG

Immunogen Catalog Number:
AG0322

Numéro d'acquisition GenBank:
BC002510

Identification du gène (NCBI):
51560

Nom complet:
RAB6B, member RAS oncogene family

MW calculé
23 kDa

MW observés:
24 kDa

Méthode de purification:
Purification par affinité contre l'antigène

Dilutions recommandées:
WB 1:500-1:2000
IP 0.5-4.0 ug for IP and 1:500-1:2000 for WB
IHC 1:20-1:200
IF 1:10-1:100

Applications

Applications testées:
IF, IHC, IP, WB, ELISA

Demandes citées:
IF, WB

Spécificité de l'espèce:
Humain, rat, souris

Espèces citées:
rat, souris

Contrôles positifs:

WB : tissu cérébral de souris, cellules C6, tissu cérébral de rat

IP : tissu cérébral de souris,

IHC : tissu de gliome humain,

IF : cellules C6,

Remarque-IHC: il est suggéré de démasquer l'antigène avec un tampon de TE buffer pH 9,0; (*) A défaut, 'le démasquage de l'antigène peut être effectué avec un tampon citrate pH 6,0.

Informations générales

The human RAB genes share structural and biochemical properties with the Ras gene superfamily. Accumulating data suggests an important role for RAB proteins either in endocytosis or in biosynthetic protein transport. The transport of newly synthesized proteins from endoplasmic reticulum to the Golgi complex and to secretory vesicles involves the movement of carrier vesicles, a process that appears to involve RAB protein function. Rab6A has been shown to be a regulator of membrane traffic from the Golgi apparatus towards the endoplasmic reticulum (ER). Rab6B is encoded by an independent gene which is located on chromosome 3 region q21-q23. In contrast to Rab6A whose expression is ubiquitous, Rab6B is expressed in a tissue and cell-type specific manner. Rab6B is predominantly expressed in brain and the neuroblastoma cells. In brain, Rab6B was found to be specifically expressed in microglia, pericytes and Purkinje cells. Endogenous Rab6B localises to the Golgi apparatus and to ERGIC-53-positive vesicles. Comparable studies between Rab6A and Rab6B revealed distinct biochemical and cellular properties. Rab6B displays lower GTP-binding activities and is distributed over Golgi and ER membranes, whereas Rab6A is more restricted to the Golgi apparatus. Since the GTP-bound form of Rab6B does interact with all known Rab6A effectors, including Rabkinesin-6, the results suggest a cell-type specific role for Rab6B in retrograde membrane traffic at the level of the Golgi complex.

Publications notables

Autrice	Pubmed ID	Journal	Application
Elisa Ghelfi	29760588	Proteome Sci	WB
Liyuan Guo	34332492	J Neuroimmunol	IF
Sabine Bardin	35979738	EMBO Rep	WB

Stockage

Stockage:

Stocker à -20°C. Stable pendant un an après l'expédition.

Tampon de stockage:

PBS avec azoture de sodium à 0,02 % et glycérol à 50 % pH 7,3

L'aliquotage n'est pas nécessaire pour le stockage à -20C

*** Les 20ul contiennent 0,1% de BSA.

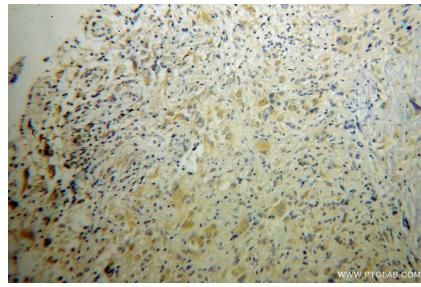
For technical support and original validation data for this product please contact:
T: 1 (888) 4PTGLAB (1-888-478-4522) (toll free in USA), or 1(312) 455-8498 (outside USA)
E: proteintech@ptglab.com
W: ptglab.com

This product is exclusively available under Proteintech Group brand and is not available to purchase from any other manufacturer.

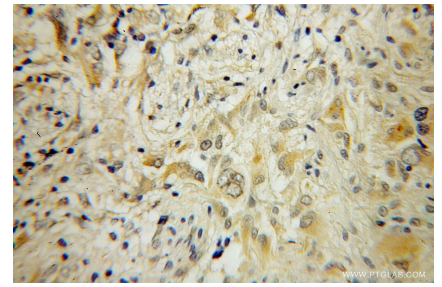
Données de validation sélectionnées



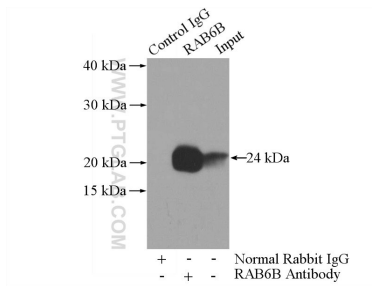
mouse brain tissue were subjected to SDS PAGE followed by western blot with 10340-1-AP (RAB6B antibody) at dilution of 1:1000 incubated at room temperature for 1.5 hours.



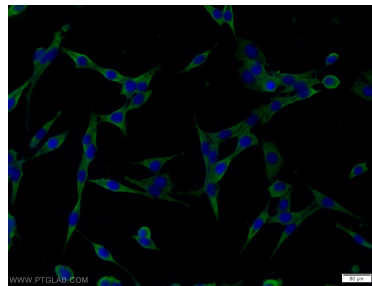
Immunohistochemical analysis of paraffin-embedded human gliomas using 10340-1-AP (RAB6B antibody) at dilution of 1:50 (under 10x lens).



Immunohistochemical analysis of paraffin-embedded human gliomas using 10340-1-AP (RAB6B antibody) at dilution of 1:50 (under 40x lens).



IP Result of anti-RAB6B (IP:10340-1-AP, 3ug; Detection:10340-1-AP 1:1000) with mouse brain tissue lysate 4000ug.



Immunofluorescent analysis of C6 cells using 10340-1-AP (RAB6B antibody) at dilution of 1:25 and Alexa Fluor 488-conjugated AffiniPure Goat Anti-Rabbit IgG(H+L).