

À des fins de recherche uniquement

Anticorps Polyclonal de lapin anti- ACTL6A



Numéro de catalogue: 10341-1-AP

5 Publications

Informations de base

Numéro de catalogue:
10341-1-AP

Taille:
150ul, Concentration: 350 µg/ml by
Nanodrop and 193 µg/ml by Bradford
method using BSA as the standard;

Hôte:
Lapin

Isotype:
IgG

Immunogen Catalog Number:
AG0323

Numéro d'acquisition GenBank:
BC001391

Identification du gène (NCBI):
86

Nom complet:
actin-like 6A

MW calculé
47 kDa

MW observés:
45-51 kDa

Méthode de purification:
Purification par affinité contre
l'antigène

Dilutions recommandées:
WB 1:2000-1:16000
IP 0.5-4.0 ug for IP and 1:500-1:1000
for WB
IHC 1:50-1:500

Applications

Applications testées:
IHC, IP, WB, ELISA

Demandes citées:
IF, IHC, WB

Spécificité de l'espèce:
Humain, rat, souris

Espèces citées:
Humain, souris

**Remarque-IHC: il est suggéré de démasquer
l'antigène avec un tampon de TE buffer pH
9,0; (*) A défaut, 'le démasquage de
l'antigène peut être 'effectué avec un
tampon citrate pH 6,0.**

Contrôles positifs:

WB : cellules HeLa, cellules K-562, cellules MCF-7

IP : cellules HeLa,

IHC : tissu de cancer du poumon humain, tissu de
cancer de la peau humain

Informations générales

Actin-like 6A (ACTL6A, synonyms: ACTL6, BAF53A, MGC5382) is a family member of actin-related proteins (ARPs), which share significant amino acid sequence identity to conventional actins. Both actins and ARPs have an actin fold, which is an ATP-binding cleft, as a common feature. The ARPs are involved in diverse cellular processes, including vesicular transport, spindle orientation, nuclear migration and chromatin remodeling. ACTL6A is a 53 kDa subunit protein of the BAF (BRG1/brm-associated factor) complex in mammals, which is functionally related to SWI/SNF complex in *S. cerevisiae* and *Drosophila*; the latter is thought to facilitate transcriptional activation of specific genes by antagonizing chromatin-mediated transcriptional repression. Together with beta-actin, it is required for maximal ATPase activity of BRG1, and for the association of the BAF complex with chromatin/matrix.

Publications notables

Autrice	Pubmed ID	Journal	Application
Xing Wang	36159747	Stem Cells Int	WB,IHC,IF
Zhuo-Xian Meng	26586440	Cell Rep	WB
Yanying Wang	31334575	EMBO J	WB

Stockage

Stockage:

Stocker à -20°C. Stable pendant un an après l'expédition.

Tampon de stockage:

PBS avec azoture de sodium à 0,02 % et glycérol à 50 % pH 7,3

L'aliquotage n'est pas nécessaire pour le stockage à -20C

*** Les 20ul contiennent 0,1% de BSA.

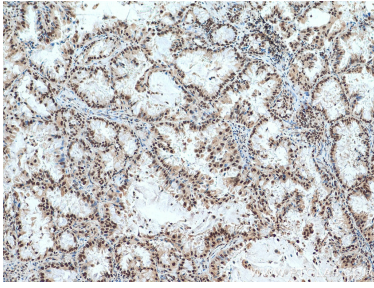
For technical support and original validation data for this product please contact:

T: 1 (888) 4PTGLAB (1-888-478-4522) (toll free
in USA), or 1(312) 455-8498 (outside USA)

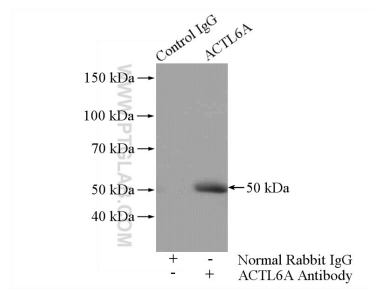
E: proteintech@ptglab.com
W: ptglab.com

This product is exclusively available under Proteintech Group brand and is not available to purchase from any other manufacturer.

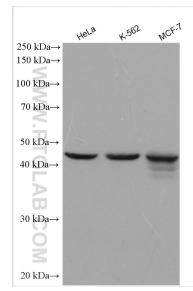
Données de validation sélectionnées



Immunohistochemical analysis of paraffin-embedded human lung cancer tissue slide using 10341-1-AP (ACTL6A antibody) at dilution of 1:200 (under 10x lens). Heat mediated antigen retrieval with Tris-EDTA buffer (pH 9.0).



IP Result of anti-ACTL6A (IP:10341-1-AP, 4ug; Detection:10341-1-AP 1:500) with HeLa cells lysate 1200ug.



Various lysates were subjected to SDS PAGE followed by western blot with 10341-1-AP (ACTL6A antibody) at dilution of 1:8000 incubated at room temperature for 1.5 hours.