

À des fins de recherche uniquement

# Anticorps Polyclonal de lapin anti-CD320



Numéro de catalogue: 10343-1-AP

Phare

7 Publications

## Informations de base

Numéro de catalogue:

10343-1-AP

Taille:

150ul, Concentration: 213 µg/ml by Nanodrop;

Hôte:

Lapin

Isotype:

IgG

Immunogen Catalog Number:

AG0344

Numéro d'acquisition GenBank:

BC000668

Identification du gène (NCBI):

51293

Nom complet:

CD320 molecule

MW calculé

29 kDa

MW observés:

60-70 kDa, 58 kDa

Méthode de purification:

Purification par affinité contre l'antigène

Dilutions recommandées:

WB 1:500-1:3000

IHC 1:500-1:2000

## Applications

Applications testées:

FC, IHC, WB, ELISA

Demandes citées:

IF, IHC, WB

Spécificité de l'espèce:

Humain, souris

Espèces citées:

canin, Humain, rat, souris

Contrôles positifs:

WB : cellules HL-60, cellules HEK-293, cellules Raji, tissu cardiaque de souris, tissu hépatique humain, tissu placentaire humain

IHC : tissu rénal de souris, tissu d'amygdalite humain

**Remarque-IHC: il est suggéré de démasquer l'antigène avec un tampon de TE buffer pH 9,0; (\*) À défaut, le démasquage de l'antigène peut être effectué avec un tampon citrate pH 6,0.**

## Informations générales

CD320, also known as 8D6, 8D6A or TCbLR, is a single-pass type I membrane protein containing 2 LDL-receptor class A domains. Expressed abundantly on follicular dendritic cells (FDCs), CD320 has been shown to enhance proliferation of germinal center (GC) B cells. It is the receptor for cellular uptake of transcobalamin-bound cobalamin. Defects in CD320 are the cause of methylmalonic aciduria type TCbLR (MMATC). CD320 has a calculated molecular mass of 29 kDa. This antibody raised against 84-280aa of human CD320 protein detects bands at 58 kDa and 60-70 kDa. The aberrant mobility of the protein by SDS-PAGE is probably caused by extensive complex glycosylation (PMID: 18779389; 23415653).

## Publications notables

Autrice	Pubmed ID	Journal	Application
Yuri Kinoshita	29966424	Mol Pharm	
Yue Chen	34998874	Int J Biol Macromol	IF
David J Elzi	33629776	FASEB J	WB,IF

## Stockage

Stockage:

Stocker à -20°C. Stable pendant un an après l'expédition.

Tampon de stockage:

PBS avec azoture de sodium à 0,02 % et glycérol à 50 % pH 7,3

L'aliquotage n'est pas nécessaire pour le stockage à -20C

\*\*\* Les 20ul contiennent 0,1% de BSA.

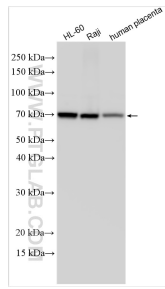
For technical support and original validation data for this product please contact:

T: 1 (888) 4PTGLAB (1-888-478-4522) (toll free in USA), or 1(312) 455-8498 (outside USA)

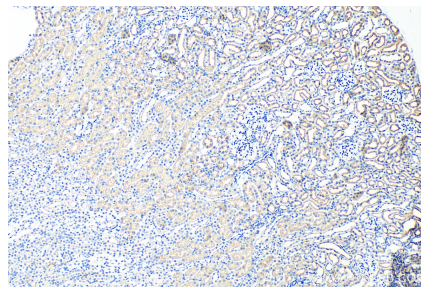
E: proteintech@ptglab.com  
W: ptglab.com

This product is exclusively available under Proteintech Group brand and is not available to purchase from any other manufacturer.

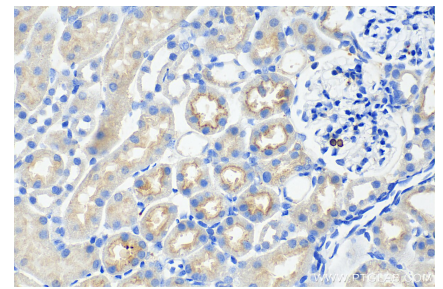
## Données de validation sélectionnées



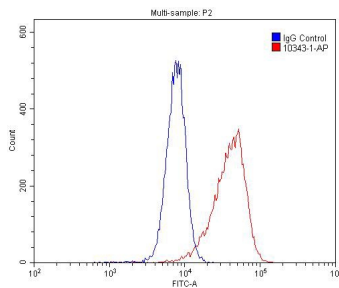
Various lysates were subjected to SDS PAGE followed by western blot with 10343-1-AP (CD320 antibody) at dilution of 1:1500 incubated at room temperature for 1.5 hours.



Immunohistochemical analysis of paraffin-embedded mouse kidney tissue slide using 10343-1-AP (CD320 antibody) at dilution of 1:1000 (under 10x lens). Heat mediated antigen retrieval with Tris-EDTA buffer (pH 9.0).



Immunohistochemical analysis of paraffin-embedded mouse kidney tissue slide using 10343-1-AP (CD320 antibody) at dilution of 1:1000 (under 40x lens). Heat mediated antigen retrieval with Tris-EDTA buffer (pH 9.0).



1X10<sup>6</sup> HL-60 cells were stained with 0.2ug CD320 antibody (10343-1-AP, red) and control antibody (blue). Fixed with 4% PFA blocked with 3% BSA (30 min). Alexa Fluor 488-conjugated AffiniPure Goat Anti-Rabbit IgG(H+L) with dilution 1:1500.