

À des fins de recherche uniquement

Anticorps Polyclonal de lapin anti-RNH1



Numéro de catalogue: 10345-1-AP

Phare

11 Publications

Informations de base

Numéro de catalogue:

10345-1-AP

Taille:

150ul, Concentration: 700 µg/ml by Nanodrop;

Hôte:

Lapin

Isotype:

IgG

Immunogen Catalog Number:

AG0350

Numéro d'acquisition GenBank:

BC000677

Identification du gène (NCBI):

6050

Nom complet:

ribonuclease/angiogenin inhibitor 1

MW calculé

50 kDa

MW observés:

45-50 kDa

Méthode de purification:

Purification par affinité contre l'antigène

Dilutions recommandées:

WB 1:2000-1:10000

IP 0.5-4.0 ug for IP and 1:500-1:1000 for WB

IHC 1:50-1:500

IF 1:200-1:800

Applications

Applications testées:

FC, IF, IHC, IP, WB, ELISA

Demandes citées:

IF, IHC, WB

Spécificité de l'espèce:

Humain, souris

Espèces citées:

Humain, souris

Contrôles positifs:

WB : cellules HEK-293T, cellules HeLa, cellules HepG2, cellules Jurkat, cellules LO2, tissu cardiaque humain, tissu cérébral humain, tissu hépatique humain, tissu placentaire humain

IP : tissu hépatique de souris,

IHC : tissu hépatique de souris,

IF : cellules MCF-7,

Remarque-IHC: il est suggéré de démasquer l'antigène avec un tampon de TE buffer pH 9,0; (*) À défaut, le démasquage de l'antigène peut être effectué avec un tampon citrate pH 6,0.

Informations générales

Ribonuclease/ angiogenin inhibitor (RNH, synonyms: RAI, MGC4569, MGC18200, MGC54054) is a protein that binds tightly to ribonucleases in cells and may be essential in the control of mRNA degradation and gene expression. The human RNH gene has been regionally localized to chromosome band 11p15 by in situ hybridization.

Publications notables

Autrice	Pubmed ID	Journal	Application
Yasutoshi Akiyama	36361884	Int J Mol Sci	WB
Yasutoshi Akiyama	35300117	Front Mol Biosci	WB
Shozo Honda	26124144	Proc Natl Acad Sci U S A	WB

Stockage

Stockage:

Stocker à -20°C. Stable pendant un an après l'expédition.

Tampon de stockage:

PBS avec azoture de sodium à 0,02 % et glycérol à 50 % pH 7,3

L'aliquotage n'est pas nécessaire pour le stockage à -20C

*** Les 20ul contiennent 0,1% de BSA.

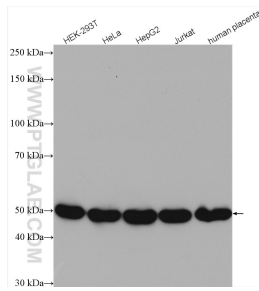
For technical support and original validation data for this product please contact:

T: 1 (888) 4PTGLAB (1-888-478-4522) (toll free in USA), or 1(312) 455-8498 (outside USA)

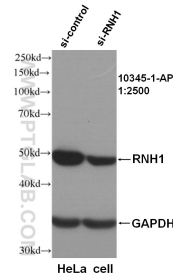
E: proteintech@ptglab.com
W: ptglab.com

This product is exclusively available under Proteintech Group brand and is not available to purchase from any other manufacturer.

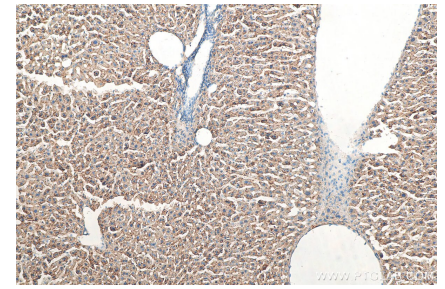
Données de validation sélectionnées



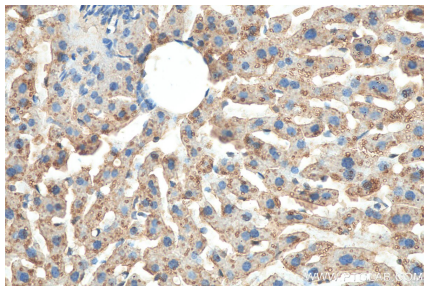
Various lysates were subjected to SDS PAGE followed by western blot with 10345-1-AP (RNH1 antibody) at dilution of 1:6000 incubated at room temperature for 1.5 hours.



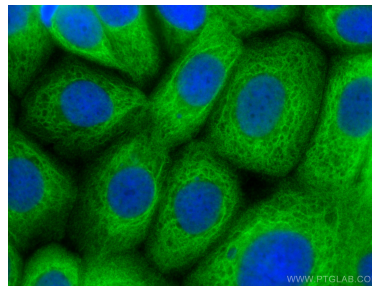
WB result of RNH1 antibody (10345-1-AP, 1:2500) with si-control and si-RNH1 transfected HeLa cells.



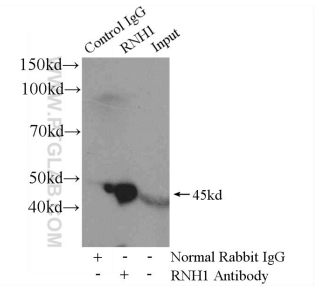
Immunohistochemical analysis of paraffin-embedded mouse liver tissue slide using 10345-1-AP (RNH1 antibody) at dilution of 1:200 (under 10x lens). Heat mediated antigen retrieval with Tris-EDTA buffer (pH 9.0).



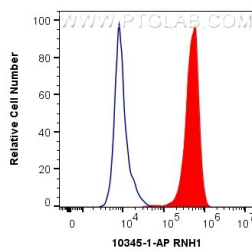
Immunohistochemical analysis of paraffin-embedded mouse liver tissue slide using 10345-1-AP (RNH1 antibody) at dilution of 1:200 (under 40x lens). Heat mediated antigen retrieval with Tris-EDTA buffer (pH 9.0).



Immunofluorescent analysis of (-20°C Methanol) fixed MCF-7 cells using RNH1 antibody (10345-1-AP) at dilution of 1:400 and CoraLite®488-Conjugated AffiniPure Goat Anti-Rabbit IgG(H+L).



IP Result of anti-RNH1 (IP:10345-1-AP, 4ug; Detection:10345-1-AP 1:500) with mouse liver tissue lysate 6400ug.



1X10⁶ MCF-7 cells were intracellularly stained with 0.4 ug Anti-Human RNH1 (10345-1-AP) and CoraLite®488-Conjugated AffiniPure Goat Anti-Rabbit IgG(H+L) at dilution 1:1000 (red), or 0.4 ug Control Antibody. Cells were fixed with 4% PFA and permeabilized with Flow Cytometry Perm Buffer (PF00011-C).