

À des fins de recherche uniquement

Anticorps Polyclonal de lapin anti-CTBP2



Numéro de catalogue: 10346-1-AP

4 Publications

Informations de base

Numéro de catalogue:
10346-1-AP

Taille:
150ul, Concentration: 333 µg/ml by
Nanodrop;

Hôte:
Lapin

Isotype:
IgG

Immunogen Catalog Number:
AG0352

Numéro d'acquisition GenBank:
BC002486

Identification du gène (NCBI):
1488

Nom complet:
C-terminal binding protein 2

MW calculé
49 kDa

MW observés:
49 kDa

Méthode de purification:
Purification par affinité contre
l'antigène

Dilutions recommandées:
WB 1:1000-1:4000
IP 0.5-4.0 µg for IP and 1:500-1:1000
for WB
IF 1:1000-1:4000

Applications

Applications testées:
FC, IF, IP, WB, ELISA

Demandes citées:
IF

Spécificité de l'espèce:
Humain, rat, souris

Espèces citées:
poisson-zèbre, souris, Gerbille

Contrôles positifs:

WB : tissu cérébral de souris, tissu cardiaque de souris,
tissu cérébral de rat

IP : tissu cardiaque de souris,

IF : cellules HeLa,

Informations générales

C-Terminal binding protein 2 (CTBP2) is a transcriptional repressor. It contains a NAD⁺ binding domain similar to NAD⁺-dependent 2-hydroxyacid dehydrogenases. This protein is thought to bind to the C-terminus of the adenovirus E1A proteins. Studies in mice suggested that this protein is involved in transcriptional repression. CTBP2 is expressed in all tissues tested, with a higher level of expression in the heart, skeletal muscle, and pancreas. The gene of CTBP2 is mapped to human chromosome 21q21.3.

Publications notables

Autrice	Pubmed ID	Journal	Application
Marta Lozano-Ortega	30024872	PLoS Biol	IF
Aoshuang Chang	29849558	Neural Plast	IF
Johnson Stuart L SL	18650343	J Neurosci	IF

Stockage

Stockage:

Stocker à -20°C. Stable pendant un an après l'expédition.

Tampon de stockage:

PBS avec azoture de sodium à 0,02 % et glycérol à 50 % pH 7,3

L'aliquotage n'est pas nécessaire pour le stockage à -20C

*** Les 20ul contiennent 0,1% de BSA.

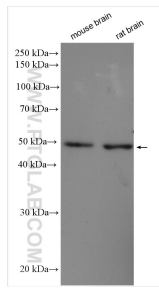
For technical support and original validation data for this product please contact:

T: 1 (888) 4PTGLAB (1-888-478-4522) (toll free
in USA), or 1(312) 455-8498 (outside USA)

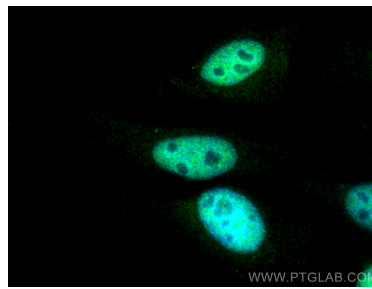
E: proteintech@ptglab.com
W: ptglab.com

This product is exclusively available under Proteintech Group brand and is not available to purchase from any other manufacturer.

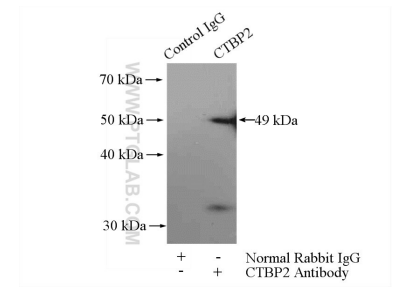
Données de validation sélectionnées



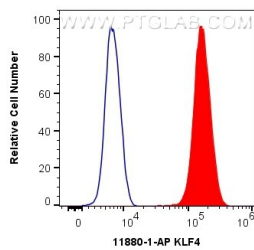
Various lysates were subjected to SDS PAGE followed by western blot with 10346-1-AP (CTBP2 antibody) at dilution of 1:2000 incubated at room temperature for 1.5 hours.



Immunofluorescent analysis of (4% PFA) fixed HeLa cells using CTBP2 antibody (10346-1-AP) at dilution of 1:2000 and CoraLite@488-Conjugated AffiniPure Goat Anti-Rabbit IgG(H+L).



IP Result of anti-CTBP2 (IP:10346-1-AP, 4ug; Detection:10346-1-AP 1:500) with mouse heart tissue lysate 3200ug.



1X10⁶ HeLa cells were intracellularly stained with 0.4 ug Anti-Human CTBP2 (10346-1-AP) and CoraLite@488-Conjugated AffiniPure Goat Anti-Rabbit IgG(H+L) at dilution 1:1000 (red), or 0.4 ug Isotype Control. Cells were fixed and permeabilized with Transcription Factor Staining Buffer Kit (PF00011).