

À des fins de recherche uniquement

# Anticorps Polyclonal de lapin anti-STOML2



Numéro de catalogue: 10348-1-AP

Phare

47 Publications

## Informations de base

Numéro de catalogue:  
10348-1-AP

Taille:  
150ul, Concentration: 400 µg/ml by Nanodrop and 213 µg/ml by Bradford method using BSA as the standard;

Hôte:  
Lapin

Isotype:  
IgG

Immunogen Catalog Number:  
AG0363

Numéro d'acquisition GenBank:  
BC002442

Identification du gène (NCBI):  
30968

Nom complet:  
stomatin (EPB72)-like 2

MW calculé:  
356 aa, 39 kDa

MW observés:  
39 kDa

Méthode de purification:  
Purification par affinité contre l'antigène

Dilutions recommandées:  
WB 1:1000-1:6000  
IP 0.5-4.0 ug for IP and 1:500-1:2000 for WB  
IHC 1:20-1:200  
IF 1:20-1:200

## Applications

Applications testées:  
IF, IHC, IP, WB, ELISA

Demandes citées:  
IF, IHC, IP, WB

Spécificité de l'espèce:  
Humain, rat, souris

Espèces citées:  
Humain, souris

**Remarque-IHC: il est suggéré de démasquer l'antigène avec un tampon de TE buffer pH 9,0; (\*) A défaut, le démasquage de l'antigène peut être effectué avec un tampon citrate pH 6,0.**

Contrôles positifs:

WB : cellules C6, cellules HEK-293, tissu cérébral de rat, tissu cérébral de souris

IP : tissu cérébral de souris,

IHC : tissu de cancer du poumon humain, tissu de cancer de l'endomètre humain, tissu de cancer du sein humain

IF : cellules MCF-7,

## Informations générales

STOML2 (Stomatin-like protein 2; also known as SLP-2) is a widely expressed mitochondrial member of the highly conserved family of stomatin proteins. STOML2 is localized mostly in mitochondrial inner membrane, minor in plasma membrane. Human STOML2 interacts with prohibitins and regulates mitochondrial biogenesis and function (21746876). In addition, plenty of studies revealed that STOML2 was overexpressed in many human cancer tissues, and its expression may be a new valuable prognostic biomarker (19839737, 21960069). Recently STOML2 has been identified as a serological biomarker for early colorectal cancer (CRC) diagnosis (21209152). Two isoforms of STOML2 exist due to the alternative splicing, with MW of 39 kDa and 33 kDa, respectively.

## Publications notables

Autrice	Pubmed ID	Journal	Application
Huan Deng	29181097	Oncol Lett	IHC
Yijie Huang	29033585	Onco Targets Ther	IHC
Yueqi Wang	19597348	Cancer Biol Ther	WB,IHC,IF

## Stockage

Stockage:

Stocker à -20°C. Stable pendant un an après l'expédition.

Tampon de stockage:

PBS avec azoture de sodium à 0,02 % et glycérol à 50 % pH 7,3

L'aliquotage n'est pas nécessaire pour le stockage à -20C

\*\*\* Les 20ul contiennent 0,1% de BSA.

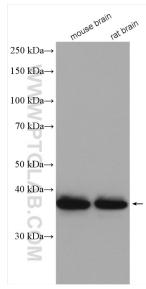
For technical support and original validation data for this product please contact:

T: 1 (888) 4PTGLAB (1-888-478-4522) (toll free in USA), or 1(312) 455-8498 (outside USA)

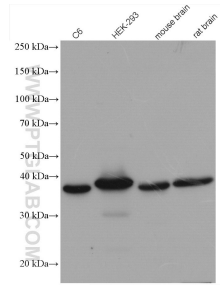
E: proteintech@ptglab.com  
W: ptglab.com

This product is exclusively available under Proteintech Group brand and is not available to purchase from any other manufacturer.

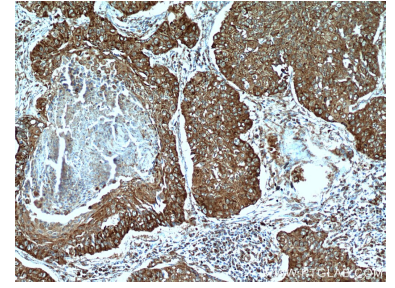
## Données de validation sélectionnées



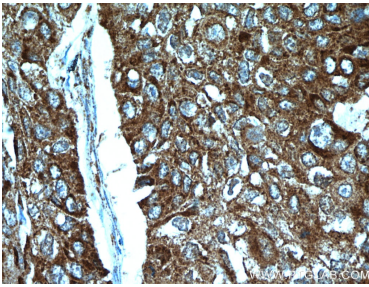
Various lysates were subjected to SDS PAGE followed by western blot with 10348-1-AP (STOML2 antibody) at dilution of 1:5000 incubated at room temperature for 1.5 hours.



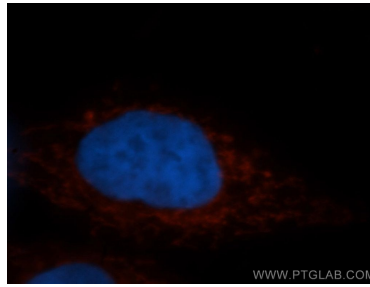
Various lysates were subjected to SDS PAGE followed by western blot with 10348-1-AP (STOML2 antibody) at dilution of 1:3000 incubated at room temperature for 1.5 hours.



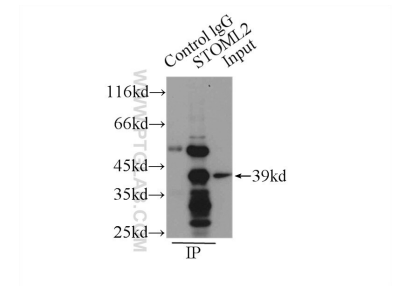
Immunohistochemical analysis of paraffin-embedded human lung cancer using 10348-1-AP (STOML2 antibody) at dilution of 1:100 (under 10x lens).



Immunohistochemical analysis of paraffin-embedded human lung cancer using 10348-1-AP (STOML2 antibody) at dilution of 1:100 (under 40x lens).



Immunofluorescent analysis of MCF-7 cells, using STOML2 antibody 10348-1-AP at 1:50 dilution and Rhodamine-labeled goat anti-rabbit IgG (red). Blue pseudocolor = DAPI (fluorescent DNA dye).



IP Result of anti-STOML2 (IP:10348-1-AP, 3ug; Detection:10348-1-AP 1:1000) with mouse brain tissue lysate 1000ug.