

À des fins de recherche uniquement

Anticorps Polyclonal de lapin anti-Emerin



Numéro de catalogue: 10351-1-AP

23 Publications

Informations de base

Numéro de catalogue:
10351-1-AP

Taille:
150ul, Concentration: 700 µg/ml by Nanodrop and 500 µg/ml by Bradford method using BSA as the standard;

Hôte:
Lapin

Isotype:
IgG

Immunogen Catalog Number:
AG0236

Numéro d'acquisition GenBank:
BC000738

Identification du gène (NCBI):
2010

Nom complet:
emerin

MW calculé
34 kDa

MW observés:
35 kDa

Méthode de purification:
Purification par affinité contre l'antigène

Dilutions recommandées:
WB 1:2000-1:10000
IP 0.5-4.0 ug for IP and 1:500-1:2000 for WB
IHC 1:500-1:2000
IF 1:50-1:500

Applications

Applications testées:
FC, IF, IHC, IP, WB, ELISA

Demandes citées:
CoIP, IF, IHC, IP, WB

Spécificité de l'espèce:
Humain, souris

Espèces citées:
Humain, souris

Remarque-IHC: il est suggéré de démasquer l'antigène avec un tampon de TE buffer pH 9,0; (*) A défaut, le démasquage de l'antigène peut être effectué avec un tampon citrate pH 6,0.

Contrôles positifs:

WB : cellules HEK-293, cellules A431, cellules COLO 320, cellules HeLa, cellules HepG2, cellules Jurkat, cellules MCF-7

IP : tissu de muscle squelettique de souris,

IHC : tissu de cancer de la thyroïde humaine,

IF : cellules HeLa,

Informations générales

Emerin (Emery-Dreifuss muscular dystrophy) (EMD or EDMD), a serine-rich nuclear membrane protein, is a member of the nuclear lamina-associated protein family. EMD may mediate membrane anchorage to the cytoskeleton by stabilizing and promoting the formation of a nuclear actin cortical network. Defects in EMD gene are the cause of Emery-Dreifuss muscular dystrophy type 1 (EDMD1), a degenerative myopathy characterized by weakness and atrophy of muscle without involvement of the nervous system, early contractures of the elbows Achilles tendons and spine, and cardiomyopathy associated with cardiac conduction defects. EMD inhibits beta-catenin activity by preventing its accumulation in the nucleus and is involved in HIV-1 infection.

Publications notables

Autrice	Pubmed ID	Journal	Application
Shiwei Liu	30232450	Nature	IF
Dean J Procter	32908309	Nature	WB,IF
Christelle Lenain	26354777	Carcinogenesis	WB, IF

Stockage

Stockage:

Stocker à -20°C. Stable pendant un an après l'expédition.

Tampon de stockage:

PBS avec azoture de sodium à 0,02 % et glycérol à 50 % pH 7,3

L'aliquotage n'est pas nécessaire pour le stockage à -20C

*** Les 20ul contiennent 0,1% de BSA.

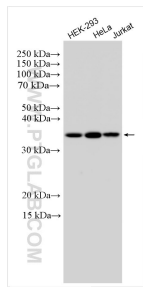
For technical support and original validation data for this product please contact:

T: 1 (888) 4PTGLAB (1-888-478-4522) (toll free in USA), or 1(312) 455-8498 (outside USA)

E: proteintech@ptglab.com
W: ptglab.com

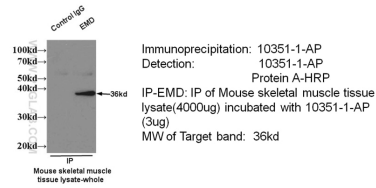
This product is exclusively available under Proteintech Group brand and is not available to purchase from any other manufacturer.

Données de validation sélectionnées

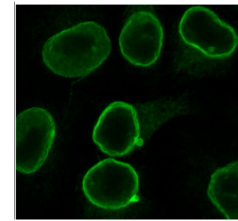


Various lysates were subjected to SDS PAGE followed by western blot with 10351-1-AP (Emerin antibody) at dilution of 1:5000 incubated at room temperature for 1.5 hours.

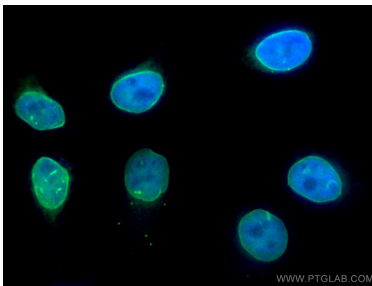
IP & WB of 10351-1-AP with Mouse skeletal muscle tissue



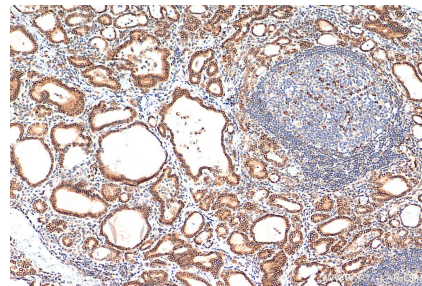
IP result of EMD antibody (10351-1-AP for IP and Detection) with mouse skeletal muscle tissue lysate.



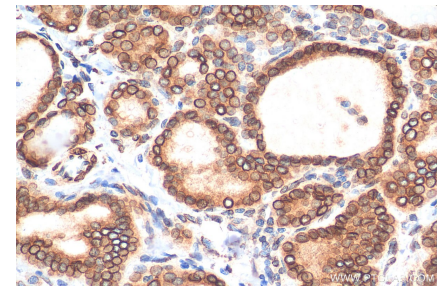
IF result of anti-EMD (10351-1-AP) in HeLa cell by Dr. Ralph Kehlenbach.



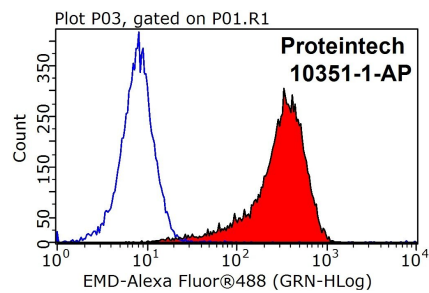
Immunofluorescent analysis of (4% PFA) fixed HeLa cells using Emerin antibody (10351-1-AP) at dilution of 1:200 and CoralLite@488-Conjugated AffiniPure Goat Anti-Rabbit IgG(H+L).



Immunohistochemical analysis of paraffin-embedded human thyroid cancer tissue slide using 10351-1-AP (Emerin antibody) at dilution of 1:1000 (under 10x lens). Heat mediated antigen retrieval with Tris-EDTA buffer (pH 9.0).



Immunohistochemical analysis of paraffin-embedded human thyroid cancer tissue slide using 10351-1-AP (Emerin antibody) at dilution of 1:1000 (under 40x lens). Heat mediated antigen retrieval with Tris-EDTA buffer (pH 9.0).



1X10⁶ HEK-293T cells were stained with 0.2ug Emerin antibody (10351-1-AP, red) and control antibody (blue). Fixed with 90% MeOH blocked with 3% BSA (30 min). Alexa Fluor 488-conjugated AffiniPure Goat Anti-Rabbit IgG(H+L) with dilution 1:1000.