

À des fins de recherche uniquement

# Anticorps Polyclonal de lapin anti-SNRPD1



Numéro de catalogue: 10352-1-AP

3 Publications

## Informations de base

<b>Numéro de catalogue:</b> 10352-1-AP	<b>Numéro d'acquisition GenBank:</b> BC001721	<b>Méthode de purification:</b> Purification par affinité contre l'antigène
<b>Taille:</b> 150ul , Concentration: 700 µg/ml by Nanodrop and 200 µg/ml by Bradford method using BSA as the standard;	<b>Identification du gène (NCBI):</b> 6632	<b>Dilutions recommandées:</b> WB 1:500-1:1000
<b>Hôte:</b> Lapin	<b>Nom complet:</b> small nuclear ribonucleoprotein D1 polypeptide 16kDa	
<b>Isotype:</b> IgG	<b>MW calculé:</b> 16 kDa	
<b>Immunogen Catalog Number:</b> AG0364	<b>MW observés:</b> 13 kDa	

## Applications

<b>Applications testées:</b> WB, ELISA	<b>Contrôles positifs:</b> WB : cellules HEK-293, cellules HL-60
<b>Demandes citées:</b> IHC, WB	
<b>Spécificité de l'espèce:</b> Humain, rat, souris	
<b>Espèces citées:</b> Humain, souris	

## Informations générales

Systemic lupus erythematosus is characterized by antibodies to a variety of intracellular self-antigens, such as dsDNA and Sm, and these serve as hallmarks in the diagnosis of systemic autoimmune diseases. SNRPD1 is one Sm components of the small nuclear ribonucleoprotein complexes (snRNPs). It's a charged protein scaffold to promote snRNP assembly or strengthen snRNP-snRNP interactions through nonspecific electrostatic contacts with RNA. This antibody detects 13-16 kDa (SMD1) and 30 kDa (SMD1/SMD2 dimer form; PMID:15525645).

## Publications notables

Autrice	Pubmed ID	Journal	Application
Jing Wang	34098070	Pharmacol Res	IHC, WB
Li Wang	29503206	Cell Chem Biol	WB
Chowdhury Azazul Islam Al	24006944	J Proteome Res	WB

## Stockage

**Stockage:**  
Stocker à -20°C. Stable pendant un an après l'expédition.  
**Tampon de stockage:**  
PBS avec azoture de sodium à 0,02 % et glycérol à 50 % pH 7,3  
L'aliquotage n'est pas nécessaire pour le stockage à -20C

\*\*\* Les 20ul contiennent 0,1% de BSA.

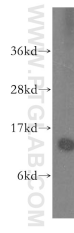
For technical support and original validation data for this product please contact:

T: 1 (888) 4PTGLAB (1-888-478-4522) (toll free in USA), or 1(312) 455-8498 (outside USA)

E: [proteintech@ptglab.com](mailto:proteintech@ptglab.com)  
W: [ptglab.com](http://ptglab.com)

This product is exclusively available under Proteintech Group brand and is not available to purchase from any other manufacturer.

## Données de validation sélectionnées



HEK-293 cells were subjected to SDS PAGE followed by western blot with 10352-1-AP (SNRPD1 antibody) at dilution of 1:500 incubated at room temperature for 1.5 hours.