

À des fins de recherche uniquement

Anticorps Polyclonal de lapin anti-P21



Numéro de catalogue: 10355-1-AP

Phare

616 Publications

Informations de base

Numéro de catalogue:

10355-1-AP

Taille:

150ul, Concentration: 900 µg/ml by Nanodrop;

Hôte:

Lapin

Isotype:

IgG

Immunogen Catalog Number:

AG0368

Numéro d'acquisition GenBank:

BC000275

Identification du gène (NCBI):

1026

Nom complet:

cyclin-dependent kinase inhibitor 1A (p21, Cip1)

MW calculé

21 kDa

MW observés:

21 kDa

Méthode de purification:

Purification par affinité contre l'antigène

Dilutions recommandées:

WB 1:1000-1:4000

IP 0.5-4.0 µg for IP and 1:1000-1:4000 for WB

IHC 1:200-1:600

IF 1:50-1:500

Applications

Applications testées:

FC, IF, IHC, IP, WB, ELISA

Demandes citées:

CoIP, FC, IF, IHC, IP, WB

Spécificité de l'espèce:

Humain

Espèces citées:

canin, Humain, porc

Remarque-IHC: il est suggéré de démasquer l'antigène avec un tampon de TE buffer pH 9,0; (*) À défaut, le démasquage de l'antigène peut être effectué avec un tampon citrate pH 6,0.

Contrôles positifs:

WB : cellules HUVEC, cellules HEK-293, cellules HeLa, cellules HepG2, cellules LNCaP, cellules MCF-7, cellules NCCIT, cellules THP-1, cellules U2OS

IP : cellules MCF-7,

IHC : tissu de cancer du col de l'utérus humain, tissu de cancer de la thyroïde humaine, tissu de cancer de l'estomac humain, tissu de cancer du côlon humain, tissu de cancer du sein humain, tissu rénal humain

IF : cellules MCF-7, tissu de myotome d'un somite à E11.5

Informations générales

CDKN1A (p21, CIP1, WAF1) is a cyclin-dependent kinase inhibitor. CDKN1A binds to and inhibits the activity of cyclin-CDK2 or -CDK4 complexes, and thus functions as a regulator of cell cycle progression at the G1 phase. The expression of CDKN1A is induced by wild-type but not mutant p53 protein, through which CDKN1A mediates the p53-dependent cell cycle G1 phase arrest in response to a variety of stress stimuli. CDKN1A can interact with proliferating cell nuclear antigen (PCNA), and plays a regulatory role in S phase DNA replication and DNA damage repair. CDKN1A was reported to be specifically cleaved by CASP3-like caspases, which thus leads to a dramatic activation of CDK2, and may be instrumental in the execution of apoptosis following caspase activation. Two alternatively spliced variants, which encode an identical protein, have been reported.

Publications notables

Autrice	Pubmed ID	Journal	Application
Jing Zhao	32986180	Biotechnol Lett	WB
Shengya Tian	31562192	Life Sci Alliance	WB
Wei Zhao	29212181	Oncotarget	WB

Stockage

Stockage:

Stocker à -20°C. Stable pendant un an après l'expédition.

Tampon de stockage:

PBS avec azoture de sodium à 0,02 % et glycérol à 50 % pH 7,3

L'aliquoteur n'est pas nécessaire pour le stockage à -20C

*** Les 20ul contiennent 0,1% de BSA.

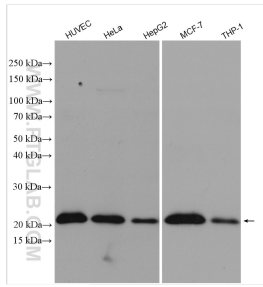
For technical support and original validation data for this product please contact:

T: 1 (888) 4PTGLAB (1-888-478-4522) (toll free in USA), or 1(312) 455-8498 (outside USA)

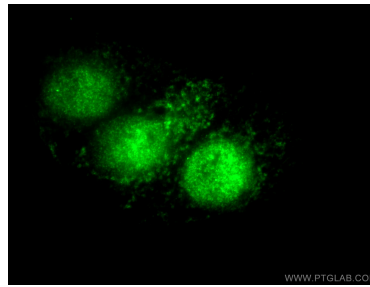
E: proteintech@ptglab.com
W: ptglab.com

This product is exclusively available under Proteintech Group brand and is not available to purchase from any other manufacturer.

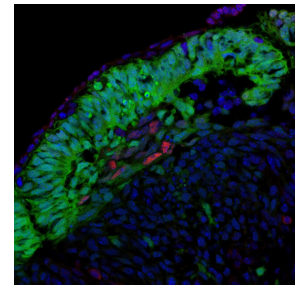
Données de validation sélectionnées



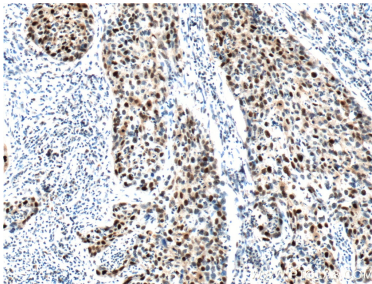
Various lysates were subjected to SDS PAGE followed by western blot with 10355-1-AP (P21 antibody) at dilution of 1:2000 incubated at room temperature for 1.5 hours.



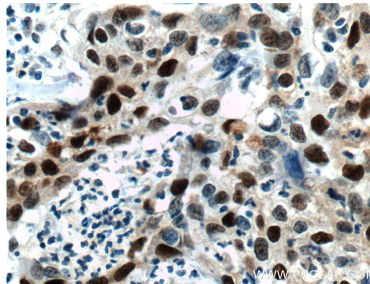
Immunofluorescent analysis of (4% PFA) fixed MCF-7 cells using 10355-1-AP (P21;CDKN1A antibody) at dilution of 1:50 and Alexa Fluor 488-conjugated AffiniPure Goat Anti-Rabbit IgG(H+L).



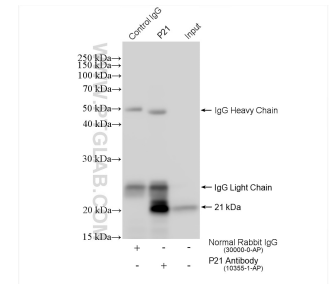
IF result of anti-p21 (CDKN1A, 10355-1-AP) in the myotome of a somite at E11.5 by Dr. Zalc A. and Dr. Relaix F. (Red = p21; Green=Pax3 from a GFP reporter; Blue=DAPI).



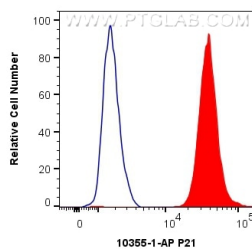
Immunohistochemical analysis of paraffin-embedded human cervical cancer tissue slide using 10355-1-AP (P21;CDKN1A Antibody) at dilution of 1:400 (under 10x lens). Heat mediated antigen retrieval with Tris-EDTA buffer (pH 9.0).



Immunohistochemical analysis of paraffin-embedded human cervical cancer tissue slide using 10355-1-AP (P21;CDKN1A Antibody) at dilution of 1:400 (under 40x lens). Heat mediated antigen retrieval with Tris-EDTA buffer (pH 9.0).



IP result of anti-P21(IP:10355-1-AP, 4ug; Detection:10355-1-AP 1:2000) with MCF-7 cells lysate 1880 ug.



1×10^6 MCF-7 cells were intracellularly stained with 0.4 ug Anti-Human P21 (10355-1-AP) and CoraLite®488-Conjugated AffiniPure Goat Anti-Rabbit IgG(H+L) at dilution 1:1000 (red), or 0.4 ug Isotype Control. Cells were fixed and permeabilized with Transcription Factor Staining Buffer Kit (PF00011).