

À des fins de recherche uniquement

Anticorps Polyclonal de lapin anti-GGA2



Numéro de catalogue: 10356-1-AP

Phare

2 Publications

Informations de base

Numéro de catalogue:

10356-1-AP

Taille:

150ul, Concentration: 500 µg/ml by Nanodrop and 133 µg/ml by Bradford method using BSA as the standard;

Hôte:

Lapin

Isotype:

IgG

Immunogen Catalog Number:

AG0370

Numéro d'acquisition GenBank:

BC000284

Identification du gène (NCBI):

23062

Nom complet:

golgi associated, gamma adaptin ear containing, ARF binding protein 2

MW calculé

67 kDa

MW observés:

67 kDa

Méthode de purification:

Purification par affinité contre l'antigène

Dilutions recommandées:

WB 1:500-1:2000

IHC 1:200-1:800

IF 1:50-1:500

Applications

Applications testées:

IF, IHC, WB, ELISA

Demandes citées:

WB

Spécificité de l'espèce:

Humain, rat, souris

Espèces citées:

Humain, rat

Remarque-IHC: il est suggéré de démasquer l'antigène avec un tampon de TE buffer pH 9,0; (*) A défaut, 'le démasquage de l'antigène peut être 'effectué avec un tampon citrate pH 6,0.

Contrôles positifs:

WB : tissu cérébral de souris, cellules HeLa, tissu adipeux de souris, tissu rénal humain

IHC : tissu de cancer du côlon humain, tissu de cancer de l'estomac humain

IF : cellules HeLa,

Informations générales

GGA2, also known as VEAR, belongs to the GGA protein family and regulates the trafficking of proteins between the trans-Golgi network and the lysosome. GGA2 has an amino-terminal VHS domain in its N terminus which mediates sorting of the mannose 6-phosphate receptors at the trans-Golgi network. They also contain a carboxy-terminal region with homology to the ear domain of gamma-adaptins.

Publications notables

Autrice	Pubmed ID	Journal	Application
Arunas Kvainickas	28935632	J Cell Biol	WB
Bing Li	35265682	Front Cardiovasc Med	WB

Stockage

Stockage:

Stocker à -20°C. Stable pendant un an après l'expédition.

Tampon de stockage:

PBS avec azoture de sodium à 0,02 % et glycérol à 50 % pH 7,3

L'aliquotage n'est pas nécessaire pour le stockage à -20C

*** Les 20ul contiennent 0,1% de BSA.

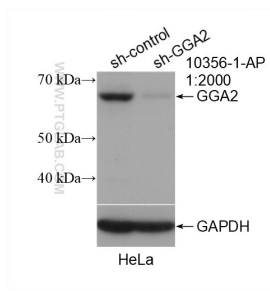
For technical support and original validation data for this product please contact:

T: 1 (888) 4PTGLAB (1-888-478-4522) (toll free in USA), or 1(312) 455-8498 (outside USA)

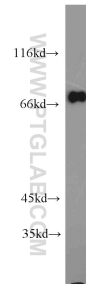
E: proteintech@ptglab.com
W: ptglab.com

This product is exclusively available under Proteintech Group brand and is not available to purchase from any other manufacturer.

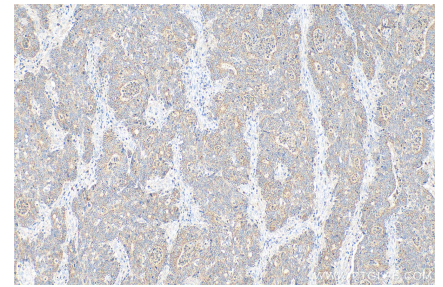
Données de validation sélectionnées



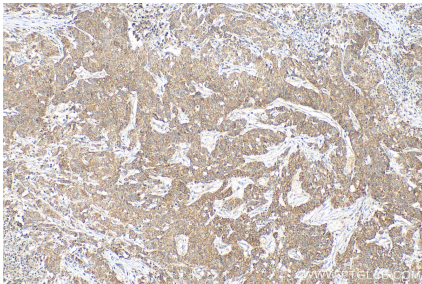
WB result of GGA2 antibody (10356-1-AP; 1:2000; incubated at room temperature for 1.5 hours) with sh-Control and sh-GGA2 transfected HeLa cells.



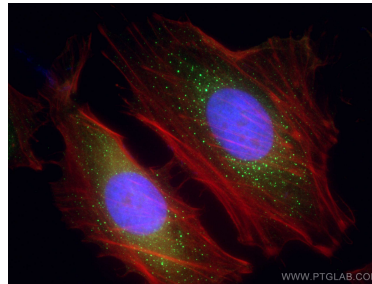
mouse brain tissue were subjected to SDS PAGE followed by western blot with 10356-1-AP (GGA2 antibody) at dilution of 1:1000 incubated at room temperature for 1.5 hours.



Immunohistochemical analysis of paraffin-embedded human colon cancer tissue slide using 10356-1-AP (GGA2 antibody) at dilution of 1:400 (under 10x lens). Heat mediated antigen retrieval with Tris-EDTA buffer (pH 9.0).



Immunohistochemical analysis of paraffin-embedded human stomach cancer tissue slide using 10356-1-AP (GGA2 antibody) at dilution of 1:400 (under 10x lens). Heat mediated antigen retrieval with Tris-EDTA buffer (pH 9.0).



Immunofluorescent analysis of (4% PFA) fixed HeLa cells using GGA2 antibody (10356-1-AP) at dilution of 1:200 and CoraLite@488-Conjugated AffiniPure Goat Anti-Rabbit IgG(H+L), CL594-Phalloidin (red).