

À des fins de recherche uniquement

Anticorps Polyclonal de lapin anti-MAPRE2



Numéro de catalogue: 10364-1-AP

Phare

2 Publications

Informations de base

Numéro de catalogue:
10364-1-AP

Taille:
150ul, Concentration: 300 µg/ml by
Nanodrop and 250 µg/ml by Bradford
method using BSA as the standard;

Hôte:
Lapin

Isotype:
IgG

Immunogen Catalog Number:
AG0416

Numéro d'acquisition GenBank:
BC007318

Identification du gène (NCBI):
10982

Nom complet:
microtubule-associated protein,
RP/EB family, member 2

MW calculé

37 kDa

MW observés:

39-42 kDa

Méthode de purification:
Purification par affinité contre
l'antigène

Dilutions recommandées:
WB 1:500-1:2000
IF 1:50-1:500

Applications

Applications testées:
IF, WB, ELISA

Demandes citées:
WB

Spécificité de l'espèce:
Humain, rat, souris

Espèces citées:
souris

Contrôles positifs:

WB : cellules K-562, cellules Jurkat

IF : cellules de souris,

Informations générales

RP1 protein shares significant homology to the adenomatous polyposis coli (APC) protein-binding EB1 gene family and binds specifically to the C-terminal region of the APC protein. RP1 also binds directly to tubulin, both in vitro and in vivo. The function of RP1 is currently unknown; however, its homology suggests involvement in tumorigenesis of colorectal cancers and proliferative control of normal cells. It may belong to the intermediate/early gene family, involved in the signal transduction cascade downstream of the TCR.

Publications notables

Autrice	Pubmed ID	Journal	Application
Odetta Antico	34767452	Sci Adv	WB
Yuan-Yuan Li	35398309	Exp Cell Res	WB

Stockage

Stockage:

Stocker à -20°C. Stable pendant un an après l'expédition.

Tampon de stockage:

PBS avec azoture de sodium à 0,02 % et glycérol à 50 % pH 7,3

L'aliquotage n'est pas nécessaire pour le stockage à -20C

*** Les 20ul contiennent 0,1% de BSA.

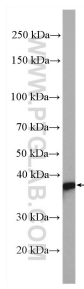
For technical support and original validation data for this product please contact:

T: 1 (888) 4PTGLAB (1-888-478-4522) (toll free
in USA), or 1(312) 455-8498 (outside USA)

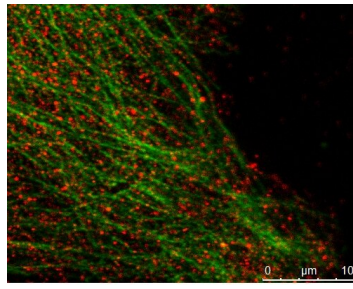
E: proteintech@ptglab.com
W: ptglab.com

This product is exclusively available under Proteintech Group brand and is not available to purchase from any other manufacturer.

Données de validation sélectionnées



K-562 cells were subjected to SDS PAGE followed by western blot with 10364-1-AP (MAPRE2 antibody) at dilution of 1:1000 incubated at room temperature for 1.5 hours.



Mouse keratinocyte showing MAPRE2 (#10364-1-AP, 1:100 dilution, with Alexa 594 labelled 2nd Ab) in red and alpha-tubulin (#66031-1-Ig, 1:100 dilution, with Alexa 488 labelled 2nd Ab) in green.