

À des fins de recherche uniquement

Anticorps Polyclonal de lapin anti-Vimentin



Numéro de catalogue: 10366-1-AP

Phare

1286 Publications

Informations de base

Numéro de catalogue:	10366-1-AP	Numéro d'acquisition GenBank:	BC000163	Méthode de purification:	Purification par affinité contre l'antigène
Taille:	150ul, Concentration: 400 µg/ml by Nanodrop;	Identification du gène (NCBI):	7431	Dilutions recommandées:	WB 1:2000-1:10000 IHC 1:2500-1:10000 IF 1:50-1:500
Hôte:	Lapin	Nom complet:	vimentin		
Isotype:	IgG	MW calculé:	466 aa, 54 kDa		
Immunogen Catalog Number:	AG0489	MW observés:	54 kDa		

Applications

Applications testées:

FC, IF, IHC, WB, ELISA

Demandes citées:

CoIP, ELISA, FC, IF, IHC, IP, WB

Spécificité de l'espèce:

Humain, rat, souris

Espèces citées:

bovin, Humain, porc, rat, souris, Hamster

Remarque-IHC: il est suggéré de démasquer l'antigène avec un tampon de TE buffer pH 9.0; (*) A défaut, le démasquage de l'antigène peut être effectué avec un tampon citrate pH 6,0.

Contrôles positifs:

WB : cellules HeLa, cellules Jurkat, cellules NIH/3T3, tissu cardiaque de souris

IHC : tissu de cancer du foie humain, tissu d'amygdalite humain, tissu de cancer du sein humain, tissu de cirrhose hépatique humaine, tissu hépatique humain

IF : cellules HepG2, tissu de cancer du sein humain, tissu rénal humain

Informations générales

Vimentin, also named as VIM, belongs to the intermediate filament family. Vimentin is class-III intermediate filaments found in various non-epithelial cells, especially mesenchymal cells. Vimentin is important for stabilizing the architecture of the cytoplasm. Monocyte-derived macrophages secrete vimentin into the extracellular space in vitro. Secretion of vimentin was enhanced by the proinflammatory cytokine tumor necrosis factor-alpha (TNFα; 191160) and inhibited by the anti-inflammatory cytokine IL10 (124092), suggesting that vimentin is involved in the immune response. Vimentin has specialized functions that contribute to specific dynamic cellular processes. As a phosphoprotein, 55-60 kDa of vimentin proteins can be observed due to the different phosphorylation level. Isoforms of vimentin (49 kDa and 60 kDa) had also been reported. (PMID: 8640945, 22728585).

Publications notables

Autrice	Pubmed ID	Journal	Application
Xia Peng	36247281	Am J Transl Res	WB
Ji Xing	36230734	Cancers (Basel)	IHC,IF
Mengru Xie	32999278	Int J Oral Sci	WB

Stockage

Stockage:

Stocker à -20°C. Stable pendant un an après l'expédition.

Tampon de stockage:

PBS avec azote de sodium à 0,02 % et glycérol à 50 % pH 7,3

L'aliquotage n'est pas nécessaire pour le stockage à -20C

***** Les 20ul contiennent 0,1% de BSA**

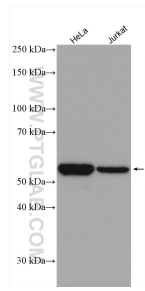
For technical support and original validation data for this product please contact:

T: 1 (888) 4PTGLAB (1-888-478-4522) (toll free in USA), or 1(312) 455-8498 (outside USA)

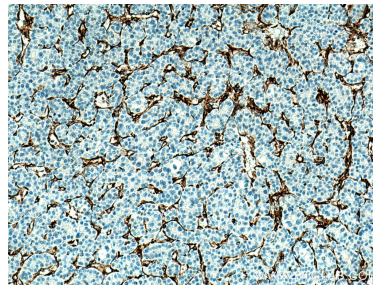
E: proteintech@ptglab.com
W: ptglab.com

This product is exclusively available under Proteintech Group brand and is not available to purchase from any other manufacturer.

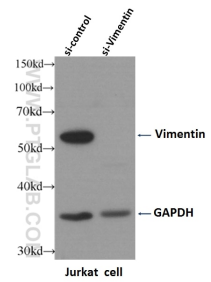
Données de validation sélectionnées



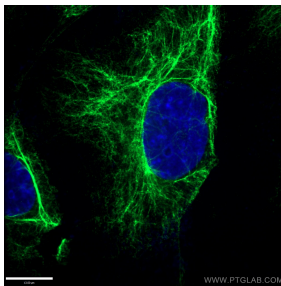
Various lysates were subjected to SDS PAGE followed by western blot with 10366-1-AP (Vimentin antibody) at dilution of 1:5000 incubated at room temperature for 1.5 hours.



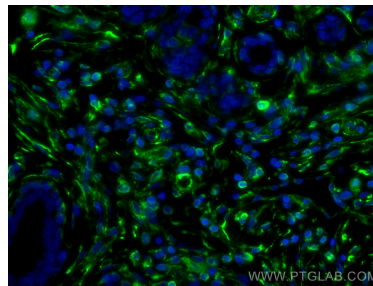
Immunohistochemical analysis of paraffin-embedded human liver cancer tissue slide using 10366-1-AP (Vimentin antibody) at dilution of 1:5000 (under 10x lens). Heat mediated antigen retrieval with Tris-EDTA buffer (pH 9.0).



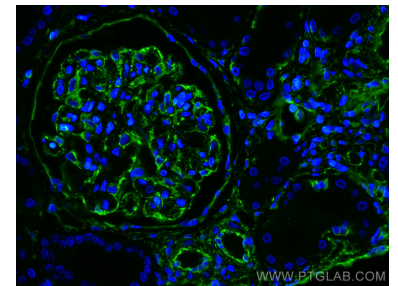
WB result of Vimentin antibody (10366-1-AP, 1:4000) with si-Control and si-Vimentin transfected Jurkat cells.



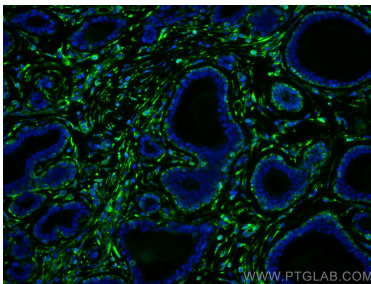
Immunofluorescent analysis of (-20°C Ethanol) fixed HepG2 cells using 10366-1-AP (Vimentin antibody) at dilution of 1:50 and Alexa Fluor 488-conjugated AffiniPure Goat Anti-Rabbit IgG(H+L).



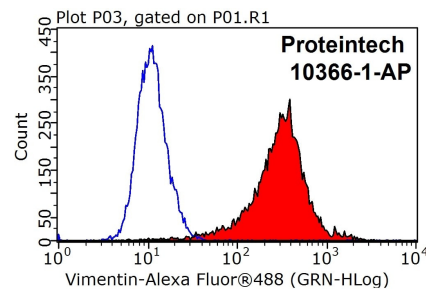
Immunofluorescent analysis of (4% PFA) fixed human breast cancer tissue using Vimentin antibody (10366-1-AP) at dilution of 1:200 and CoraLite®488-Conjugated AffiniPure Goat Anti-Rabbit IgG(H+L).



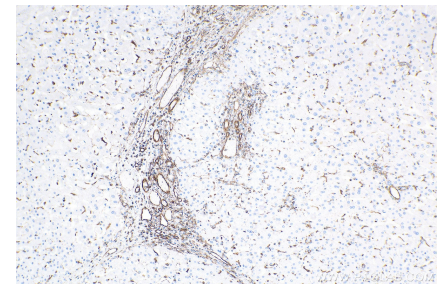
Immunofluorescent analysis of (4% PFA) fixed human kidney tissue using Vimentin antibody (10366-1-AP) at dilution of 1:200 and CoraLite®488-Conjugated AffiniPure Goat Anti-Rabbit IgG(H+L).



Immunofluorescent analysis of (4% PFA) fixed human breast cancer tissue using Vimentin antibody (10366-1-AP) at dilution of 1:200 and CoraLite®488-Conjugated AffiniPure Goat Anti-Rabbit IgG(H+L).



1X10⁶ HeLa cells were stained with 0.2ug Vimentin antibody (10366-1-AP, red) and control antibody (blue). Cells were fixed with 4% PFA and permeabilized with 0.1% Triton X-100. Alexa Fluor 488-conjugated AffiniPure Goat Anti-Rabbit IgG(H+L) with dilution 1:1000.



Immunohistochemical analysis of paraffin-embedded human hepatocirrhosis tissue slide using 10366-1-AP (Vimentin antibody) at dilution of 1:5000 (under 10x lens). Heat mediated antigen retrieval with Tris-EDTA buffer (pH 9.0).