

À des fins de recherche uniquement

Anticorps Polyclonal de lapin anti-MMP2



Numéro de catalogue: 10373-2-AP

Phare

736 Publications

Informations de base

Numéro de catalogue:
10373-2-AP

Taille:
150ul, Concentration: 650 µg/ml by
Nanodrop;

Hôte:
Lapin

Isotype:
IgG

Immunogen Catalog Number:
AG0549

Numéro d'acquisition GenBank:
BC002576

Identification du gène (NCBI):
4313

Nom complet:
matrix metalloproteinase 2
(gelatinase A, 72kDa gelatinase,
72kDa type IV collagenase)

MW calculé
72 kDa

MW observés:
62-72 kDa

Méthode de purification:
Purification par affinité contre
l'antigène

Dilutions recommandées:
WB 1:500-1:1000
IP 0.5-4.0 ug for IP and 1:200-1:1000
for WB
IHC 1:100-1:400
IF 1:50-1:500

Applications

Applications testées:
IF, IHC, IP, WB, ELISA

Demandes citées:
IF, IHC, IP, WB

Spécificité de l'espèce:
Humain, souris

Espèces citées:
bovin, Humain, Lapin, porc, rat, souris, fish

Remarque-IHC: il est suggéré de démasquer l'antigène avec un tampon de TE buffer pH 9.0; (*) A défaut, 'le démasquage de l'antigène peut être 'effectué avec un tampon citrate pH 6,0.

Contrôles positifs:

WB : cellules HT-1080, cellules HepG2, cellules MCF-7, cellules MG U-87, cellules U-251

IP : cellules MCF-7,

IHC : tissu de gliome humain, tissu cardiaque humain, tissu de cancer de la prostate humain, tissu de cancer du sein humain, tissu œsophagien humain, tissu placentaire humain

IF : cellules HepG2,

Informations générales

MMP2, also named as CLG4A, Gelatinase Am, TBE-1 and PEX, belongs to the peptidase M10A family. It is ubiquitous metalloproteinase that is involved in diverse functions such as remodeling of the vasculature, angiogenesis, tissue repair, tumor invasion, inflammation, and atherosclerotic plaque rupture. MMP2 contributes to myocardial oxidative stress by regulating the activity of GSK3beta. It cleaves GSK3beta in vitro. MMP2 can be cleaved into PEX chain (~60kd). Western blot analysis showed that the 72 kDa and 62/65 kDa proteinase activities were pro-MMP2 and the active enzyme, respectively (PMID:11112697, PMID: 30867536).

Publications notables

Autrice	Pubmed ID	Journal	Application
Yanlin Cao	34593020	Arthritis Res Ther	WB
Samana Batool	30274346	Int J Mol Sci	WB
Yangke Cai	29097832	Dis Markers	WB

Stockage

Stockage:
Stocker à -20°C. Stable pendant un an après l'expédition.

Tampon de stockage:
PBS avec azoture de sodium à 0,02 % et glycérol à 50 % pH 7,3
L'aliquotage n'est pas nécessaire pour le stockage à -20C

*** Les 20ul contiennent 0,1% de BSA.

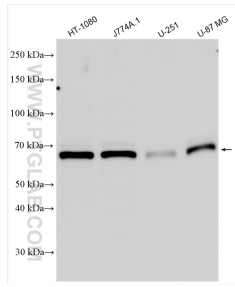
For technical support and original validation data for this product please contact:

T: 1 (888) 4PTGLAB (1-888-478-4522) (toll free in USA), or 1(312) 455-8498 (outside USA)

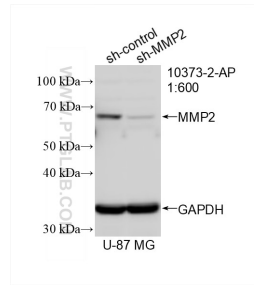
E: proteintech@ptglab.com
W: ptglab.com

This product is exclusively available under Proteintech Group brand and is not available to purchase from any other manufacturer.

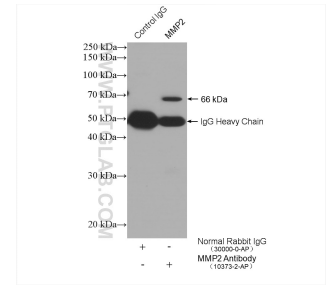
Données de validation sélectionnées



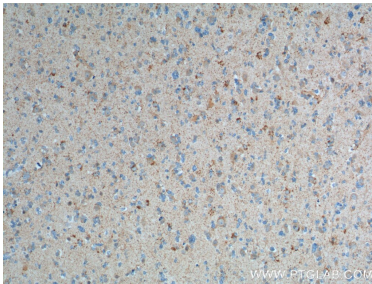
Various lysates were subjected to SDS PAGE followed by western blot with 10373-2-AP (MMP2 antibody) at dilution of 1:800 incubated at room temperature for 1.5 hours.



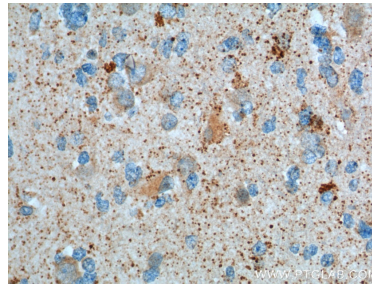
WB result of MMP2 antibody (10373-2-AP; 1:600; incubated at room temperature for 1.5 hours) with sh-Control and sh-MMP2 transfected U-87 MG cells.



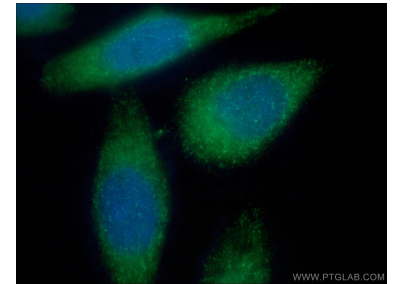
IP result of anti-MMP2 (IP:10373-2-AP, 4ug; Detection:10373-2-AP 1:300) with MCF-7 cells lysate 2400 ug.



Immunohistochemical analysis of paraffin-embedded human gliomas tissue slide using 10373-2-AP (MMP2 Antibody) at dilution of 1:200 (under 10x lens).



Immunohistochemical analysis of paraffin-embedded human gliomas tissue slide using 10373-2-AP (MMP2 Antibody) at dilution of 1:200 (under 40x lens).



Immunofluorescent analysis of (-20°C Ethanol) fixed HepG2 cells using 10373-2-AP (MMP2 antibody) at dilution of 1:50 and Alexa Fluor 488-Conjugated AffiniPure Goat Anti-Rabbit IgG(H+L).