

À des fins de recherche uniquement

Anticorps Polyclonal de lapin anti-MMP7



Numéro de catalogue: 10374-2-AP

Phare

78 Publications

Informations de base

Numéro de catalogue:
10374-2-AP

Taille:
150ul, Concentration: 800 µg/ml by
Nanodrop;

Hôte:
Lapin

Isotype:
IgG

Immunogen Catalog Number:
AG0550

Numéro d'acquisition GenBank:
BC003635

Identification du gène (NCBI):
4316

Nom complet:
matrix metalloproteinase 7
(matrilysin, uterine)

MW calculé
29 kDa

MW observés:
28-30 kDa

Méthode de purification:
Purification par affinité contre
l'antigène

Dilutions recommandées:
WB 1:1000-1:4000
IHC 1:50-1:500
IF 1:50-1:500

Applications

Applications testées:
IF, IHC, WB, ELISA

Demandes citées:
IF, IHC, WB

Spécificité de l'espèce:
Humain, souris

Espèces citées:
Humain, porc, rat, souris

Remarque-IHC: il est suggéré de démasquer l'antigène avec un tampon de TE buffer pH 9,0; (*) À défaut, le démasquage de l'antigène peut être effectué avec un tampon citrate pH 6,0.

Contrôles positifs:

WB : cellules A549, cellules COLO 320, cellules NIH/3T3, cellules PC-3, cellules SKOV-3, tissu placentaire humain

IHC : tissu de cancer du pancréas humain, tissu de cancer de la prostate humaine, tissu de cancer de l'estomac humain, tissu de cancer du côlon humain

IF : tissu de cancer du pancréas humain,

Informations générales

Matrix metalloproteinase-7 (MMP-7)/ matrilysin is a member of the MMP family, but is structurally different from the other MMPs by virtue of the absence of a conserved COOH-terminal protein domain. MMPs are involved in the breakdown of extracellular matrix in normal physiological processes, such as embryonic development reproduction, and tissue remodeling, as well as in disease processes, such as arthritis and cancer metastasis. Most MMPs are secreted as inactive proproteins which are activated when cleaved by extracellular proteinases. MMP-7 degrades proteoglycans, fibronectin, elastin and casein, and is involved in wound healing, tumor progression, pulmonary fibrosis, and development of choroidal neovascularization in age-related macular degeneration. The expression of MMP-7 is increased in most tumors. This antibody can only recognize the full-length of MMP7.

Publications notables

Autrice	Pubmed ID	Journal	Application
Rongfa Yuan	25056121	Cancer Res	WB
Xiao-Xiao He	30219235	Biochem Biophys Res Commun	WB
Xudong Peng	30205370	Cell Physiol Biochem	WB

Stockage

Stockage:

Stocker à -20°C. Stable pendant un an après l'expédition.

Tampon de stockage:

PBS avec azoture de sodium à 0,02 % et glycérol à 50 % pH 7,3

L'aliquotage n'est pas nécessaire pour le stockage à -20°C

*** Les 20ul contiennent 0,1% de BSA.

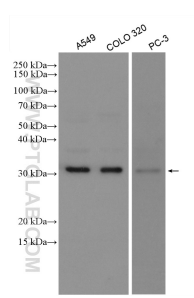
For technical support and original validation data for this product please contact:

T: 1 (888) 4PTGLAB (1-888-478-4522) (toll free in USA), or 1(312) 455-8498 (outside USA)

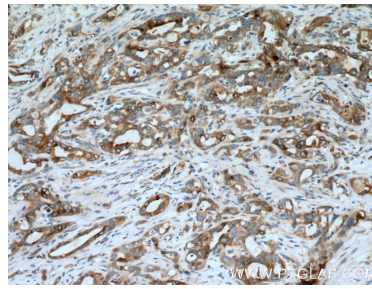
E: proteintech@ptglab.com
W: ptglab.com

This product is exclusively available under Proteintech Group brand and is not available to purchase from any other manufacturer.

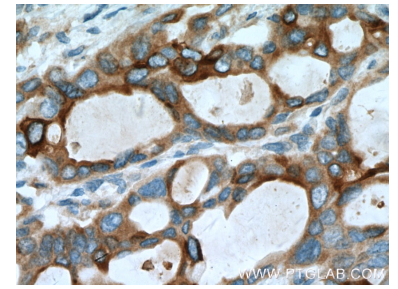
Données de validation sélectionnées



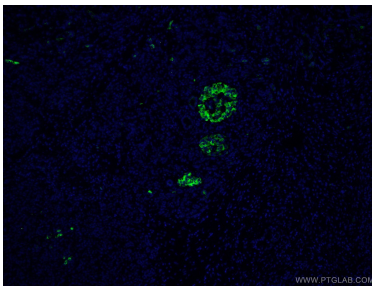
Various lysates were subjected to SDS PAGE followed by western blot with 10374-2-AP (MMP7 antibody) at dilution of 1:2000 incubated at room temperature for 1.5 hours.



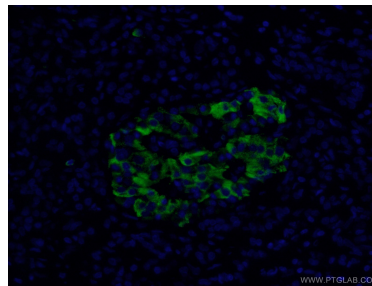
Immunohistochemical analysis of paraffin-embedded human pancreas cancer tissue slide using 10374-2-AP (MMP7 Antibody) at dilution of 1:200 (under 10x lens). Heat mediated antigen retrieval with Tris-EDTA buffer (pH 9.0).



Immunohistochemical analysis of paraffin-embedded human pancreas cancer tissue slide using 10374-2-AP (MMP7 Antibody) at dilution of 1:200 (under 40x lens). Heat mediated antigen retrieval with Tris-EDTA buffer (pH 9.0).



Immunofluorescent analysis of (4% PFA) fixed human pancreas cancer tissue using 10374-2-AP (MMP7 antibody) at dilution of 1:50 and Alexa Fluor 488-Conjugated AffiniPure Goat Anti-Rabbit IgG(H+L).



Immunofluorescent analysis of (4% PFA) fixed human pancreas cancer tissue using 10374-2-AP (MMP7 antibody) at dilution of 1:50 and Alexa Fluor 488-Conjugated AffiniPure Goat Anti-Rabbit IgG(H+L).