

À des fins de recherche uniquement

# Anticorps Polyclonal de lapin anti-MMP9 (N-terminal)



Numéro de catalogue: 10375-2-AP

Phare

958 Publications

## Informations de base

Numéro de catalogue:  
10375-2-AP

Taille:  
150ul, Concentration: 400 µg/ml by  
Nanodrop;

Hôte:  
Lapin

Isotype:  
IgG

Immunogen Catalog Number:  
AG0552

Numéro d'acquisition GenBank:  
BC006093

Identification du gène (NCBI):  
4318

Nom complet:  
matrix metalloproteinase 9  
(gelatinase B, 92kDa gelatinase,  
92kDa type IV collagenase)

MW calculé  
707 aa, 78 kDa

MW observés:  
67 kDa, 92 kDa

Méthode de purification:  
Purification par affinité contre  
l'antigène

Dilutions recommandées:  
WB 1:500-1:3000  
IHC 1:50-1:500  
IF 1:200-1:800

## Applications

Applications testées:  
FC, IF, IHC, WB, ELISA

Demandes citées:  
ColP, ELISA, IF, IHC, WB

Spécificité de l'espèce:  
Humain, rat, souris

Espèces citées:  
bovin, Humain, Lapin, porc, rat, souris, Hamster, fish

**Remarque-IHC: il est suggéré de démasquer l'antigène avec un tampon de TE buffer pH 9,0; (\*) A défaut, 'le démasquage de l'antigène peut être effectué avec un tampon citrate pH 6,0.**

Contrôles positifs:

WB : cellules Jurkat, cellules HEK-293, cellules HepG2, cellules LNCaP, cellules MDA-MB-231, cellules Raji

IHC : tissu de cancer du sein humain, tissu de cancer du col de l'utérus humain

IF : cellules HepG2,

## Informations générales

Proteins of the matrix metalloproteinase (MMP) family are involved in the breakdown of extracellular matrix in normal physiological processes, such as embryonic development, reproduction, tissue remodeling, and disease processes, such as arthritis or metastasis. Most MMP's are secreted as inactive proproteins which are activated when cleaved by extracellular proteinases. Matrix metalloproteinase 9 (gelatinase B, 92kDa gelatinase, 92kDa type IV collagenase) (MMP9, synonyms: GELB, CLG4B) degrades collagens type IV and V. Studies in rhesus monkeys suggest that MMP9 is involved in IL-8-induced mobilization hematopoietic progenitor cells from bone marrow, and murine studies suggest a role in tumor-associated tissue remodeling. The pro-MMP9 is 92 kDa, and it can be detected a processed form of 68 kDa. This protein can exist as a dimer of 180 kDa (PMID:7492685).

## Publications notables

Autrice	Pubmed ID	Journal	Application
Yu Chen	36240716	Tissue Cell	WB,IHC
Dayun Feng	36179025	Sci Adv	IF
Samana Batool	30274346	Int J Mol Sci	WB

## Stockage

Stockage:

Stocker à -20°C. Stable pendant un an après l'expédition.

Tampon de stockage:

PBS avec azoture de sodium à 0,02 % et glycérol à 50 % pH 7,3

L'aliquotage n'est pas nécessaire pour le stockage à -20C

\*\*\* Les 20ul contiennent 0,1% de BSA.

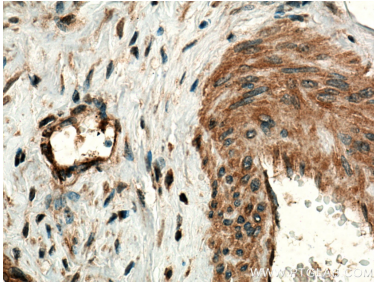
For technical support and original validation data for this product please contact:

T: 1 (888) 4PTGLAB (1-888-478-4522) (toll free in USA), or 1(312) 455-8498 (outside USA)

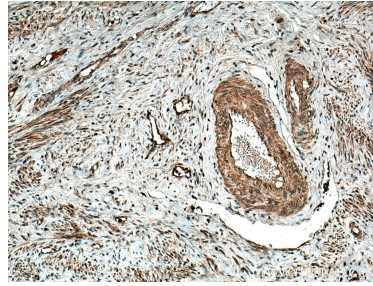
E: proteintech@ptglab.com  
W: ptglab.com

This product is exclusively available under Proteintech Group brand and is not available to purchase from any other manufacturer.

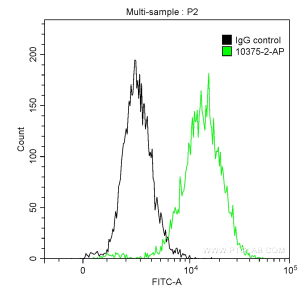
## Données de validation sélectionnées



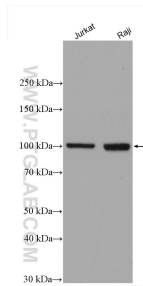
Immunohistochemical analysis of paraffin-embedded human cervical cancer tissue slide using 10375-2-AP (MMP9 (N-terminal) antibody) at dilution of 1:200 (under 40x lens). Heat mediated antigen retrieval with Tris-EDTA buffer (pH 9.0).



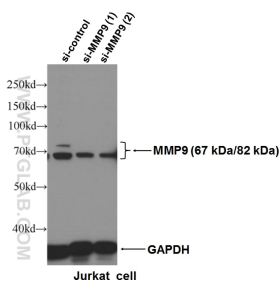
Immunohistochemical analysis of paraffin-embedded human cervical cancer tissue slide using 10375-2-AP (MMP9 (N-terminal) antibody) at dilution of 1:200 (under 10x lens). Heat mediated antigen retrieval with Tris-EDTA buffer (pH 9.0).



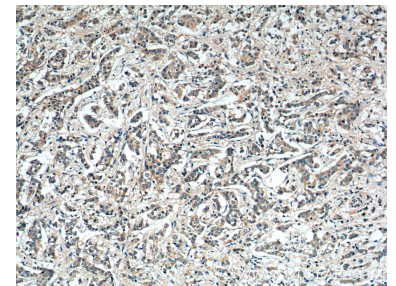
1X10<sup>6</sup> HeLa cells were intracellularly stained with 0.2 ug Anti-Human MMP9 (N-terminal) (10375-2-AP) and CoraLite®488-Conjugated AffiniPure Goat Anti-Rabbit IgG(H+L) at dilution 1:1000 (green), and 0.2 ug Control Antibody. Cells were fixed with 90% MeOH.



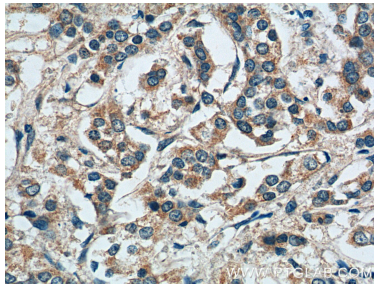
Various lysates were subjected to SDS PAGE followed by western blot with 10375-2-AP (MMP9 (N-terminal) antibody) at dilution of 1:1500 incubated at room temperature for 1.5 hours.



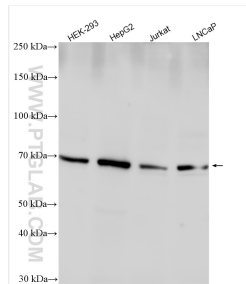
WB result of MMP9 antibody (10375-2-AP, 1:600) with si-control and si-MMP9 transfected Jurkat cells.



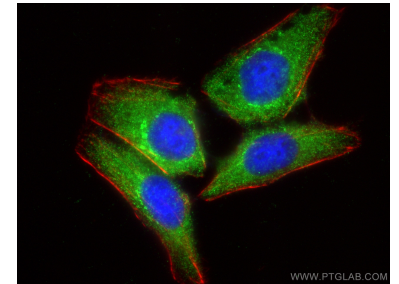
Immunohistochemical analysis of paraffin-embedded human breast cancer tissue slide using 10375-2-AP (MMP9 (N-terminal) antibody) at dilution of 1:200 (under 10x lens).



Immunohistochemical analysis of paraffin-embedded human breast cancer tissue slide using 10375-2-AP (MMP9 (N-terminal) antibody) at dilution of 1:200 (under 40x lens).



Various lysates were subjected to SDS PAGE followed by western blot with 10375-2-AP (MMP9 (N-terminal) antibody) at dilution of 1:1500 incubated at room temperature for 1.5 hours.



Immunofluorescent analysis of (-20°C Ethanol) fixed HepG2 cells using MMP9 (N-terminal) antibody (10375-2-AP) at dilution of 1:400 and CoraLite®488-Conjugated AffiniPure Goat Anti-Rabbit IgG(H+L), CL594-Phalloidin (red).