

À des fins de recherche uniquement

Anticorps Polyclonal de lapin anti-Caspase 9/p35/p10



Numéro de catalogue: 10380-1-AP

Phare

644 Publications

Informations de base

Numéro de catalogue: 10380-1-AP	Numéro d'acquisition GenBank: BC002452	Méthode de purification: Purification par affinité contre l'antigène
Taille: 150ul, Concentration: 500 µg/ml by Nanodrop;	Identification du gène (NCBI): 842	Dilutions recommandées: WB 1:300-1:1000 IP 0.5-4.0 ug for IP and 1:200-1:1000 for WB IHC 1:50-1:200 IF 1:50-1:500
Hôte: Lapin	Nom complet: caspase 9, apoptosis-related cysteine peptidase	
Isotype: IgG	MW calculé: 46 kDa	
Immunogen Catalog Number: AG0404	MW observés: 46 kDa, 30-39 kDa	

Applications

Applications testées:
FC, IF, IHC, IP, WB, ELISA

Demandes citées:
ELISA, IF, IHC, RIP, WB

Spécificité de l'espèce:
Humain, rat, souris

Espèces citées:
bovin, canin, Chèvre, Humain, Lapin, porc, rat, souris, Hamster

Contrôles positifs:

WB : cellules Jurkat, cellules HeLa, cellules HL-60, cellules Jurkat traitées à la staurosporine

IP : cellules HeLa,

IHC : tissu cardiaque humain, tissu pulmonaire de souris

IF : cellules HepG2,

Remarque-IHC: il est suggéré de démasquer l'antigène avec un tampon de TE buffer pH 9,0; (*) A défaut, 'le démasquage de l'antigène peut être 'effectué avec un tampon citrate pH 6,0.

Informations générales

Caspase 9, apoptosis-related cysteine protease (CASP9, synonyms: MCH6, APAF3, APAF-3, ICE-LAP6, CASPASE-9c) is a member of the cysteine-aspartic acid protease (caspase) family. Sequential activation of caspases plays a central role in the execution-phase of cell apoptosis. Caspases exist as inactive proenzymes which undergo proteolytic processing at conserved aspartic residues to produce 2 subunits, large and small, that dimerize to form the active enzyme. Caspase 9 is processed by APAF1; this step is thought to be one of the earliest in the caspase activation cascade. 10380-1-AP can recognize the pre- and cleaved- caspase 9. In recent years, the localization of caspase 9 was a focus of interest. Beside its cytoplasmic distribution, a very extensive localization study was done on rat brain tissue, where caspase 9 was found located predominantly in the nucleus and to a lesser extend in the cytoplasm [PMID: 15541731].

Publications notables

Autrice	Pubmed ID	Journal	Application
Xiao-Feng Zhu	36180975	Phytother Res	WB
Faisal Aziz	26427350	Toxicol In Vitro	WB
Kenan Yildizhan	34583611	J Recept Signal Transduct Res	WB

Stockage

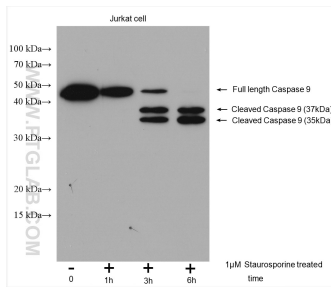
Stockage:
Stocker à -20°C. Stable pendant un an après l'expédition.
Tampon de stockage:
PBS avec azoture de sodium à 0,02 % et glycérol à 50 % pH 7,3
L'aliquotage n'est pas nécessaire pour le stockage à -20C

*** Les 20ul contiennent 0,1% de BSA.

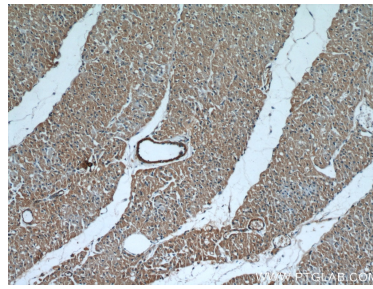
For technical support and original validation data for this product please contact:
T: 1 (888) 4PTGLAB (1-888-478-4522) (toll free in USA), or 1(312) 455-8498 (outside USA)
E: proteintech@ptglab.com
W: ptglab.com

This product is exclusively available under Proteintech Group brand and is not available to purchase from any other manufacturer.

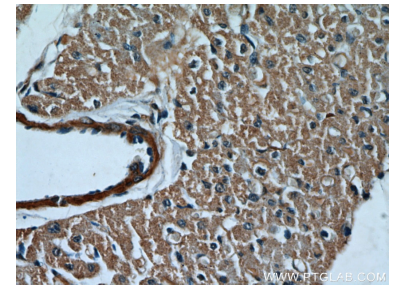
Données de validation sélectionnées



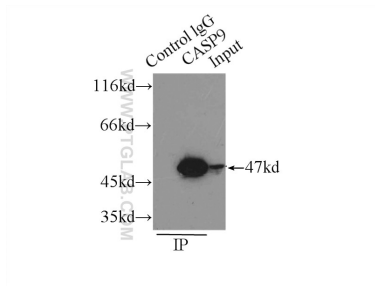
Untreated and Staurosporine treated Jurkat cells were subjected to SDS PAGE followed by western blot with 10380-1-AP (Caspase 9/p35/p10 antibody) at dilution of 1:300 incubated at room temperature for 1.5 hours.



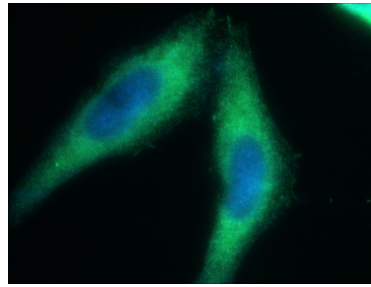
Immunohistochemical analysis of paraffin-embedded human heart tissue slide using 10380-1-AP (Caspase 9/p35/p10 antibody) at dilution of 1:50 (under 10x lens).



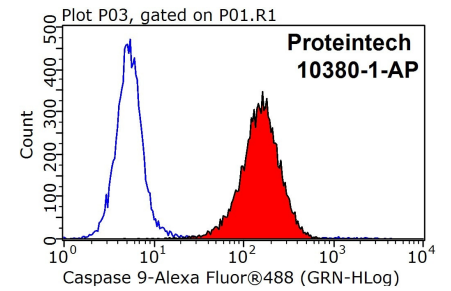
Immunohistochemical analysis of paraffin-embedded human heart tissue slide using 10380-1-AP (Caspase 9/p35/p10 antibody) at dilution of 1:50 (under 40x lens).



IP result of anti-Caspase 9/p35/p10 (IP:10380-1-AP, 3ug; Detection:10380-1-AP 1:200) with HeLa cells lysate 2500 ug.



Immunofluorescent analysis of (-20°C Ethanol) fixed HepG2 cells using 10380-1-AP (Caspase 9/p35/p10 antibody) at dilution of 1:50 and Alexa Fluor 488-conjugated AffiniPure Goat Anti-Rabbit IgG(H+L).



1X10⁶ HepG2 cells were stained with 0.2ug Caspase 9/p35/p10 antibody (10380-1-AP, red) and control antibody (blue). Fixed with 90% MeOH blocked with 3% BSA (30 min). Alexa Fluor 488-conjugated AffiniPure Goat Anti-Rabbit IgG(H+L) with dilution 1:1000.